



Addendum # 2

New Jersey Schools Development Authority
Office of Procurement
32 East Front Street
Trenton, NJ 08625
Phone: 609-858-2986
Fax: 609-656-7238

Date: August 26, 2015

PROJECT #: NT-0014-C03
Garfield James Madison Elementary School
Garfield Public Schools

DESCRIPTION: Addendum # 2

This addendum shall be considered part of the Bid Documents issued in connection with the referenced project. Should information contained in this Addendum conflict with the Bid Documents, this Addendum shall supersede the relevant information in the Bid Documents.

A. CHANGES TO THE PROCUREMENT PROCESS

1. Modifications to the Request for Proposals – Deletion of Identification Requirements and Qualifications for the Safety Coordinator /Inspector and for the Quality Assurance/Quality Control Coordinator/Inspector

BACKGROUND: The Authority has decided to require an improvement in the qualifications for the Safety Coordinator /Inspector position and for the Quality Assurance/Quality Control Coordinator/Inspector position for the Project, including increasing the required years of experience for each position, requiring or requesting relevant certifications, and instituting a prohibition on having one single individual perform both functions (Safety and QA/QC).

Because these changes comes late in the procurement process, and the Bidders may need to adjust their staffing to conform to the new qualifications requirements, the Authority has decided that it **WILL NOT REQUIRE THE IDENTIFICATION OF A SAFETY COORDINATOR AND INSPECTOR OR A QUALITY ASSURANCE/QUALITY CONTROL COORDINATOR/ INSPECTOR** in the Technical Proposal, and will not include the evaluation of such personnel as part of the Evaluation and Scoring Process for this procurement.

Instead, the Authority has chosen to make contractual changes to require the Contractor to employ or otherwise engage a separate individual, meeting the new qualifications requirements

as outlined in this Addendum, for each position, and the contractual requirements for the employment and engagement of individuals meeting the new upgraded qualifications requirements for the Safety and QA/QC positions need not be fulfilled now at the bidding stage, but will be deferred until after award and execution of the contract.

Accordingly, by way of this Addendum: 1) changes are made to the RFP to delete the previous requirements for identification in the Technical Proposal of a Safety Coordinator/Inspector and Quality Assurance/Quality Control Coordinator/Inspector; and 2) changes are made to the General Conditions to require the employment or engagement of persons meeting the increased qualifications requirements set forth in this Addendum at items A.1.a and A.1.b below.

a. **REVISE:** In Section 3.2.B of the RFP (“Required Key Team Members”), numbered paragraph 2, the list of Key Team Members required to be identified in the Technical Proposal shall be modified to delete the positions of Safety Coordinator/Inspector and Quality Assurance/Quality Control Coordinator/Inspector as follows:

- Bidder’s Project Manager;
- Bidder’s Superintendent;
- ~~Bidder’s Safety Coordinator/Inspector;~~
- ~~Bidder’s Quality Assurance/Quality Control Coordinator or Inspector;~~
- Bidder’s Affirmative Action Coordinator.

b. **REVISE:** In Section 3.2.B of the RFP (“Required Key Team Members”), in the NOTE appearing after numbered subsection 2.b (“Superintendent”), delete the reference to the position of Safety Coordinator/Inspector as follows:

NOTE: The Bidder is prohibited from identifying an individual as the Bidder’s **Superintendent** ~~or Safety Coordinator/Inspector~~ if that individual:

- 1) Has been identified as a **Superintendent** ~~or Safety Coordinator/Inspector~~ in response to any other active SDA procurement for which a Notice of Award has not yet been issued as of the date of submission of the Technical Proposal; or
- 2) Is currently performing as a **Superintendent** ~~or Safety Coordinator/Inspector~~ on an existing SDA project that has been awarded to the Bidder, and
 - a. an official Project Schedule for such Project has not yet been accepted and approved by the NJSDA; or
 - b. the date for Final Completion for the awarded Project, included in the official Project Schedule (as accepted and approved by NJSDA) will not occur before construction commences on the Project that is the subject of this procurement and thus the named **Superintendent** ~~and/or Safety Coordinator/Inspector~~ cannot simultaneously perform their duties on the awarded Project as well as the Project that is the subject of this procurement.

c. **DELETE:** In Section 3.2.B of the RFP (“Required Key Team Members”), numbered subsections 2.c and 2.d describing the requirements for the Safety Coordinator/Inspector

and Quality Assurance/Quality Control Coordinator/Inspector, respectively, shall be deleted in their entirety as follows:

~~e. — The Bidder's Safety Coordinator/Inspector is the person identified by the Bidder who performs safety management duties required of the Bidder, and serves as the Authority's point of contact for all matters relating to project safety. The Bidder's Safety Coordinator/Inspector enforces and implements the safety requirements of the Contract, including the Bidder's Safety Plan. The Safety Coordinator/Inspector is on site at all times during building activities, foundations work, trench work and structural steel erection. The Safety Coordinator/Inspector may also perform the duties of the Bidder's Quality Assurance/Quality Control Coordinator/Inspector, provided he/she meets the qualifications of each position. The Safety Coordinator candidate must have completed a 30-Hour OSHA Construction Industry Outreach Training Program, as well as scaffold training, and must have at least four years of construction industry experience.~~

~~d. — The Bidder's Quality Assurance/Quality Control Coordinator/Inspector ("QA/QC Coordinator") is the person identified by the Bidder who shall be responsible for all construction quality issues, and shall perform coordination between the Bidder, subcontractors, and any independent testing labs, and shall have the authority to act for the Bidder in all construction quality control matters. The QA/QC Coordinator shall be on-site at all times during construction to perform construction quality control duties. The QA/QC Coordinator is permitted to serve as the Bidder's Safety Coordinator/Inspector as well. The QA/QC Coordinator shall have a minimum of four years' experience in a similar role.~~

- d. **MODIFY:** In the second sentence of Section 3.10 of the RFP ("Technical Proposal Certification"), delete the reference to Safety Coordinator as follows:

The Bidder further certifies on this form that the ~~individuals~~ **individual** named as Superintendent ~~and Safety Coordinator are~~ **is** or will be available to perform ~~their~~ **the Superintendent's** designated functions on the Project, without any conflict or overlap with other SDA projects.

- e. **REPLACE:** The Bidder's Technical Proposal Certification Form, previously issued with the original bid package, shall be deleted and replaced with a revised Bidder's Technical Proposal Certification Form, dated August 26, 2015, that deletes reference to a named "Safety Coordinator," included as Attachment 2.9 hereto.
- f. **REPLACE:** The "Identification of Bidder's Required Key Team Members" Form, previously issued with the original bid package, shall be deleted and replaced with a revised Identification of Bidder's Required Key Team Members Form, dated August 26, 2015, that deletes reference to a named "Safety Coordinator" and "Quality Assurance/Quality Control" Coordinator, included as Attachment 2.10 hereto.

B. CHANGES TO THE PROJECT MANUAL

NOTE that modifications to the following items will be shown as follows: additions in **bold and underlined** text; deletions in *strikethrough and italics*.

1. **Modifications to the General Conditions regarding Requirements and Qualifications for the CPM Scheduler for the Project**

BACKGROUND: The Authority has decided to require that the Contractor employ or engage a qualified individual (with the following qualifications) that is employed by a firm with DPMC prequalification in the discipline of CPM Scheduling (P030), to act as the “CPM Scheduler” for the Project, to perform the functions and responsibilities detailed in the contract changes described below.

Note that if the Contractor is itself prequalified in the discipline of CPM Scheduling (P030), it may designate one of its own employees as the CPM Scheduler, if that individual meets the qualifications identified below.

- a. **ADD:** Add a new Section 4.12, titled “CPM Scheduler”. to the General Conditions, to establish the requirements and qualifications for the position of “CPM Scheduler”) for the Project as follows:

4.12 CPM Scheduler. The CPM Scheduler shall be the person designated by the Contractor as the preparer and maintainer of all Critical Path Method (“CPM”) schedules for the Project, including the Initial Milestone Schedule and the Construction Schedule for the Project (the “Project Schedule”).

- a. **The CPM Scheduler shall be responsible to prepare the initial schedule submittals in consultation with the Contractor, and will be responsible for preparing all subsequent updates, schedule revisions, schedule proposals, fragnets or other schedule-based submittals on behalf of, and in consultation with, the Contractor. The CPM Scheduler shall be responsible for meeting and consulting with the Contractor and the Authority and its CM in the event of any questions, comments or suggestions raised by the Authority or its CM regarding scheduling, or in the event of any disputes regarding any proposed or approved schedule for the Project, including the Initial Milestone Schedule and the Project Schedule.**
- b. **The CPM Scheduler shall have at least six years of experience in preparation, maintenance and updating of CPM Schedules on projects of similar size, scope and complexity. The CPM Scheduler shall also be experienced and familiar with the Primavera P6 Professional Project Management Scheduling software, version 6.2, or subsequent version, utilized by the Authority for the Project.**
- c. **The CPM Scheduler must be employed by an entity that is DPMC prequalified in the discipline of CPM Scheduling (P030). If the**

Contractor is itself DPMC prequalified in the CPM Scheduling discipline (P030), then the CPM Scheduler may be an employee of the Contractor who has the requisite qualifications to fulfill the position of CPM Scheduler. If the Contractor is not DPMC prequalified in the CPM Scheduling (P030) discipline, the Contractor must engage an entity that has the requisite prequalification and can supply an employee meeting the requisite qualifications to fulfill the position of CPM Scheduler for the Project.

2. **Modifications to the General Conditions regarding Requirements and Qualifications for the Safety Coordinator and Inspector and for the Quality Assurance/Quality Control Coordinator**

BACKGROUND: The Authority has decided to require an improvement in the qualifications for the Safety Coordinator and Inspector position and for the Quality Assurance/Quality Control Coordinator position for the Project, including increasing the required years of experience for each position, requiring or requesting relevant certifications, and instituting a prohibition on having one single individual perform both functions (Safety and QA/QC). These changes are embodied in modifications to the General Conditions, as follows.

- a. **REVISE:** Section 4.5 of the General Conditions (“Quality Assurance /Quality Control Program”), shall be revised as follows to establish the requirements and qualifications for the position of Quality Assurance/Quality Control Coordinator (“QA/QC Coordinator”) for the Project as follows:

4.5 Quality Assurance/Quality Control Program. The Contractor shall have full responsibility for quality assurance and quality control through Final Completion of the Project. The Contractor shall prepare and submit to the Authority a detailed Quality Assurance/ Quality Control (QA/QC) Program at or prior to the Preconstruction Conference. The Construction Manager and the Authority shall review the Contractor’s QA/QC Program and the Authority will either accept or reject the Contractor’s QA/QC Program within fifteen (15) Days of receipt. If the Authority rejects the Contractor’s QA/QC Program, the Contractor shall revise and resubmit the QA/QC Program to the Authority until it is accepted. Once the QA/QC Program is accepted, the Authority shall monitor the Contractor’s compliance with the Program to ensure that the Work meets or exceeds the accepted QA/QC Program. As part of the Contractor’s QA/QC Program, the Contractor shall designate one (1) full-time employee whose responsibility it is to maintain and monitor the Contractor’s compliance with its accepted QA/QC Program **(the “QA/QC Coordinator,” who shall have the responsibilities and qualifications listed in section 4.5.1 below.** If the Contractor’s Work fails to meet the accepted QA/QC Program, the Authority will implement a course of action to address the Contractor’s failure to comply with its QA/QC Program. The Authority’s actions to verify the Contractor’s compliance with its QA/QC Program shall not relieve the Contractor of its obligation to establish a QA/QC Program, comply with the QA/QC Program or meet the requirements of the Contract Documents. The Contractor’s failure to comply with the requirements of this Section 4.5 shall be deemed an Event of Default under this Agreement. Such Event of Default may trigger Default remedies as stated in Section 11.

4.5.1 The Contractor's Quality Assurance/Quality Control Coordinator/Inspector ("QA/QC Coordinator") is the person identified by the Contractor who shall be responsible for all construction quality issues, and shall perform coordination between the Contractor, subcontractors, and any independent testing labs, and shall have the authority to act for the Contractor in all construction quality control matters. The QA/QC Coordinator shall be present on the Project Site at all times whenever Work is being performed, to perform construction quality control duties. The QA/QC Coordinator shall only perform construction quality control duties for the Project and shall not perform Construction Work, or clerical/ administrative work unrelated to QA/QC Coordinator duties, or perform additional roles or functions on the Project (e.g., Superintendent, Safety Coordinator and Inspector, etc). The QA/QC Coordinator shall have the following qualifications:

- a. A bachelor's degree in Construction Management, Construction Engineering or a related field; and**
- b. Knowledge of current construction practices; and**
- c. Five years of experience as a Quality Control professional.**
- d. Additionally, the candidate's credentialing as a Certified Manager of Quality/ Organizational Excellence by the American Society for Quality, or other related Quality Management certification (e.g., US Army Corps of Engineers/ Naval Facilities Engineering Command (NAVFAC) COM-C certification, or similar), is preferred, but not mandatory.**

- b. **REVISE/ADD:** Section 4.7 of the General Conditions ("Safety Program"), shall be renamed as "Safety Program and Safety Coordinator and Inspector, and shall be revised to add the following Subsection 4.7.1, captioned "Safety Coordinator and Inspector," establishing the requirements for the position of Safety Coordinator and Inspector for the Project, as follows:

4.7.1 Safety Coordinator and Inspector. The Contractor shall employ or engage a qualified individual as Contractor's Safety Coordinator and Inspector for the Project. The Safety Coordinator and Inspector is the person identified by the Contractor who performs safety management duties required of the Contractor and serves as the Authority's point of contact for all matters relating to project safety. The Contractor's Safety Coordinator and Inspector enforces and implements the safety requirements of the Contract, including the Contractor's Safety Plan, and inspects the Work to ensure compliance with 1) OSHA regulations and guidelines; 2) the NJSDA Safety Manual; and 3) all applicable laws and regulations. The Safety Coordinator and Inspector shall be present on the Project Site whenever Work is

being performed. The Safety Coordinator and Inspector shall only perform safety management duties for the Project and shall not perform Construction Work, or clerical/ administrative work unrelated to Safety Coordinator and Inspector duties, or perform additional roles or functions on the Project (e.g., Superintendent, Quality Assurance/ Quality Control Coordinator, etc.) The Safety Coordinator and Inspector shall have the following qualifications:

- a. A bachelor's degree in Safety and Health Management or other related field; and
- b. Five years of experience working as a safety professional; and
- c. Completion of 30-Hour OSHA Construction Outreach Training; and
- d. Completion of 24-Hour HAZWOPER training; and
- e. Certification as a Construction Health and Safety Technician;

1. Volume 1, Other Modifications to General Conditions

- a. **ADD:** Add the following definition of "OCIP Manual" in the appropriate alphabetical order in Article 1 of the General Conditions:

"OCIP Manual" means the NJSDA's OCIP III Insurance Procedures and Enrollment Manual included in the Project Manual.

- b. **ADD:** Add the following definition of "Risk Management Unit or RMU" in the appropriate alphabetical order in Article 1 of the General Conditions:

"Risk Management Unit" or "RMU" means the Authority's Risk Management Unit, which, together with the Authority's OCIP Administration Services Provider is also responsible for management of OCIP enrollment and other OCIP-related issues.

- c. **MODIFY:** The durations listed in Subsections D and E of Section 5.2.1 ("Specific Durations" shall be modified as follows:

D. Substantial Completion: To be achieved within ~~737~~ 637 calendar days from date of Construction Notice to Proceed.

E. Final Completion: To be achieved within 90 calendar days from date of Substantial Completion (727 days from date of Construction Notice to Proceed).

- d. **MODIFY:** The third sentence of Section 9.2.1 ("Owner Controlled Insurance Program Coverage") shall be modified as follows:

9.2.1 Owner Controlled Insurance Program Coverage.

. . . . In addition, the Contractor and its subcontractors shall be required to comply with all provisions of the applicable Project Safety Manual **and the OCIP Manual**, as such compliance has a direct bearing on the insurance costs of the Authority.

- e. **MODIFY:** Section 9.2.3 (“OCIP Management”) shall be renamed and modified as follows:

9.2.3 ~~OCIP Management~~ **Risk Management Unit**. Management of OCIP enrollment and other OCIP-related issues shall be handled by the Authority’s **Risk Management Unit and** OCIP Administration Services Provider ~~in conjunction with the Authority’s Risk Management Unit (“RMU”)~~ (collectively, ~~“OCIP Management”~~ **“RMU”**). All OCIP questions are to be directed to ~~OCIP Management~~ the RMU.

- f. **MODIFY:** Section 9.2.4 (“Mandatory Enrollment”) shall be modified as follows:

9.2.4 Mandatory Enrollment. **Prior to undertaking any work, Enrollment enrollment** in the OCIP is mandatory for all eligible subcontractors, but not automatic. The Contractor shall be required to notify ~~OCIP Management~~ **RMU** of all subcontractors of every tier providing direct labor on the Project and follow enrollment procedures as provided by the Authority in the NJSDA OCIP Insurance Procedures **and Enrollment** Manual (the “OCIP Manual”). Any failure on the part of the Contractor to comply with this notification and enrollment requirement may negate coverage under the OCIP, and the Contractor shall bear all risk, financial and otherwise, associated with any such lack of coverage.

- g. **MODIFY:** Section 9.2.5.3 (“Warranty Work Exclusion”) shall be modified as follows:

9.2.5.3 Warranty Work Exclusion. The Contractor and any subcontractor of any tier shall be ineligible for participation in the OCIP and thus shall be responsible for purchasing and maintaining its own insurance coverage in accordance with Section 9.3.2 below for the performance, after Final Completion of the Project, as such is defined herein, of any warranty Work on the Project pursuant to ~~Article~~ **Section** 19 and in no event shall such **warranty** Work be subject to coverage under the OCIP.

- h. **MODIFY:** The last sentence of Section 9.2.6.2 (“Right to Terminate Enrollment”) shall be modified as follows:

. . . . Notwithstanding anything to the contrary, in the event this Contract is wholly ~~terminated~~ **Terminated** for ~~convenience~~ **Convenience** or for **Cause**

~~cause~~—pursuant to ~~Article~~ **Section** 11, OCIP coverage shall terminate as set forth in the ~~Order~~ **Notice** of Termination for Convenience or ~~Order~~ **Notice** for Termination for Cause, as ~~the case may be~~ appropriate.

- i. **MODIFY:** Section 9.2.8 (“No Release”) within Section 9.2 (“Contractor/ Subcontractor Insurance and Authority’s Owner Controlled Insurance Program Coverage”) shall be modified as follows:

9.2.8 No Release. The provision of the OCIP by the Authority shall in no way be interpreted as relieving the Contractor of any other responsibility or liability under the Contract Documents or any applicable law, statute, regulation, or court order, including, but not limited to, the risk of loss and indemnification obligations under ~~Article~~ **Section** 16.

- j. **MODIFY:** Section 9.2.9 (“OCIP Provided Coverage”) within Section 9.2 (“Contractor/ Subcontractor Insurance and Authority’s Owner Controlled Insurance Program Coverage”) shall be modified as follows:

9.2.9 OCIP Provided Coverage. The terms and conditions of such policies or programs, as such policies or programs may be from time to time amended, are incorporated by reference. By entering this Agreement, the Contractor agrees to be bound by the terms of coverage as contained in such insurance policies, and Contractor agrees to require its subcontractors to be similarly bound by the terms of coverage as contained in such insurance policies. The terms of coverage of OCIP insurance policies or programs are set forth below.

- k. **MODIFY:** Section 9.2.9.2 within Section 9.2.9 (“OCIP Provided Coverage”) shall be modified as follows:

9.2.9.2 Commercial General Liability Insurance shall be provided on an “occurrence” form under a master liability policy. Certificates of Insurance will be provided to the Contractor and all tiers of Subcontractors reflecting the following Limits of Liability:

\$2,000,000 Bodily Injury and Property Damage Liability
Combined Single Limit each ~~Occurrence~~ occurrence (~~per region~~ reinstated annually)

~~\$5,000,000~~ 4,000,000 General Aggregate Limit (~~per Region~~ each designated location) reinstated annually

~~\$5,000,000~~ 4,000,000 Products/Completed Operations Aggregate (~~per Region~~ reinstated annually)

\$2,000,000 Personal Injury and Advertising Injury

\$ 300,000 Damage to Premises Rented to You (Fire, Explosion, ~~Smoke, Water Damage and Sprinkler Leakage~~ Lightning, Legal Liability)

\$ 10,000 Medical Expense (any one person)

l. **MODIFY:** Section 9.2.9.3 within Section 9.2.9 (“OCIP Provided Coverage”) shall be modified as follows:

9.2.9.3 Commercial General Liability Insurance coverage and terms shall include, but shall not be limited to, the following:

- a) Occurrence Basis;
- b) Products
- c) Completed Operations Extension (ten-year term after Project Final Completion ~~or the statute of repose, whichever is less~~)
- d) Contractual Liability – including all railroads;
- e) Independent Contractor’s Liability;
- f) Personal Injury;
- g) Explosion, Collapse, and Underground (X,C,U) ~~exclusions deleted~~; and
- h) Designated ~~Premises~~ Construction Projects Only.

m. **MODIFY:** Section 9.2.9.3 within Section 9.2.9 (“OCIP Provided Coverage”) shall be modified as follows:

9.2.9.4 Excess Liability Insurance shall be provided under a master excess liability policy. Certificates of Insurance will be provided to the Contractor and all tiers of Subcontractors reflecting the following Limits of Liability:

\$200,000,000	Per Occurrence
\$200,000,000	Aggregate

n. **MODIFY:** Section 9.2.9.5(a) (“All Risk Coverage”) within Section 9.2.9.5 (“Builder’s Risk Coverage”) shall be modified as follows:

- (a) All Risk Coverage. Builder’s Risk shall provide “All Risk” coverage on a replacement cost basis subject to standard exclusions, property limitations and conditions. Such insurance shall include the interests of the Authority, the Contractor, and any enrolled Subcontractor of any tier providing direct labor on the Project, with the following terms:

Primary Limit: \$~~200,000,000~~150,000,000
Sublimits:
Transit: \$5,000,000 any one conveyance
Offsite Storage: \$5,000,000 any one location

- o. **MODIFY:** Section 9.2.11.1 within Section 9.2.11.1 (“Contractor and Subcontractor OCIP Responsibilities”) shall be modified as follows:

9.2.11.1 Ensuring that no enrolled subcontractor shall commence Work at the Project Site until it has received prior **Subcontractor** approval from the ~~RMU~~ **Authority as set forth in Section 7.2 of these General Conditions.**

- p. **MODIFY:** The third sentence of Section 9.2.12 (“Supplemental Insurance Requirements of Contractor and Eligible Subcontractors”) shall be modified as follows:

9.2.12 Supplemental Insurance Requirements of Contractor and Eligible Subcontractors.

. . . . Such coverage must be purchased and maintained from insurance companies authorized to transact the business of insurance in the State of New Jersey and are rated ~~“A-VII”~~ **“A-VIII”** or better by A.M. Best Company.

- q. **MODIFY:** Section 9.2.12.1 (“Pollution Liability”) shall be modified as follows:

9.2.12.1 Pollution Liability: In the event that the Contractor’s and Subcontractor’s efforts involve Pollution Liability exposure (including asbestos **work**, ~~and~~ lead work, **or** hazardous material abatement, transportation and/or disposal), the Contractor ~~is~~ **and/or its subcontractors are** required to maintain, or cause to be maintained, Pollution Liability insurance and, if necessary, Commercial Umbrella Insurance, with minimum limits of \$5,000,000 per occurrence and \$5,000,000 aggregate which protects the insureds from any and all claims that may arise out of or in consequence of any service or Work performed on this Project. If the Contractor performs Work and also utilizes the efforts of Subcontractors, insurance coverage must extend to them. **Where the Contractor and/or its subcontractors are solely consultants, insurance coverage may be as an endorsement to a professional liability policy, or it may be a separate Pollution Liability policy.**

- r. **MODIFY:** The first sentence of Section 9.2.12.4 (“Off-Site Commercial General Liability”) shall be modified as follows:

9.2.12.4 Off-Site Commercial General Liability: Commercial General Liability insurance, written as broad as the standard coverage form currently in use in the State of New Jersey **as of the effective date of this Agreement.**

- s. **DELETE:** Section 9.2.12.6 (“Additional Insureds”) shall be deleted in its entirety, and replaced with a notation that “THIS SECTION IS INTENTIONALLY OMITTED” as follows:

~~9.2.12.6 *Additional Insureds.* All insurance policies required under this Section 9.2.12, exclusive of Workers’ Compensation, Automobile and Contractor’s Equipment, shall name the Authority, EDA, the State, the CM, the Design Consultant, the Project School District and their respective officers, employees and agents as Additional Insureds. This insurance shall apply as primary insurance with respect to any other insurance or self-insurance programs afforded to the Authority. In addition, the Contractor may be required to name other parties as Additional Insureds prior to the initiation of such work, and shall comply with all laws, ordinances, rules and regulations of Federal, State, county and municipal authorities in the performance of said Work. **THIS SECTION IS INTENTIONALLY OMITTED.**~~

- t. **MODIFY:** The list of Ineligible Subcontractors/Subconsultants contained in Section 9.3 (“Subcontractors Ineligible for OCIP”) shall be modified as follows:

- a) Professional Services Consultants;
- b) Suppliers (that do not perform or subcontract installation);
- c) Vendors;
- d) Guard & security services;
- e) Janitorial services;
- f) Truckers/**Haulers** (including trucking to the ~~Schools Facilities~~ Project Site where delivery or removal of materials is the only scope of work performed);
- g) ~~Other temporary project services~~ **Any contractor or other person or organization that does not have dedicated payroll for employees at the “project site” for the “designated project”;**
- h) ~~Demolition~~ **Blasting Contractors (unless approved in writing by the RMU;**
- i) Lead, asbestos, & hazardous materials abatement;
- j) Off-site fabricators **or manufacturers;** and
- k) Material Dealers

- u. **MODIFY:** Section 9.3.1 (“Insurance Requirements of Ineligible Subcontractors”) shall be modified as follows:

9.3.1 Insurance Requirements of Ineligible Subcontractors. Unless otherwise directed by the Authority, the Contractor shall require all Ineligible Subcontractors to purchase and maintain at their own expense the insurance coverages set forth below. Prior to permitting an Ineligible Subcontractor to

perform any Work, the Contractor must furnish ~~the OCIP Manager~~ **RMU** with certificates of insurance together with declaration pages, in a form satisfactory to the Authority, showing that the Ineligible Subcontractors have complied with this Section 9.3. Insurance binders are not acceptable as proof of insurance coverage. Such coverage must be purchased and maintained from insurance companies authorized to transact the business of insurance in the State of New Jersey and are rated "A-VIII" or better by A.M. Best Company. In each policy, the Contractor shall have incorporated a provision, in accordance with the laws of New Jersey, requiring written notice to the Authority at least thirty (30) Days prior to cancellation or non-renewal of any insurance coverage required under this Section. The Contractor warrants that if the insurer, or coverage, is not subject to the provisions requiring thirty (30) Day prior notification or cancellation or non-renewal, it will, in any event, provide notice to the Authority immediately upon receipt of any cancellation or non-renewal of any insurance coverage required under this Section. The Contractor warrants that its insurance carriers are accurately informed regarding business activities of the Contractor and intend to insure those business exposures.

- v. **MODIFY:** The first sentence of Section 9.3.2 within Section 9.3 ("Subcontractors Ineligible for OCIP") shall be modified as follows:

9.3.2 The coverages enumerated below shall protect the Contractor, the Authority, the **NJEDA**, the New Jersey Department of Education, the State, the Construction Manager, the Design Consultant, and the *Client* **Project** School District, and their respective directors, officers, members, employees and agents, against claims of, or relating to, personal and bodily injury (including death) to persons or damage to property which may arise from, or in connection with, the performance of the Work (whether performed On-site or Off-site) by the Ineligible Subcontractor, its employees, officers, agents, subcontractors or other individuals or entities for whom the Ineligible Subcontractor may be contractually or legally responsible while performing Work.

- w. **ADD:** Add the following sentence to the end of Section 9.3.2.2 ("Pollution Liability") as follows:

9.3.2.2 Pollution Liability. In the event that the Subcontractors' efforts involve a Pollution Liability exposure (including asbestos work, lead work or hazardous material abatement, transportation and/or disposal), the Contractor is required to maintain, or cause to be maintained, Pollution Liability insurance and, if necessary, Commercial Umbrella Insurance, with minimum limits of \$5,000,000 per occurrence and \$5,000,000 aggregate which protects the insureds from any and all claims that may arise out of or as a consequence of any Work performed on this Project. If the Contractor performs Work and also utilizes the efforts of Subcontractors, insurance coverage must extend to them. Where the ineligible subcontractors are solely consultants,

insurance coverage may be as an endorsement to a professional liability policy, or it may be a separate Pollution Liability policy.

- x. **MODIFY:** Section 9.3.2.6 (“Endorsement and Waivers”) shall be modified as follows:

9.3.2.6 Endorsement and Waivers. The Commercial General Liability Policy, Automobile Liability Policy, Pollution Liability and Excess/Umbrella Policies required to be provided by the Ineligible Subcontractors shall contain or be endorsed to contain the following provisions.

- (a) The Contractor, the Authority, **the NJEDA, DOE the New Jersey Department of Education**, the State, the ~~CM~~ Construction Manager, the Design Consultant and the Project School District, and their respective directors, officers, members, employees and agents shall be covered as additional insureds **for ongoing and completed operations.**
- (b) For any claims related to the Project, the Ineligible Subcontractors’ insurance coverage shall be primary insurance with respect to the Contractor, the Authority, **the NJEDA, DOE the New Jersey Department of Education**, the State, the ~~CM~~ Construction Manager, the Design Consultant, and the Project School District, and their respective directors, officers, members, employees and agents and the Contractor warrants that coverage shall be required to continue for a minimum of two years notwithstanding the fact that the Ineligible Subcontractor has departed from the School Facilities Project site. Any insurance or self-insurance maintained by the Authority, the State or the Project School District, and their respective directors, officers, members, employees and agents, shall be excess of the Ineligible Subcontractors’ insurance, and shall not contribute with it.
- (c) Any failure on the part of the Ineligible Subcontractors to comply with reporting provisions or other conditions of the policies, any breach of warranty, any action or inaction of the Ineligible Subcontractors or others, any foreclosure related to the Project or any change in ownership of all or any portion of the Project shall not affect coverage provided to the Contractor, the Authority, **the NJEDA, DOE the New Jersey Department of Education**, the State, the Construction Manager, the Design Consultant, the Project School District ~~the Project Management Firm or Construction Manager~~ and their respective directors, officers, members, employees and agents.
- (d) The Ineligible Subcontractors’ insurance shall apply separately to each insured against whom a claim is made or suit is brought, except with respect to the limits of the insurer’s liability.

y. **MODIFY:** Section 13.3.5 within Section 13.3 (“Invoices”) shall be modified as follows:

13.3.5 Invoices may request payment for equipment and materials not yet incorporated into the Project, provided that (i) the Authority’s Representative is satisfied that the equipment and materials are suitably stored at either the Site or another acceptable location, (ii) the equipment and materials are protected by suitable insurance **(if stored equipment and materials are of a total value in excess of OCIP Builder's Risk coverage per Section 9.2.9.5 above (currently \$5 million limit for any one location)** and (iii) upon payment, the Authority will receive the equipment free and clear of all liens and encumbrances.

z. **REVISE:** Section 16.2 of the General Conditions (“Indemnification”), shall be revised as follows:

16.2 Indemnification

16.2.1 To the fullest extent permitted by law, the Contractor shall indemnify, protect, defend and save harmless the State of New Jersey, the Authority, the Construction Manager, the Design Consultant and the Project School District, as well as their respective agents, servants, officers, directors and employees, ~~from and against any loss, damage, injury, cost or expense including interest, attorney’s fees and other expenses, and~~ from and against any claim, demand, liability, lawsuit, judgment, action or other proceeding **including, but not limited to, all costs, fees and expenses, including, without limitation, attorney’s fees, and expenses, court costs, expert witness fees and expenses, any resulting settlement, judgment award or other assessment of liability, interest and any other expenses, arising out of or resulting** from, ~~in connection with, or as a result of~~ any of the following:

16.2.1.1 the negligent acts or omissions of the Contractor, its agents, servants, officers, employees, Subcontractors or any other person acting at the Contractor’s request, subject to its direction, or on its behalf, **regardless of whether caused in part by the negligent act or omission of a party indemnified hereunder, provided it is not caused by the sole negligence of a party indemnified hereunder;**

16.2.1.2 the loss of life or property, **including the Work itself,** or injury or damage to the person, body or property, **including the Work itself,** of any person or persons whatsoever, that arises or results directly or indirectly from the negligent acts or omissions by the Contractor, its agents, servants, officers, employees, Subcontractors or any other person acting at the Contractor’s request, subject to its direction, or on its behalf, **regardless of whether**

caused in part by the negligent act or omission of a party indemnified hereunder, provided it is not caused by the sole negligence of a party indemnified hereunder;

~~16.2.1.3 any gross negligence, default, or breach, of the Contractor, its agents, servants, officers, employees, Subcontractors or any other person acting at the Contractor's request, subject to its direction, or on its behalf~~

~~16.2.1.4~~ **16.2.1.3** violation of or non-compliance with Federal, State, local and municipal laws and regulations, ordinances, building codes (including without limitation the Americans with Disabilities Act) arising from the performance or non-performance of, or arising out of conditions created or caused to be created by the Contractor, its agents, servants, officers, employees, Subcontractors or any other person acting at the Contractor's request, subject to its direction, or on its behalf, regardless of whether caused in part by the negligent act or omission of a party indemnified hereunder, provided it is not caused by the sole negligence of a party indemnified hereunder.

- aa. **REPLACE:** Section 08700, ("Finish Hardware") as originally issued with the Bid Documents, shall be deleted in its entirety and replaced with revised Section 08700, ("Finish Hardware") dated August 25, 2015, included in this Addendum as Attachment 2.8.

C. CHANGES TO THE DRAWINGS:

1. **ADD:** Sketch AD1-SK1, inadvertently omitted from Addendum 1, is included with this Addendum as Attachment 2.6.
2. **MODIFY:** In Drawing SW-107 ("Soil Erosion and Sediment Control Plan") the Notes regarding "Safety Barrier or Sidewalk Closure" shall be changed from "~~SAFETY BARRIER OR SIDEWALK CLOSURE (SEE LEGEND)~~", to read "SAFETY BARRIER (SEE LEGEND AND NOTES ON SW-101)". All other plans, sections and elevations are modified accordingly by implication.

3. **MODIFY:** In Drawing SW-107 ("Soil Erosion and Sediment Control Plan") the Notes regarding "Covered Walkway or Sidewalk Closure" shall be changed from "~~COVERED WALKWAY OR SIDEWALK CLOSURE (SEE LEGEND)~~", to read "COVERED WALKWAY (SEE LEGEND AND NOTES ON SW-101)". All other plans, sections and elevations are modified accordingly by implication.
4. **MODIFY:** In Drawing A-403, ("Room Layouts-Media Center, Office, Computer Classroom"), change the MEDIA CENTER Projection Screen Size from "~~8' x 8'~~ to 72 1/2' x 116'". All other plans, sections and elevations are modified accordingly by implication.

D. BIDDER'S QUESTIONS AND NJSDA RESPONSES:

1. Question: Leeds requirement: Please confirm or deny if this is the requirement for this project. GC-24 /6.5 mentioned NOT APPLICABLE. Few Specs requires Leeds submittals for obtaining of Credit like ... 1.3F-09290-2, 1.4F -09300-2, 1.4G - 09510-2 , 1.3F - Page 09900-3,1.5G -Page 10100-3,ETC.ETC
 Answer: LEED Certification is not required for this Project.
2. Question: Builder risk Insurance: Specs ref 9.2.9.5 /GC-57: Primary limit mentioned as \$ 200 Million. Please clarify.
 Answer: Refer to Item B.1.n above, identifying modifications to the General Conditions changing primary Builder's Risk limit to \$150 million any one occurrence per project.
3. Question: Builder risk Insurance: Specs ref 9.2.9.5 /GC-57: Is it included under OCIP or exclusively to be included by GC?
 Answer: Per Section 9.2.1 of the General Conditions, Builder's Risk is part of the OCIP program.
4. Question: Excess liability insurance: Specs ref. 9.2.9.4 /GC -57: per Occurrence & aggregate amount mentioned as \$ 200 Million. Please clarify.
 Answer: The OCIP program has Umbrella/Excess liability insurance of \$200 million per occurrence, and in the aggregate, for the duration of the project, and ten years of completed operations coverage.
5. Question: Excess liability insurance: Specs ref. 9.2.9.4 /GC -57: Is it included under OCIP or exclusively to be included by GC?
 Answer: Per Section 9.2.1 of the General Conditions, Umbrella/Excess insurance is part of the OCIP program.

6. Question: Please confirm the plan review status of the township.

Answer: SDA projects, as projects of a state entity, are not subject to municipal plan review. That said, in accordance with DOE regulations, the Schematic Design documents were submitted to the Planning Board pursuant to N.J.A.C. 6A:26. Accordingly, SDA has performed its obligations with respect to the Planning Board submission and no further action or approval by the Planning Board is required or anticipated.

7. Question: Please clarify on approx. date of Award and date of proceed. ref 5.2 / GC-17.

Answer: The anticipated award date for this contract is October 29, 2015, the anticipated date for the Constructability Notice to Proceed is November 19, 2015, and the anticipated date for issuance of the Construction Notice to Proceed is May 26, 2016, but these dates are subject to change at the NJSDA's discretion.

8. Question: Is the payment of Building Permit fees waived by local authority?

Answer: The Building Permit for this project is issued by the DCA, not a local authority.

Refer to Section 3.5 of the General Conditions, which specifies that SDA will:
“pay for the New Jersey Uniform Construction Code building permit, and assist the Contractor in obtaining this permit, which the Contractor shall be responsible to apply for and obtain. The Authority shall not be responsible for obtaining or paying for any other permits, licenses, approvals, government charges or inspection fees required by any governmental or quasi-governmental Authority Having Jurisdiction over the Project except that the Authority, through an Allowance to the Construction Manager, shall be responsible to pay the fees for special inspectors for the Project.”

See also Section 4.11 of the General Conditions (“Permits”) which provides:
“Except as explicitly identified in Section 3.5, the Contractor shall obtain and pay for all permits, fees, approvals, licenses, government charges and inspection fees necessary for the proper execution and completion of the Work and/or required for the Project by any government or quasi-government Authority Having Jurisdiction over the Project, including, but not limited to, soils erosion permits, construction trailer permits, water permits, utility permits and street opening permits”

9. Question: Please provide the Geo tech report.

Answer: The Geotechnical Report, dated 10/31/13, was provided as Attachment 2 to Addendum No. 1. Additionally, that Addendum also provided, as Attachment 1, a “Final Subsurface Investigation and Foundation Recommendations” report, dated 09/08/03.

10. Question: There are 2 Spec Sections for Flagpoles. Sec 02840 Aluminum Flagpole & Sec

10350 Flagpoles. Which applies?

Answer: Section 10350 was deleted in its entirety by Addendum No. 1.

11. Question: Drawing E-221 Note 17 states provide four (4) 4" conduits from the pull box. Drawing E-211 Note 24 states provide 4, 4" sleeves. Do the four (4) 4" conduits stop at the sleeve location?

Answer: There are two (2) 4" conduits for electrical service connection and two (2) additional 4" conduits for telecom. The conduits route from the pole to the building is as shown on the drawing SW-102. The conduits are routed from the pole to the building, through the foundation wall, up the masonry chase and to the pullbox which is located above the gymnasium ceiling.

12. Question: Drawing T-101 Note 4 states provide four (4) 4" conduits from the third floor MDF to the property line. Please clarify the location where the conduits end.

Answer: The four (4) 4" conduits shown on drawing T-101 shall be reduced to two (2) 4" conduits. The routing is shown on the drawing E-211, E-221 and site plan SW-105. These conduits are the same (2) telecom conduits mentioned in the answer above to question 1. The two (2) conduits are routed from the pullbox at the gymnasium ceiling up to the Third Floor MDF Room.

13. Question: Provide missing sketch AD1-SK1 from addendum # 1 for above reference project.

Answer: Sketch AD1-SK1, inadvertently omitted from Addendum 1, is included with this Addendum 2 as Attachment 2.6.

14. Question: The play Structure does not meet ADA Laws as suggested by one of the supplier. Please clarify or provide with other specs.

Answer: Provide and install Transfer Platform with Guiderail, part # 19285 and attach to the hexagon between equipment #12223 and #19104 as indicated on drawing AD2-A01, attached to this Addendum.

15. Question: Please clarify: Case work: Drg A-508, details A2 and A3 shows wall cabinets w/ EB – Exhibition Board on front doors. Refer specs section 2.3/10100-5. Seems not feasible, as door thickness (3/4") and material (cork wrapped in vinyl covering) does not go for Cabinets doors.

Answer: Exhibition boards shown on Drawing A-508 are to be mounted to the wood cabinet doors.

16. Question: Please confirm that the steel receiving spray fireproofing will remain unprimed.

Answer: Correct.

17. Question: Please confirm that floor slabs will be normal weight concrete.
- Answer: Correct.
18. Question: Please confirm that all fireproofing and intumescent fireproofing will have a 2 hour rating.
- Answer: Incorrect statement. Fire ratings are as indicated on the construction documents.
19. Question: Please confirm that all columns marked 'FP' will receive intumescent fireproofing.
- Answer: Incorrect statement. "FP" indicates which structural member(s) which receive fireproofing. There are areas on the Structural Steel drawings where spray fireproofing is indicated. The Architectural drawing (Plan Details and Wall Sections) indicate which structural steel members receive spray-fireproofing and intumescent paint.
20. Question: Please confirm that gymnasium columns U16, 21, 25, 28, S28, P28, N28, L28 & L10 will all receive intumescent fireproofing.
- Answer: Incorrect statement. Some of the above references are within masonry walls and do not receive fire-proofing; some column references have no fire-rating and some receive intumescent fireproofing. Refer to the Architectural drawing (Plan Details and Wall Sections) for additional information.
21. Question: Please confirm that all beams and Truss A will receive spray fireproofing.
- Answer: Incorrect statement. There are areas on the Structural Steel drawings where spray fireproofing is indicated. The Architectural drawing (Plan Details and Wall Sections) indicate which structural steel members receive spray-fireproofing and intumescent paint. Refer to the Architectural drawing (Plan Details and Wall Sections) for additional information.
22. Question: Please confirm [that one] on site full time Quality Control Manager [is required] for this project.
- Answer: Confirmed. Refer to General Conditions, Section 4.5 "Quality Assurance / Quality Control Program."
23. Question: As per the specification please confirm one security guard (is) require(d) at all times for this project when the contractor is not on site.
- Answer: Confirmed. Refer to General Conditions, Section 6.18.2 "Security."

24A. Question: There are 21 rooms in drawings (104,106,138,203,204,209, 211,323,322,311,309,308,306,305,221,223,326,316,314,321,319) Please confirm the number of these rooms.

Answer: The number of Classrooms are as indicated in the Contract Document drawings.

24B. Question: Regarding Music Class Room: It is mentioned that the required ceiling speakers are for type A only so what about type B since it shown ceiling speakers in type B as per drawings? Please advise.

Answer: Ceiling Loudspeakers used in Type-A classrooms and Type-B classrooms should be the same. See the Specification: 2.3, A 'Kindergarten, 1st-5th Grade, Computer, Art and SGI Class Rooms, A/V SYSTEM EQUIPMENT LIST,' item number 14 for the speaker types to be used.

25A. Question: Regarding Music Class Room: There are some items shown in drawings but not listed in BoQ. For example:

1. CRP Plate
2. SRP Plate
3. Unbalanced to balanced converter

Please advise.

Answer: Items 'CRP' and 'SRP' are custom input plates, and are listed in the specification - Music Classroom A/V SYSTEMS EQUIPMENT LIST item #32. They are further detailed in the drawing set on drawing AV-702, details F. (3.) An Extron BUC 102 (part # 60-1370-01) should be used for the Unbalanced to Balanced converter.

25B. Question: For item no.11, IPCP 305 is wrong part number and we think that 60-1071-02 is the correct one. Please confirm.

Answer: The part originally specified for Music Class Room Item #11 is no longer being manufactured. The direct replacement for this part: Extron IPCP 505 has a part number of 60-1071-02.

26. Question: Regarding Media Center: The model number of projection screen (21814LS) is for 72 1/2" x 116" screen but the description in equipment list is 87"x139". Please clarify which one is required?

Answer: For the Media Center, a screen with the size of 72½" x 116" should be used. See Item C.4 above, for modification of the Drawings to reflect the correct size of the projection screen.

27. Question: Please advise the anticipated award date from the bid submission date.

Answer: See Response to Question 7, above.

28. Question: Please confirm that all the field testing will be done by an agency hired and paid by the owner.

Answer: All field testing will be the responsibility of the Contractor, except such testing that supports or is required for special inspections, or any testing specifically requested by the Authority. See Section 6.12.1 of the General Conditions, which specifies that:

“[t]he Contractor shall bear the cost of material and equipment testing specifically required by Code, the Contract Documents, any manufacturer or supplier, and all other testing performed, except for testing in support of N.J. Uniform Construction Code Special Inspections, and such additional testing as may be requested by the Authority pursuant to Section 6.11.3 below.”

See also Specification Section 02050, Part 1.4C and Part 3.1C, referencing the obligations of the Contractor to engage a “certified materials testing and inspection company” for services identified in that Specification.

29. Question: Please confirm the project will not be submitted to the green building association for any LEED certifications.

Answer: See Response to Question 1, above.

30. Question: Please confirm that the permit fees are to be paid by the Owner.

Answer: See Response to Question 8, above.

31. Question: Please confirm that the Structural Steel fabricator and erector must be AISC certified.

Answer: The Contract Documents do not require the steel fabricator and erector to be AISC certified.

32. Question: Please confirm that the existing soil considered clean and can be used for backfilling.

Answer: On site soil may be utilized for backfilling purposes only as indicated in Specification Section 02200 “Earthwork”, and “Earthwork Notes” on Drawing SW-102 and SW-104. For purposes of formulating their bids, bidders should assume on-site soils do not contain compounds in excess of a soil remediation standard, but bidders must still comply with the limitations on backfilling with on-site soils specified in Section 02200 “Earthwork.”

A No Further Action Letter has been issued by the New Jersey Department of Environmental Protection (NJDEP) for this project. All soil that does not meet the requirements of Specification Section 02200 “Earthwork”, and “Earthwork Notes” on Drawing SW-102 and SW-104 shall be exported from the site

pursuant to the Contract for Construction Services, General Conditions, Section 6.24.2.

If export is required, the costs of removal and disposal of soils found to contain compounds in excess of a soil remediation standard shall be compensable to the Contractor as Allowance items under Allowance 2 Impacted and Unsuitable Material Allowance (includes unforeseen subsurface concrete material). All soil material that is found not to contain compounds in excess of a soil remediation standard and that does not meet the requirements Specification Section 02200 "Earthwork", and "Earthwork Notes" on Drawing SW-102 and SW-104 is to be removed and disposed of offsite and costs for such removal and disposal shall be compensable to the Contractor per Allowance 2 Impacted and Unsuitable material Allowance.

33. Question: Please confirm that the plans have been submitted to DCA for review already and advise status of review.

Answer: The plans for the project were submitted to the DCA and DCA Plan Release was issued on September 9, 2014.

34. Question: Please clarify the project duration; General Condition as P.17 item 5.2.1 mentioned 731 days to Substantial completion followed by 90 days (821 days) to the final completion, while the Summary spec section 1010 mentioned 637 days to Substantial completion and 727 days to the final completion.

Answer: The Summary of Work Section 01010 is correct. The project duration is 637 days to Substantial Completion and 727 days to Final Completion. See Item B.1.c above, for changes to the General Conditions to implement this correction.

35. Question: (a) Please confirm that there are only 2 allowances associated with the project:
• (b) Constructability Allowance [of] \$200,000.00; and
• (c) Impacted and Unsuitable Material Allowance [of] \$550,000.00.

Answer: Confirmed; Refer to Specification Section 01010, "Summary of Work," Subsection 1.4.

36. Question: Please confirm that the Owner is responsible for the traffic controls for all underground utilities work performed on the Passaic Street and Marsellus Place.

Answer: Incorrect. Contractor is responsible for all traffic controls necessary or required for underground utilities work for the Project, including coordination with all authorities having jurisdiction. Refer to Specification Section 02000, Part 1.2 and Notes on Drawing SW-102, SW-105, and SW-108.

37. Question: Please confirm who will be the Construction manager assigned for this project.

- Answer: While the Construction Manager Contract has yet to be awarded or executed, the McCloud Group has been preliminarily identified and recommended to the SDA Board as the prospective awardee, subject to Board approval and McCloud Group's completion of all precontractual documentation obligations.
38. Question: Please confirm that the stair # 5 by stage area is concrete steps.
- Answer: Refer to Drawing A-503 and indicated Detail references for the construction of Stair No. 5.
39. Question: Please advise if there is any sidewalk bridges will be required during construction.
- Answer: Refer to drawings SW-101 and SW-107 for Safety Barrier and Covered Walkway requirements.
40. Question: Please confirm all the streets surrounding the project property can be closed off during construction without the need of full time police officer.
- Answer: Incorrect. The Contractor is required to observe and comply with all applicable County and municipal Traffic Control requirements, including coordination with any Authorities Having Jurisdiction and any required engagement of off-duty City of Garfield Police Officers, for any street closings required for or necessitated by the Work of the Project. Refer to Notes on Drawings SW-102, SW-105, and SW-108.
41. Question: Please provide details on the existing masonry retaining wall foundations need to be demolished along Marsellus place and Passaic Street.
- Answer: Refer to Drawing Nos: 26/152, 27/152, 72/152, 73/152 and 137/152, as prepared by RBA for the New Jersey Department of Transportation – Passaic Street Improvement, dated 6/27/85, included with this Addendum as Attachment(s) 2.1, 2.2, 2.3, 2.4, and 2.5. In estimating their bids for removal and disposal of existing masonry retaining wall footings and foundations, Contractors should assume the existence of 25% more underground foundation material than is currently shown on the above drawings
42. Question: Please advise how many test pits required for this project.
- Answer: The quantity of "Test Pits" shall be determined by the Contractor based on the information and Notes on Drawings SW-102 and all other drawings in the contract documents for this project
43. Question: The product details as they are laid out in drawing AV-501 do not align with systems implemented / designed into other recent SDA building projects. (Ex: Redshaw Elementary, Elliott Street Elementary, Philipsburg High School). The systems either installed or slated for these and other projects achieve a standard that incorporates a complete solution which includes AV System Control, AV

inputs, Network based system management, AV switching, Audio reinforcement (complete packaged solution).Is there a specific reason for this difference for this school, or was this simply overlooked? Please clarify.

Answer: Design for this project predated the institution of the SDA's Materials and Systems Standards, and while a subsequent revision of the Project Plans was performed to bring the Project into partial conformity with many of the Materials and Systems Standards, full conformity with those standards was not required. Accordingly, the Project documents may not be completely aligned with those of other SDA Projects recently advertised and bid. The Contractor is advised to formulate its bid according to the specific information contained in the bid package for this Project

44. Question: Need clarification on Exterior Ground face Color Schemes: Need Specific Color names for the following: Red, Gray, Yellow and White?

Answer: Red: Anchor, MX-19
Gray: Anchor, MX-8
Yellow: Anchor, MX-13
White: Anchor, MX-33.

45. Question: Need clarification on Color and Texture of Sound Blocks. Color 1, 2 and 3? Are these to be painted or to have a finish in a certain color?

Answer: Sound Blocks are to be painted in colors to be selected by the Architect.

46. Question: Drawing A-308 on Detail A39 shows a 8" Sound Block with a 2" CMU behind. Can we price up and 10" Sound Block?

Answer: No, construct the wall assembly as indicated on the drawings.

47. Question: Drawing # A-401 – Toilet accessory K is a seat cover dispenser that is only noted in (4) rooms. 111, 135, 224 & 332. There are what appears to be "K" accessories behind the toilets in rooms 136, 137, 225, 226, 333 & 334. It would make sense that seat cover dispensers would be at all toilets or none at all. Please clarify.

Answer: Provide Seat Cover Dispensers only in the specified Toilet Rooms.

48. Question: Please confirm that the existing temporary fence will be used under this contract and the Contractor will not carry a new temporary fence in its bid. Please advise who will remove and fence and own it after project completion.

Answer: Incorrect. The existing temporary fence will not continue in use for this Project. Per Specification Section 01500 ("Temporary Facilities and Controls"), the Contractor is responsible to install, maintain, remove and pay for a temporary site enclosure/security fencing as described within that Section 01500. Contractor shall be responsible to install said perimeter

enclosure/security fence within ten (10) working days of the initial Construction Notice to Proceed. Note that SDA will coordinate with the successful Bidder to schedule and coordinate SDA's removal of the existing fence, and the Bidder's installation of the enclosure/security fence per the Specification.

49A. Question: [Regarding} Specification 08700 Finish hardware:

A.) Hardware Set 17 is noted as not used, but door #132 is scheduled to have Hardware Set 17 on the door schedule. Please advise the correct hardware set for this door.

Answer: Refer to revised Specification Section 08700, ("Finish Hardware") dated 8-25-15, included as Attachment 2.8. Per the revised Specification, door # 132 is to be furnished with Hardware Set # 08 as defined in that Specification. Note that under the revised Specification, Hardware Set #17 remains unused.

49B. Question: Doors 109, 205, 307, 324A and 335 have note #5 in the door schedule remarks column, but the hardware specified will not function correctly with a proximity card reader. Please advise.

Answer: Refer to new Specification Section 08700, ("Finish Hardware") dated 8-25-15, included as Attachment 2.8. Per that revised Specification, the following Doors shall be furnished with Hardware Set #08A: 109, 205, 307, 324 (See also new Elevation #3 included in revised Specification). Per that revised Specification, Door 335 is to be furnished with new Hardware Set #08B (See also new Elevation #3 included in revised Specification).

E. CHANGES/CLARIFICATIONS TO PREVIOUS ADDENDA

1. CLARIFICATION TO ADDENDUM #1:

- a. Attachment 10 to Addendum 1, which included three full-size drawings (SW-102, SW-103 AND SW-105), was misidentified in that Addendum as Sketch AD1-SK1. The referenced sketch AD1-SK1, inadvertently omitted from Addendum 1, is included with this Addendum 2 as Attachment 2.6. See Item C.1 above, for changes to the drawings to reflect this clarification.

F. ATTACHMENTS

1. Attachment 2.1 Passaic Street Improvement Construction Plan 26/152, dated 6-27-85
2. Attachment 2.2 Passaic Street Improvement Construction Plan 27/152, dated 6-27-85
3. Attachment 2.3 Passaic Street Improvement Construction Plan 72/152, dated 6-27-85

4. Attachment 2.4 Passaic Street Improvement Construction Plan 73/152, dated 6-27-85
5. Attachment 2.5 Passaic Street Improvement Construction Plan 137/152, dated 6-27-85
6. Attachment 2.6 Sketch AD1- SK1 Brick Paver Detail, dated 8-3-15
7. Attachment 2.7 Sketch AD2-A01 Revised Playground Equipment Layout dated 8-14-15
8. Attachment 2.8 Revised Specification Section 08700 Finish Hardware dated 8-25-15
9. Attachment 2.9 Revised Bidder's Technical Proposal Certification Form, dated 08-26-15
10. Attachment 2.10 Revised Identification of Bidder's Required Key Team Members Form, dated 08-26-15.

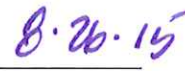
G. SUPPLEMENTAL INFORMATION

1. Not applicable.

Any bidder attempting to contact government officials (elected or appointed), including NJSDA Board members, NJSDA Staff, and Selection Committee members in an effort to influence the selection process may be immediately disqualified.

End of Addendum No.2


NJSDA Director


Date



Addendum #2

New Jersey Schools Development Authority
Office of Procurement
32 East Front Street
Trenton, NJ 08625
Phone: 609-858-2986
Fax: 609-656-7238

Date: August 26, 2015

PROJECT #: NT-0014-C03
Garfield James Madison Elementary School
Garfield Public Schools

DESCRIPTION: Addendum #2

Acknowledgement of Receipt of Addendum

Contractor hereby acknowledges the receipt of this Addendum by signing in the space provided below and returning via fax to (609-656-7238) or E-mail (NKathiari@njsda.gov). Signed acknowledgements must be received prior to the Bid Due Date. Acknowledgement of the Addendum must be made in Section E.6 of the Price Proposal Submission.

Signature

Print Name

Company Name

Date

ATTACHMENT 2.1

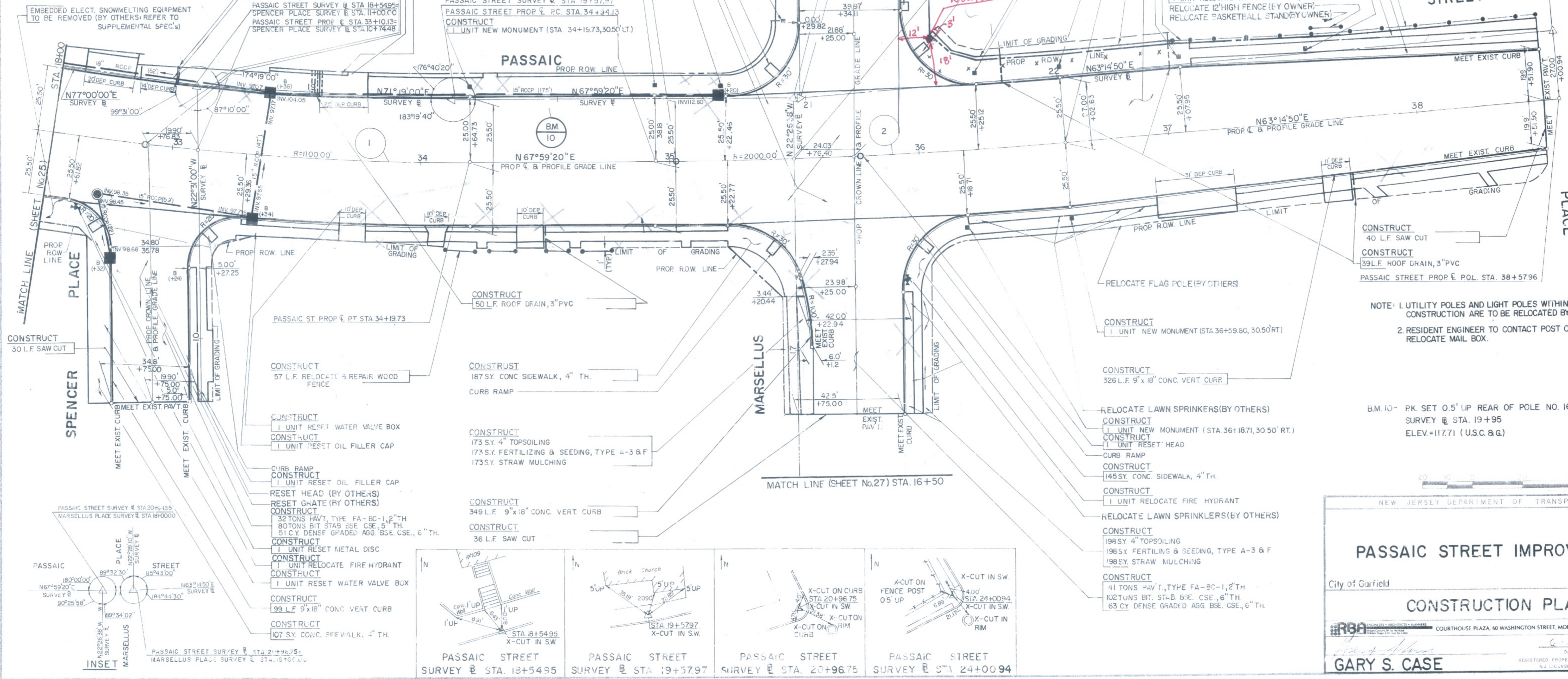
ITEM NO.	TO BE CONSTRUCTED	CONTRACT QUANTITY	AS-BUILT QUANTITY
38	DENSE GRADED AGGREGATE BASE COURSE	750 CY.	
39	BITUMINOUS STABILIZED BASE COURSE	1436 TONS	
42	PAVEMENT, TYPE FA-BC-1	507 TONS	
44	PRIME COAT	1080 GALS.	
37	SAW CUT	149 L.F.	
98	NEW MONUMENT	10 UNITS	
53	15" REINFORCED CONCRETE CULVERT PIPE	303 L.F.	
57	18" REINFORCED CONCRETE CULVERT PIPE	82 L.F.	
63	RESET HEAD	3 UNITS	
65	RESET WATER VALVE BOX	2 UNITS	
66	RESET OIL FILLER CAP	1 UNIT	
61	RESET SEWER CLEANOUT BOX	1 UNIT	
111	RESET METAL DISC	1 UNIT	
77	RELOCATE FIRE HYDRANT	2 UNITS	
103	RELOCATE CHAIN LINK FENCE	146 L.F.	
105	RELOCATE & REPAIR WOOD FENCE	67 L.F.	
83	INLET, TYPE B (6" HEAD), PARALLEL BAR GRATE	4 UNITS	
86	MANHOLE	1 UNIT	
88	MANHOLES, INLETS & CATCH BASINS, ADDITIONAL DEPTH	7.8 L.F.	
92	9" x 18" CONCRETE VERTICAL CURB	1471 L.F.	
95	CONCRETE SIDEWALK, 4" THICK	975 S.Y.	
96	CONCRETE SIDEWALK, 6" THICK, H.E.S.	105 S.Y.	
198	4" TOPSOILING	560 S.Y.	
199	FERTILIZING & SEEDING, TYPE A-3 & F	560 S.Y.	
200	STRAW MULCHING	560 S.Y.	
104	RELOCATE CHAIN LINK GATE	1 UNIT	
72	ROOF DRAIN, 3" PVC	89 L.F.	
74	ROOF DRAIN, 4" PVC	7 L.F.	
123	RELOCATE BRICK WALL	L.S.	

SCALE : 1" = 20'

FED. ROAD DIV. NO.	FED. AID PROJECT NO.	STATE	FISCAL YEAR	SHEET NO.	TOTAL SHEETS
1	MG-0005 (439)	N.J.		26	152

DRIVEWAY SUMMARY					
STATION	CONC. SIDEWALK 6" TH. H.E.S.	FA-BC-1 2" TH.	BIT. STAB. BSE. CSE., 6" TH.	BIT. STAB. BSE. CSE., 4" TH.	
32+70 LEFT	18 SY.	0.5 TONS	1 TONS		
33+67 LEFT	21 SY.	0 TONS	0 TONS		
33+72 RIGHT	8 SY.	0 TONS	0 TONS		
34+05 RIGHT	6 SY.	0.5 TONS	1 TONS		
34+43 RIGHT	8 SY.	1 TON	1 TON		
37+10 RIGHT	24 SY.	1 TON	1 TON		
37+67 RIGHT	9 SY.	1 TONS	2 TONS		
32+92 LEFT	11 SY.	0 TONS	0 TONS		
TOTAL	= 106 SY.	4 TONS	6 TONS		

CURVE DATA					
NO.	Δ	R	L	T	E
(1)	09°04'40"	1100.00'	17300'	86.68'	344'
(2)	04°44'30"	2000.00'	165.52'	82.81'	1.70'



NOTE: 1. UTILITY POLES AND LIGHT POLES WITHIN LIMITS OF CONSTRUCTION ARE TO BE RELOCATED BY OTHERS.
2. RESIDENT ENGINEER TO CONTACT POST OFFICE TO RELOCATE MAIL BOX.

BM. 10 - PK. SET 0.5' UP REAR OF POLE NO. 166-G PASSAIC STREET SURVEY @ STA. 19+95 ELEV. = 117.71 (U.S.C. & G.)

NEW JERSEY DEPARTMENT OF TRANSPORTATION

PASSAIC STREET IMPROVEMENT

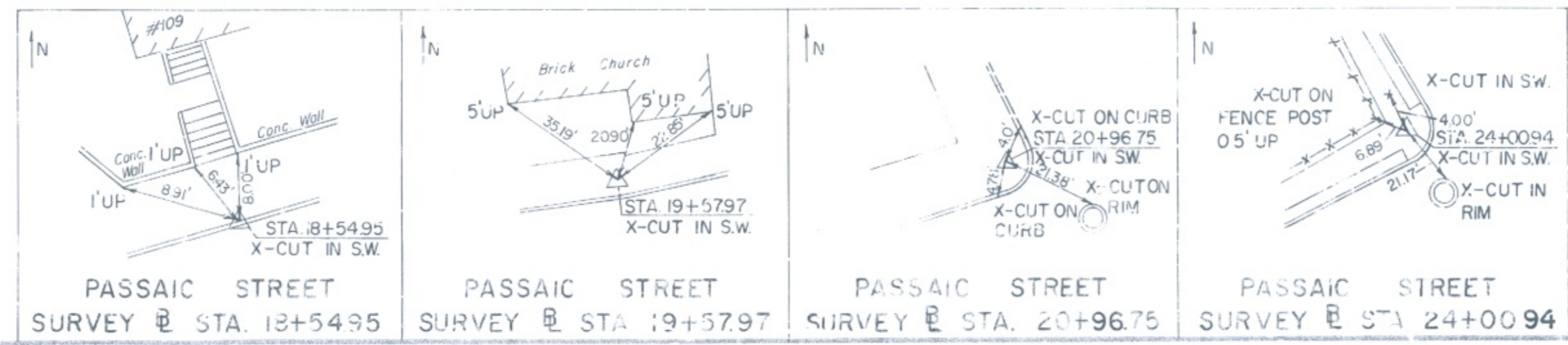
City of Garfield New Jersey

CONSTRUCTION PLAN

COURTHOUSE PLAZA, 60 WASHINGTON STREET, MORRISTOWN, NJ 07960

GARY S. CASE

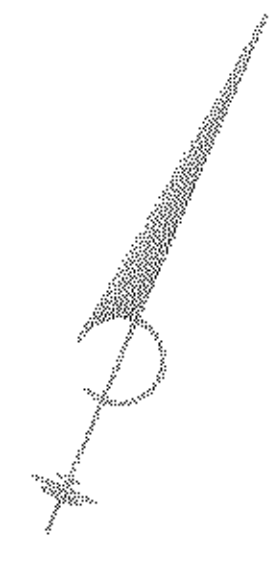
DATE: 6-1-15
REGISTERED PROFESSIONAL ENGINEER
NJ LICENSE NO. 15508



ATTACHMENT 2.2

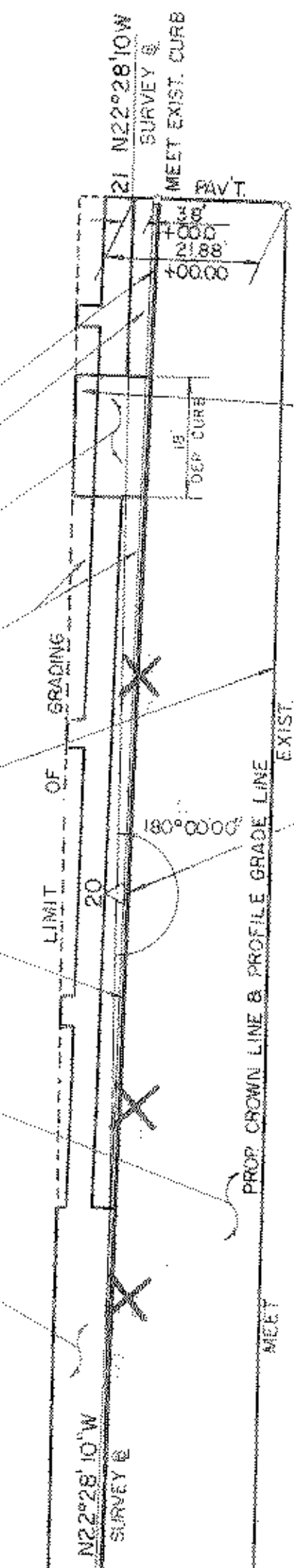
SCALE : 1" = 20'

FED. ROAD DIV. NO.	FED. AID PROJECT NO.	STATE	FISCAL YEAR	SHEET NO.	TOTAL SHEETS
1	MG-GOODS (439)	N.J.		27	152



MATCH LINE (SHEET NO.26) STA. 16+50

- CONSTRUCT
201 L.F. 9" x 18" CONC. VERT. CURB
- 1 UNIT RESET GAS VALVE (BY OTHERS)
- CONSTRUCT
15 S.Y. CONC. SIDEWALK, 6" TH., H.S.
- CONSTRUCT
81 S.Y. 4" TOPSOILING
- 81 S.Y. FERTILIZING & SEEDING, TYPE A-3 & F
- 81 S.Y. STRAW MULCHING
- CONSTRUCT
218 L.F. SAW CUT
- CONSTRUCT
2 UNITS RELOCATE WATER VALVE
- CONSTRUCT
54 TONS PAV'T, TYPE FA-BC-1, 2" TH.
- 126 TONS BIT. STAB. BSE. CSE., 5" TH.
- 82 CY. DENSE GRADED AGG. BSE. CSE., 6" TH.
- CONSTRUCT
113 S.Y. CONC. SIDEWALK, 4" TH.

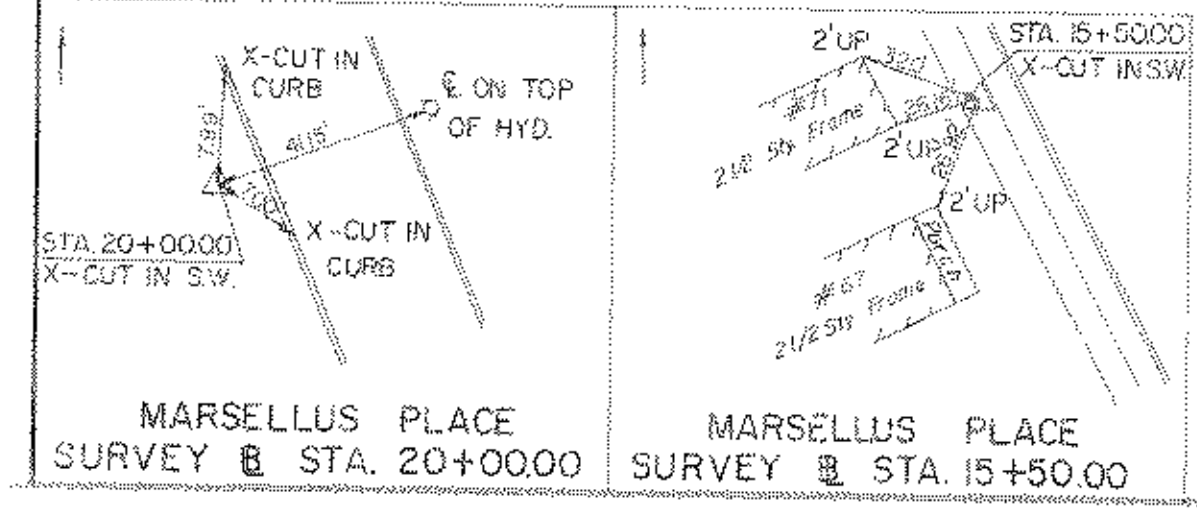


CONSTRUCT
1 TONS PAV'T, TYPE FA-BC-1, 2" TH.
1 TONS BIT. STAB. BSE. CSE., 4" TH.
MARSELLUS PLACE SURVEY @ STA. 15+50.00
MARSELLUS PLACE SURVEY @ STA. 20+00.00

ITEM NO.	TO BE CONSTRUCTED	CONTRACT QUANTITY	AS-BUILT QUANTITY
38	DENSE GRADED AGGREGATE BASE COURSE	82 CY.	
39	BITUMINOUS STABILIZED BASE COURSE	136 TONS	
42	PAVEMENT, TYPE FA-BC-1	55 TONS	
44	PRIME COAT	119 GALS.	
65	RESET WATER VALVE BOX	1 UNIT	
78	RELOCATE WATER VALVE	2 UNITS	
92	9" x 18" CONCRETE VERTICAL CURB	201 L.F.	
95	CONCRETE SIDEWALK, 4" THICK	113 S.Y.	
96	CONCRETE SIDEWALK, 6" THICK, H.S.	15 S.Y.	
198	4" TOPSOILING	81 S.Y.	
199	FERTILIZING & SEEDING, TYPE A-3 & F	81 S.Y.	
200	STRAW MULCHING	81 S.Y.	
37	SAW CUT	218 L.F.	

MATCH LINE (SHEET NO. 26) STA. 19+00 VARIES

NOTE: UTILITY POLES AND LIGHT POLES WITHIN LIMITS OF CONSTRUCTION ARE TO BE RELOCATED BY OTHERS. B.M. IO-PK. SET 0.5' UP REAR OF POLE NO. 166-G PASSAIC STREET SURVEY @ STA. 19+95 ELEV = 117.71 (ASSUMED)



NEW JERSEY DEPARTMENT OF TRANSPORTATION

PASSAIC STREET IMPROVEMENT

City of Garfield New Jersey

CONSTRUCTION PLAN

RBA ENGINEERS & ARCHITECTS
COURTHOUSE PLAZA 60 WASHINGTON STREET, MORRISTOWN, NJ 07960

DATE: 6-27-85
REGISTERED PROFESSIONAL ENGINEER
GARY S. CASE N.J. LICENSE NO. 15508

27 / 152

ATTACHMENT 2.3

FED ROAD DIV NO	FED AID PROJECT NO	STATE	FISCAL YEAR	SHEET NO	TOTAL SHEETS
1	MG-0005 (439)	N.J.		72	152

ITEM NO.	TO BE CONSTRUCTED	CONTRACT QUANTITY	AS-BUILT QUANTITY
126	THERMOPLASTIC REFLECTORIZED TRAFFIC STRIPES	4908 L.F.	
127	THERMOPLASTIC REFLECTORIZED PAVEMENT MARKINGS	13 UNITS	
128	SIGNS 12" x 18"	18 UNITS	
130	SIGNS 30" x 30"	6 UNITS	
139	1 1/2" Ø RIGID METALLIC CONDUIT, TYPE CUG	150 L.F.	
140	3" Ø RIGID METALLIC CONDUIT, TYPE CUG	240 L.F.	
153	STANDARD FOUNDATION, CLASS SFT	4 UNITS	
158	18" x 36" JUNCTION BOX, CLASS JB	9 UNITS	
150	LOOP TERM. FEED THRU	6 UNITS	
159	CONTROLLER (2 PHASE, SEMI-ACTUATED)	1 UNIT	
155	FOUNDATION TYPE P	1 UNIT	
135	OBJECT MARKER, TYPE 3	1 UNIT	
166	PUSH BUTTON ASSEMBLY, CLASS FB (W/SIGN F)	4 UNITS	
171	TRAFFIC SIGNAL STANDARD, TYPE T	4 UNITS	
178	TRAFFIC SIGNAL ASSEMBLY, TYPE 16M-2	2 UNITS	
180	TRAFFIC SIGNAL ASSEMBLY, TYPE 20M-2	2 UNITS	
195	PEDESTRIAN SIGNAL ASSEMBLY, TYPE W-1	8 UNITS	
149	LOOP DETECTOR, IMSA # 51-5-1985	1600 L.F.	
148	LOOP DETECTOR LEADS, 2/C #14 CABLE, TPISH (IMSA # 50-2-1984)	1700 L.F.	
144	PUSHBUTTON, 2/C #14 CABLE, TPISH (IMSA # 50-2-1984)		
146	SIGNAL WIRE, 7/C #14 CABLE, IMSA # 19-1-1984	1400 L.F.	
151	SERVICE WIRE, #6 AWG, THWN	99 L.F.	

SCALE : 1" = 20'

PASSAIC STREET AND MARSELLUS PLACE
SIGNAL SEQUENCE
90 Second Background Cycle

PHASE	SIGNAL PHASES	TIME (SEC.)	OFFSET (SEC.)
1-4	5-8 9-12 13-16		

Vehicle Actuation

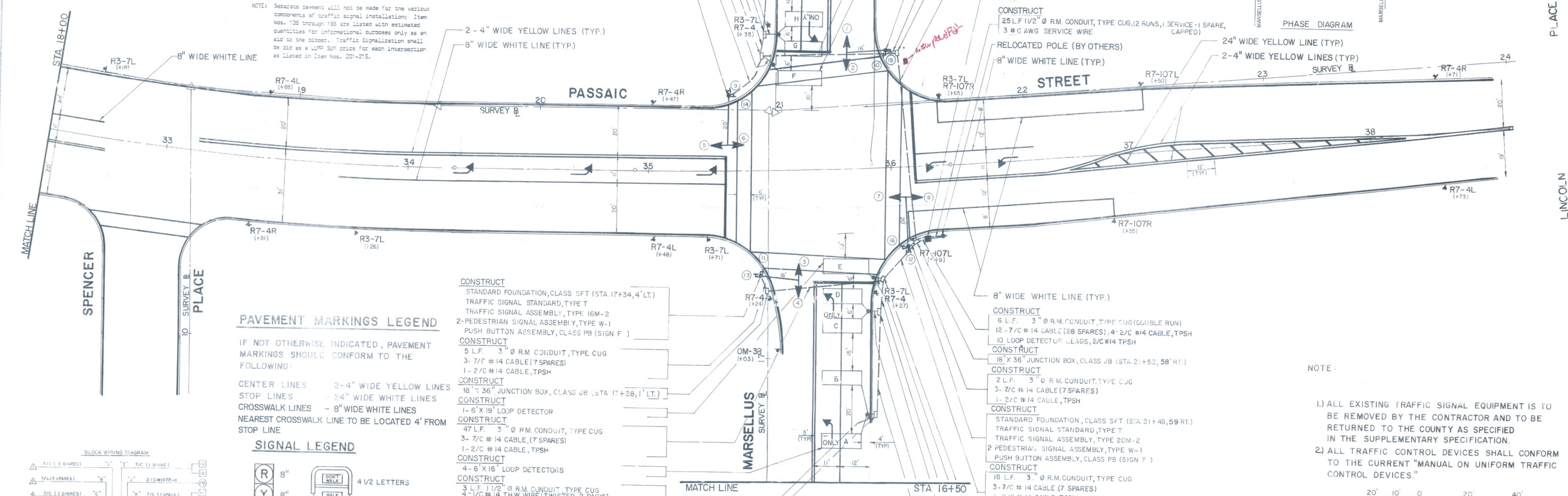
PHASE	ACTUATION	TIME (SEC.)	OFFSET (SEC.)
1. ROW Passaic Street	R G W DW	58-40	
1. Pedestrian Clearance	R R Y G DW(E) DW	14	
1. Change	R R Y G DW DW	3.5	12*
1. All Red	R R Y G DW DW	1.5	
2. ROW Marsellus Place	G G R R DW DW	8-26	
2. Change	Y R R DW DW	3	
2. All Red	R R R DW DW	2	

Pedestrian Actuation

PHASE	ACTUATION	TIME (SEC.)	OFFSET (SEC.)
1. ROW Passaic Street	R G W DW	40	
1. Pedestrian Clearance	R R Y G DW(E) DW	14	
1. Change	R R Y G DW DW	3.5	12*
1. All Red	R R Y G DW DW	1.5	
2. ROW Marsellus Place	G G R R DW DW	12	
2. Pedestrian Clearance	Y R R DW DW(E) DW	14	
2. Change	Y R R DW DW	3	
2. All Red	R R R DW DW	2	

Flashing Operation R Y Out Out

Vehicle interval is to be 2 seconds.
Manual control is to be omitted from the controller.
Phase 1 Walk to be set at 32 seconds.
*An offset of 12 seconds shall be measured from the beginning of yellow to Passaic Street at Midland Avenue to the beginning of yellow to Marsellus Street at this intersection.
Controller shall rest in phase 1 walk interval.

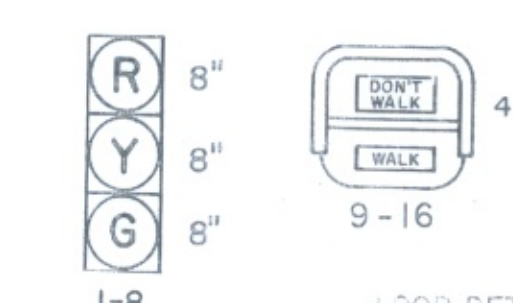


PAVEMENT MARKINGS LEGEND

IF NOT OTHERWISE INDICATED, PAVEMENT MARKINGS SHOULD CONFORM TO THE FOLLOWING:

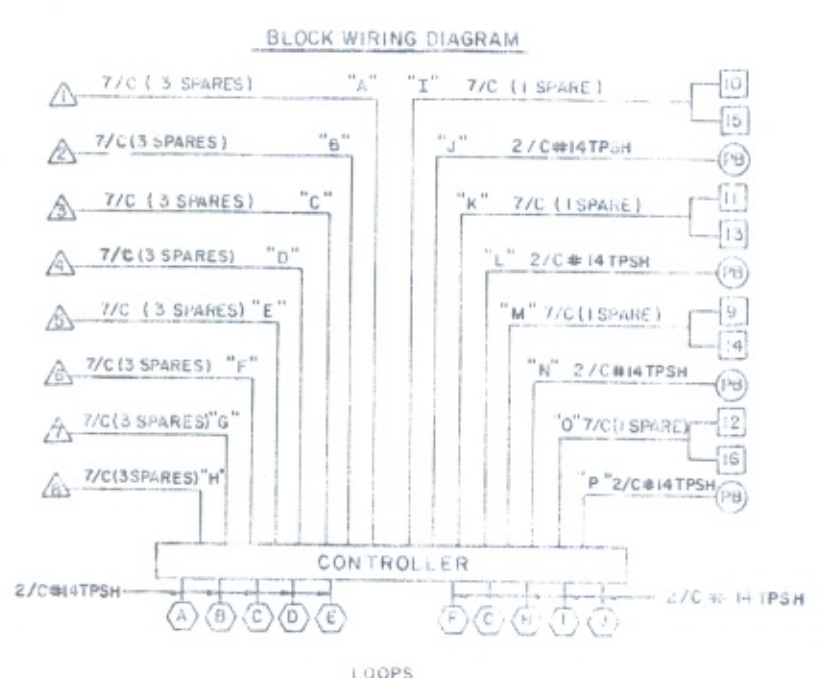
CENTER LINES - 2-4" WIDE YELLOW LINES
STOP LINES - 24" WIDE WHITE LINES
CROSSWALK LINES - 8" WIDE WHITE LINES
NEAREST CROSSWALK LINE TO BE LOCATED 4' FROM STOP LINE

SIGNAL LEGEND



LOOP DETECTOR SCHEDULE

LOOP	STATION	SIZE	TYPE	TRENCH	# OF TURNS	MIN. W.P.
A	16+42	6' x 16'	PRESSENCE ASPHALT		3	170
B	16+55	6' x 16'	PRESSENCE ASPHALT		3	170
C	17+14	6' x 16'	PRESSENCE ASPHALT		3	170
D	17+26	6' x 16'	PRESSENCE ASPHALT		3	170
E	17+36	6' x 16'	PRESSENCE ASPHALT		3	180
F	17+45	6' x 16'	PRESSENCE ASPHALT		3	170
G	17+57	6' x 16'	PRESSENCE ASPHALT		3	170
H	18+00	6' x 16'	PRESSENCE ASPHALT		3	170
I	18+00	6' x 16'	PRESSENCE ASPHALT		3	170
J	18+00	6' x 16'	PRESSENCE ASPHALT		3	170



NOTE:

- 1.) ALL EXISTING TRAFFIC SIGNAL EQUIPMENT IS TO BE REMOVED BY THE CONTRACTOR AND TO BE RETURNED TO THE COUNTY AS SPECIFIED IN THE SUPPLEMENTARY SPECIFICATION.
- 2.) ALL TRAFFIC CONTROL DEVICES SHALL CONFORM TO THE CURRENT "MANUAL ON UNIFORM TRAFFIC CONTROL DEVICES."



NEW JERSEY DEPARTMENT OF TRANSPORTATION

PASSAIC STREET IMPROVEMENT

City of Garfield New Jersey

ELECT., SIGN. & STRIP. PLAN

RBA ENGINEERS, ARCHITECTS & PLANNERS
COURTHOUSE PLAZA, 60 WASHINGTON STREET, MORRISTOWN, NJ 07960

GARY S. CASE
REGISTERED PROFESSIONAL ENGINEER
N.J. LICENSE NO. 15508

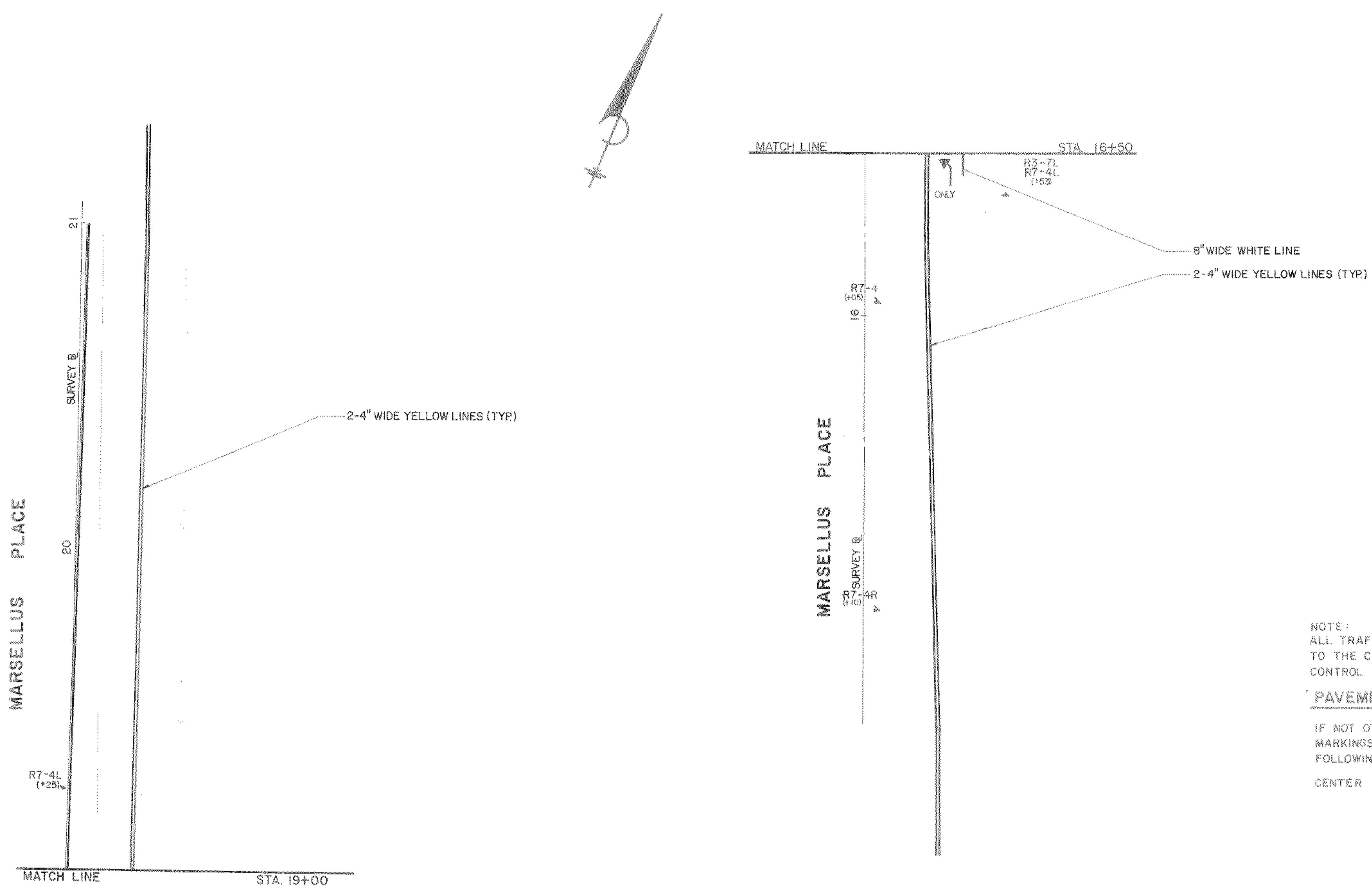
DATE: 6-27-85

SHEET NO. 72 TOTAL SHEETS 152

ATTACHMENT 2.4

SCALE : 1" = 20'

FED. ROAD DIV. NO.	FED. AID PROJECT NO.	STATE	FISCAL YEAR	SHEET NO.	TOTAL SHEETS
1	MG-GOODS (439)	N.J.		73	152



NOTE:
ALL TRAFFIC CONTROL DEVICES SHALL CONFORM TO THE CURRENT "MANUAL ON UNIFORM TRAFFIC CONTROL DEVICES."

PAVEMENT MARKINGS LEGEND

IF NOT OTHERWISE INDICATED, PAVEMENT MARKINGS SHOULD CONFORM TO THE FOLLOWING:
CENTER LINES - 2-4" WIDE YELLOW LINES

ITEM NO.	TO BE CONSTRUCTED	CONTRACT QUANTITY	AS-BUILT QUANTITY
126	THERMOPLASTIC REFLECTORIZED TRAFFIC STRIPES	908 L.F.	
127	THERMOPLASTIC REFLECTORIZED PAVEMENT MARKINGS	2 UNITS	
128	SIGNS, 12" x 18"	4 UNITS	
130	SIGNS, 30" x 30"	1 UNIT	



NEW JERSEY DEPARTMENT OF TRANSPORTATION

PASSAIC STREET IMPROVEMENT

City of Garfield New Jersey

SIGN. & STRIP. PLAN

RBA COURTHOUSE PLAZA, 60 WASHINGTON STREET, MORRISTOWN, NJ 07960

Gary S. Case 6-27-85
GARY S. CASE REGISTERED PROFESSIONAL ENGINEER
NJ LICENSE NO. 15508

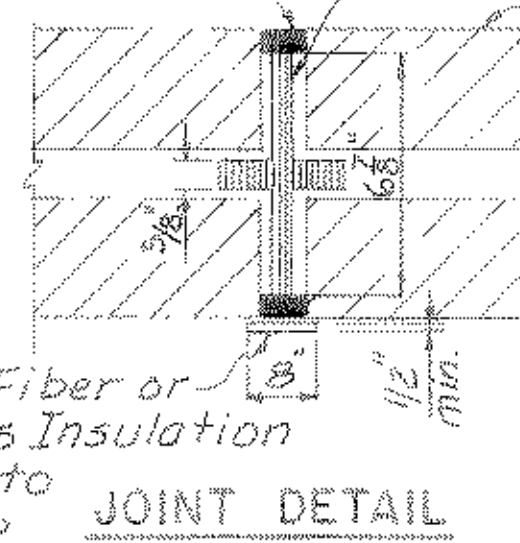
73
152

ATTACHMENT 2.5

GENERAL NOTES:

1. Design Specifications 1979 BIA Building Code Requirements for Engineered Brick Masonry.
2. Brick Masonry
 - (a) ASTM C216
 - (b) Specified compressive strength (f'm) = 2000 PSI
 - (c) Extreme fiber in compression (f'm) = 800 PSI
3. Refer to "Construction Plan", Passaic St. Improvement, for Key Plan of Structure.
4. Refer to "Wall Plan - Elevation & Details," Lanza Ave. & Ray St. for additional General Notes.

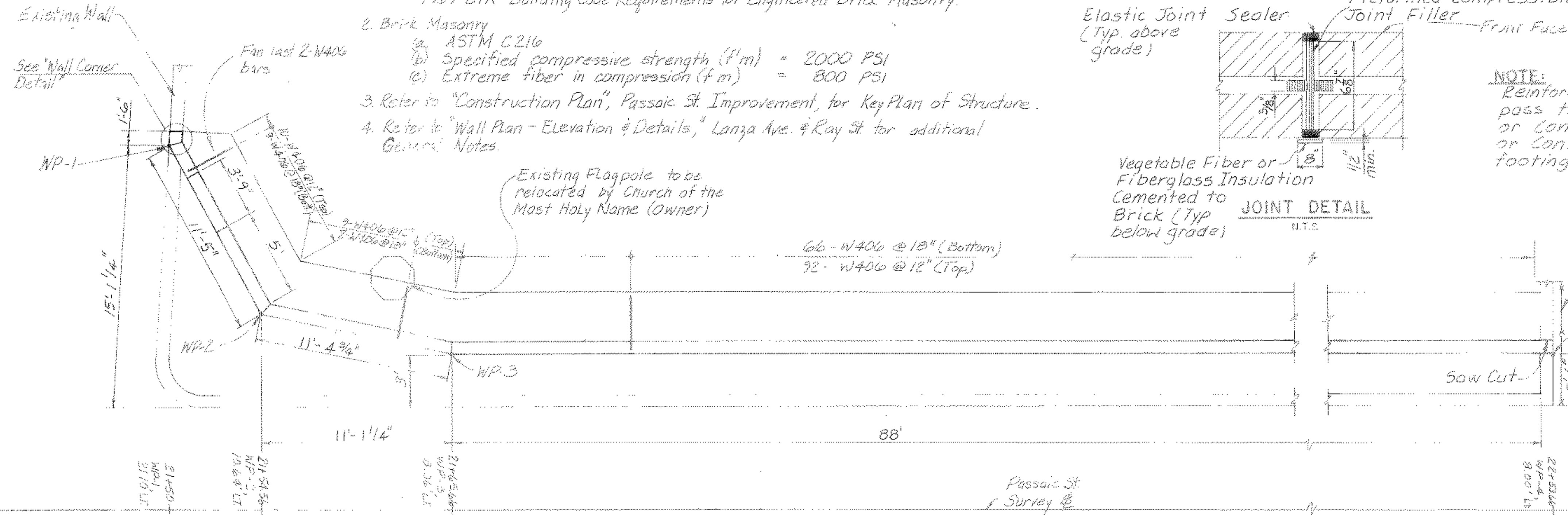
Elastic Joint Sealer (Typ. above grade)
 Preformed Compressible Joint Filler - Front Face of Wall



NOTE:
 Reinforcement shall not pass through Expansion or Control Joints in Wall, or Contraction Joints in footing.

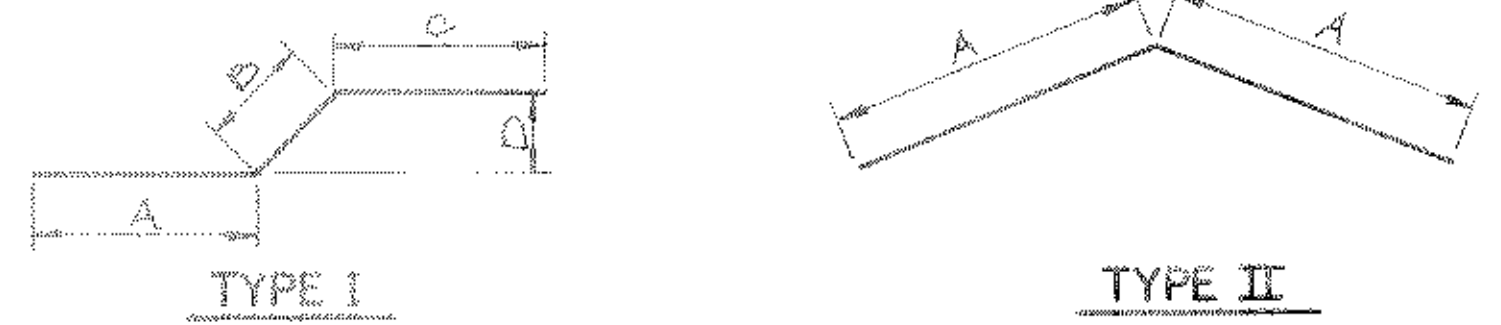
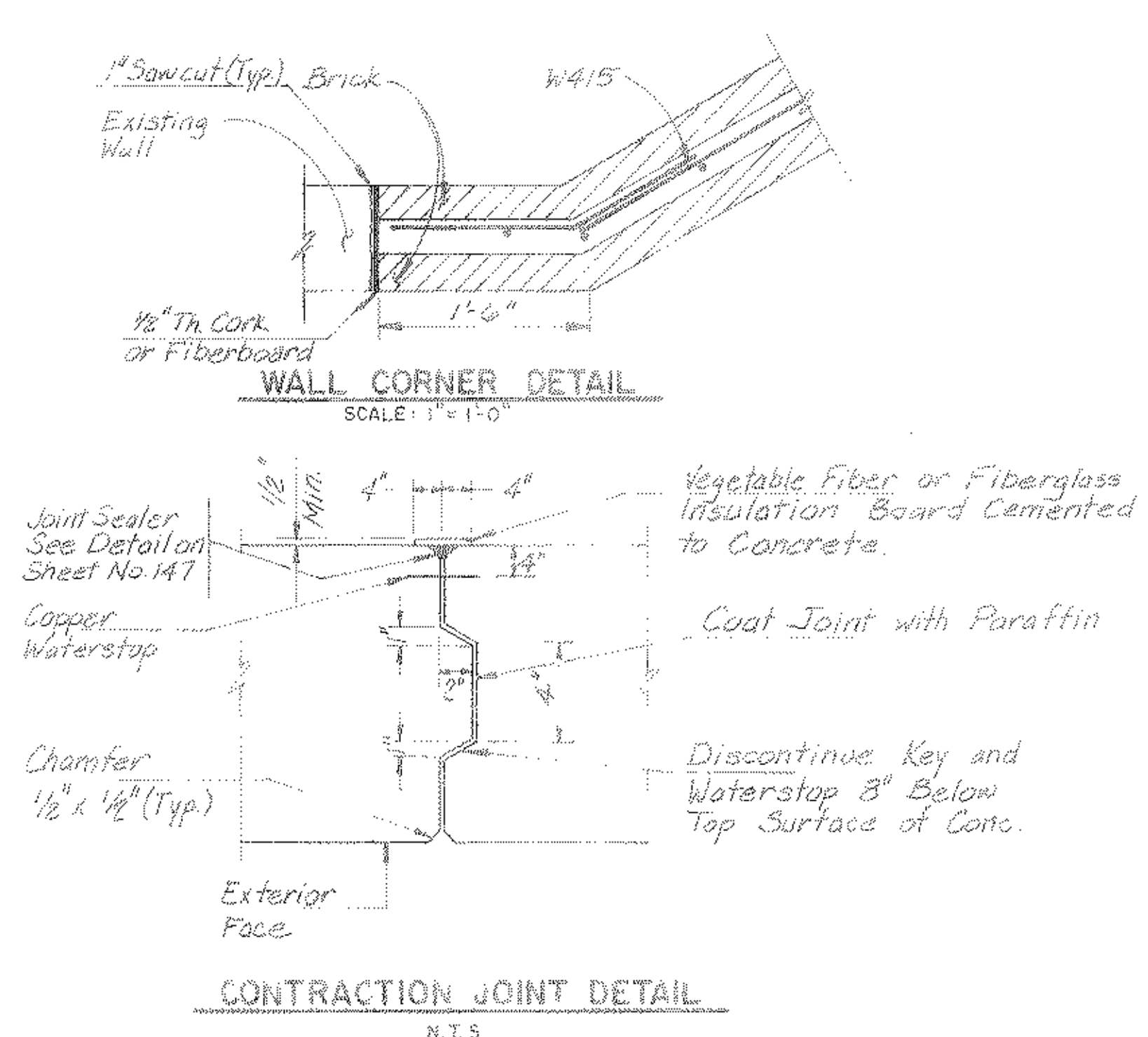
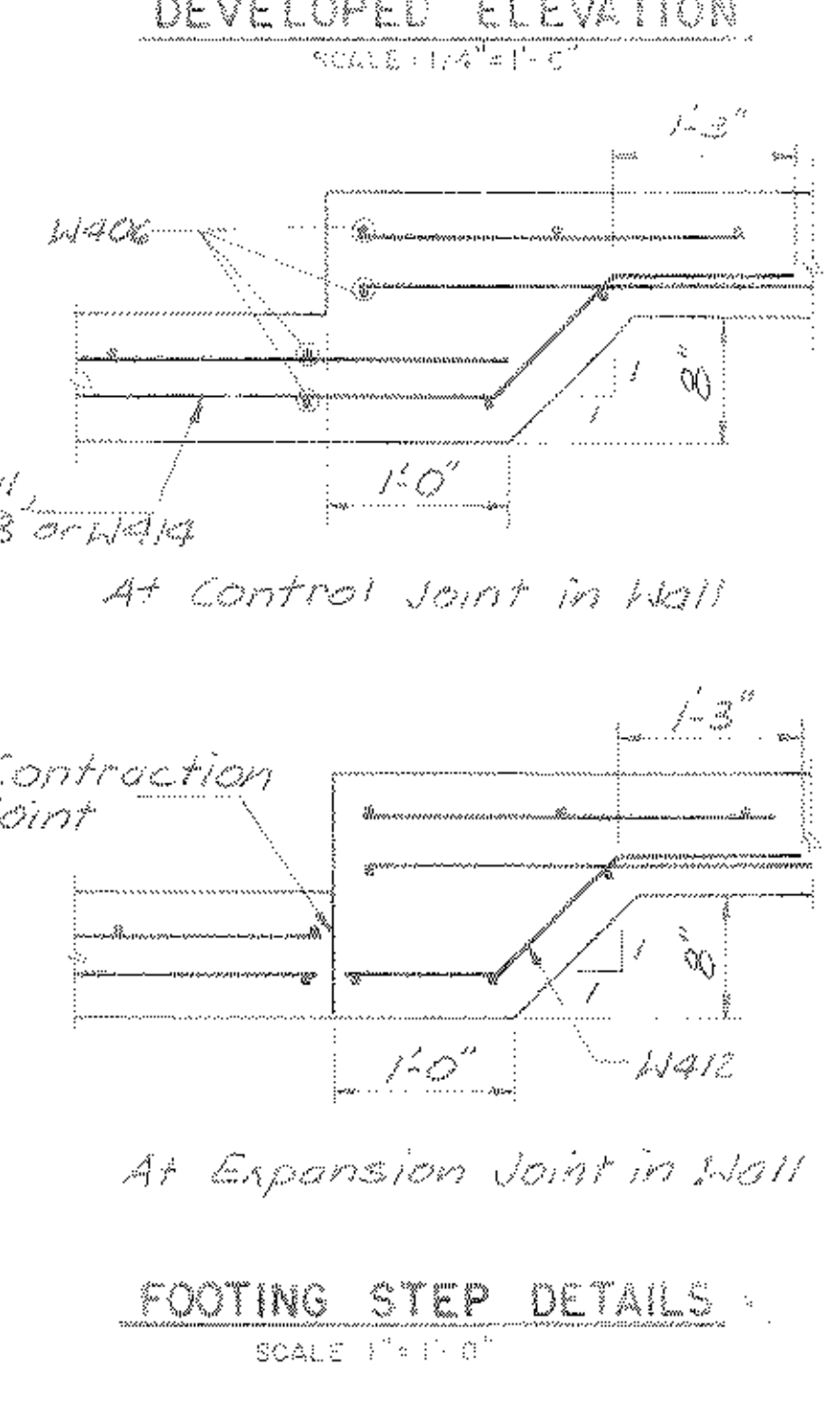
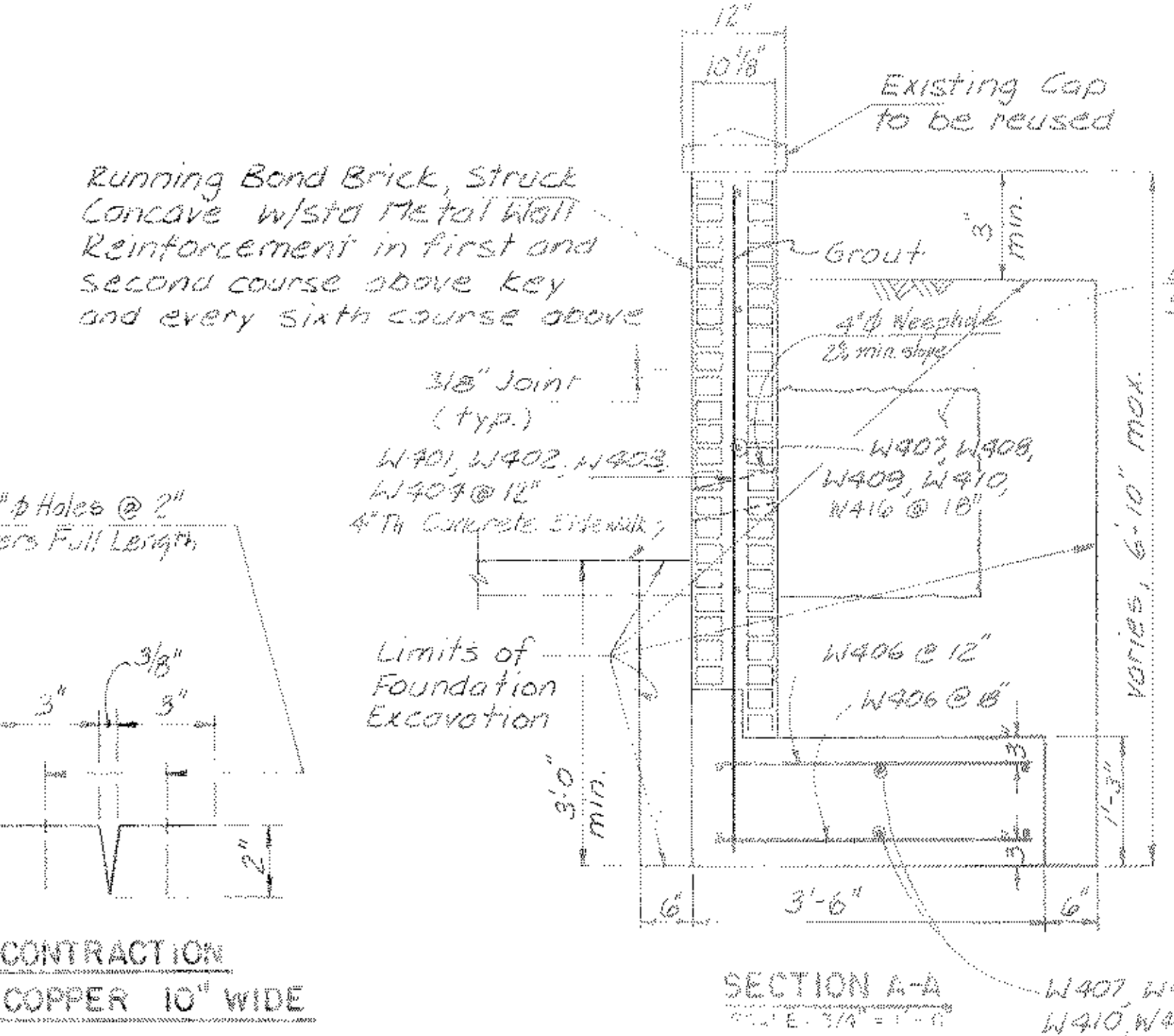
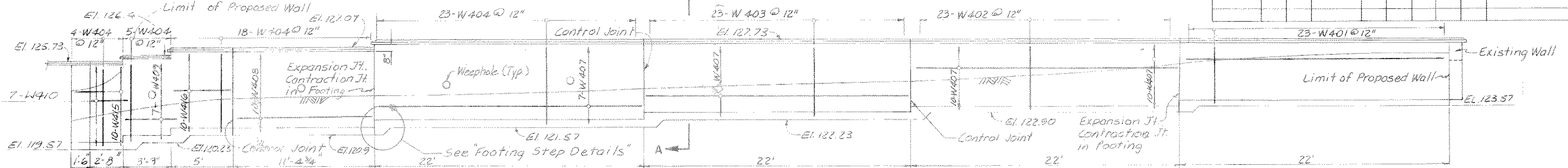
BAR LIST (GRADE 60)

MARK	TYPE	SIZE	LENGTH	TOTAL	DIMENSIONS				REMARKS
					A	B	C	D	
W401	STR	4	3'-4"	23					
W402	STR	4	4'-0"	23					
W403	STR	4	4'-8"	23					
W404	STR	4	5'-4"	50					
W406	STR	4	3'-0"	193					
W407	STR	4	2'-6"	34					
W408	STR	4	1'-0"	10					
W409	STR	4	4'-9"	7					
W410	STR	4	3'-6"	7					
W411	I	4	25'-0"	6	22'-9"	11'-2"	1'-3 3/4"	8"	
W412	I	4	3'-0"	6	9"	11'-2"	1'-3 3/4"	8"	
W413	I	4	6'-9"	3	4'-6"	11'-2"	1'-3 3/4"	8"	
W414	I	4	5'-8"	3	3'-5"	11'-2"	1'-3 3/4"	8"	
W415	II	4	2'-6"	10	1'-3"				
W416	STR	4	4'-6"	10					



(GRADE 40 ALT.)

MARK	TYPE	SIZE	LENGTH	TOTAL	DIMENSIONS				REMARKS
					A	B	C	D	



ESTIMATED QUANTITIES			
ITEM	UNIT	ESTIMATED QUANTITIES	AS-BUILT QUANTITY
RELOCATE BRICK WALL	L.S.	L.S.	
* GROUT	C.Y.	3	
* BRICK MASONRY	S.F.	785	
* FOUNDATION EXCAVATION	C.Y.	88	
* REINFORCEMENT STEEL FOR STRUCTURES	LB.	1540	
* CLASS B CONCRETE FOR STRUCTURES	C.Y.	19	
* QUANTITIES FOR CONTRACTORS INFORMATION ONLY.			

NEW JERSEY DEPARTMENT OF TRANSPORTATION

PASSAIC STREET IMPROVEMENT

City of Garfield New Jersey

WALL - PLAN, ELEVATION & DETAILS

DATE: 6-27-85
 GARY S. CASE REGISTERED PROFESSIONAL ENGINEER
 N.J. LICENSE NO. 15508

137
 152

ATTACHMENT 2.6

FVHDP.C.O.M



JOHN J. VEISZ, AIA, CSBA
NJ - 214008800
PA - RA010818
WILLIAM D. HOPKINS III, AIA, LEED AP
NJ - 214017000
PA - RA01020X
GEORGE R. DUTHE, JR., AIA, PP
NJ - 214010200

Project Name
New James
Madison School #10
NJ SDA
NT-0014-C03

Project Owner Name
NJ Schools
Development Authority
Garfield School
District

Project Location
99 Marsellus Place
Garfield, NJ

Project Number
4352

Project Date
08.03.15

Checked By
W.B.E.

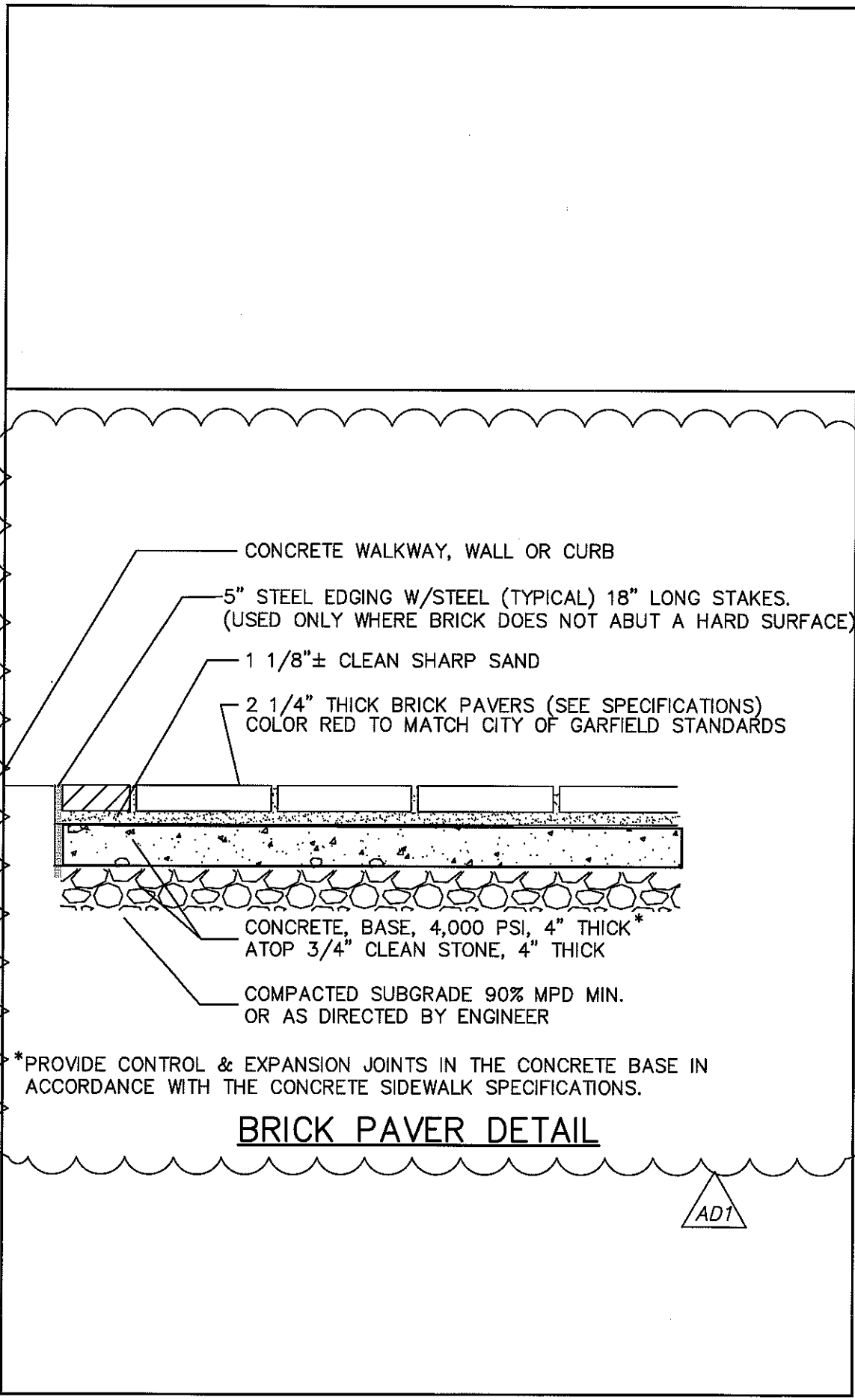
Drawn By
SRP-EEG

Scale
NONE

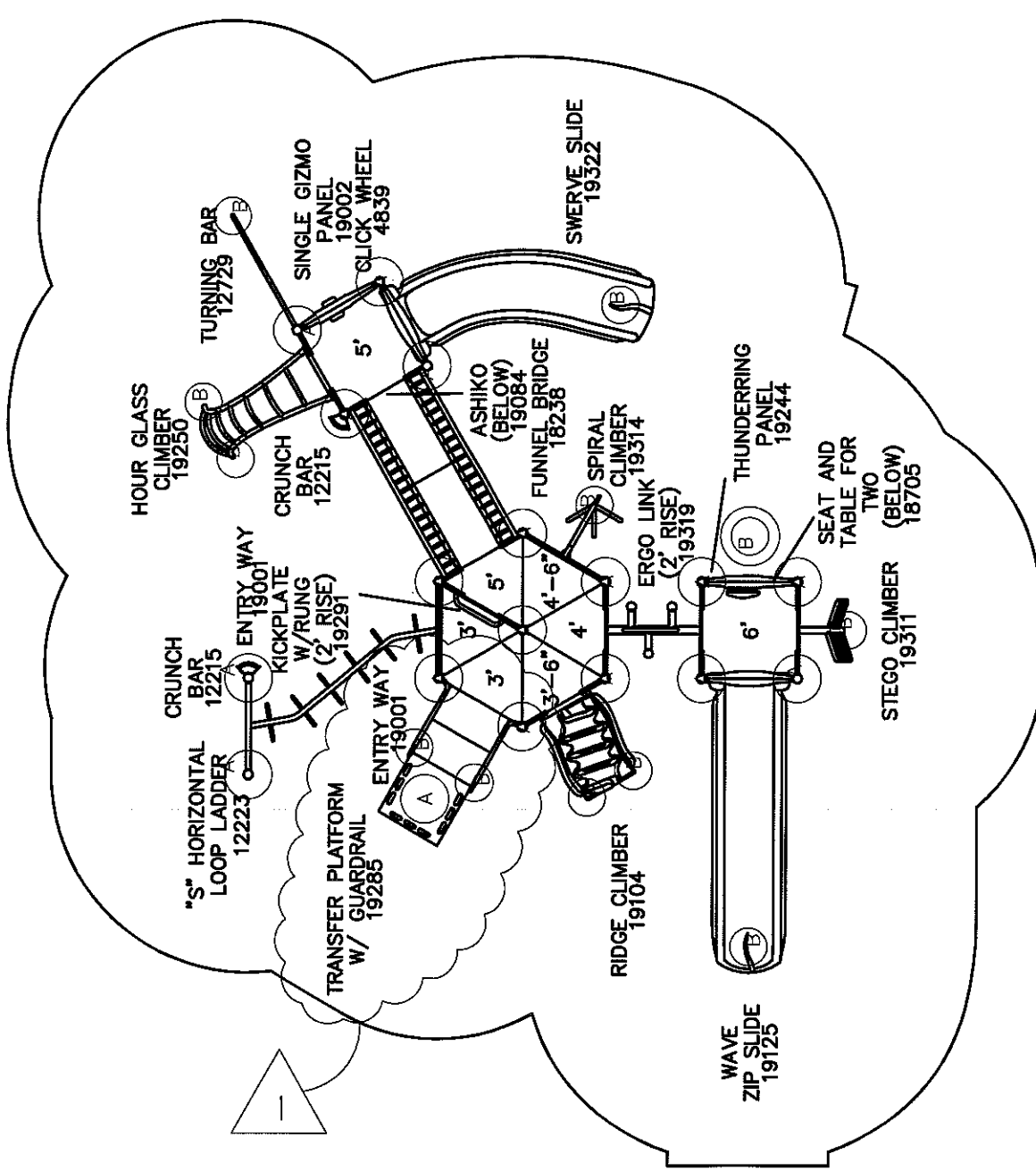
Drawing Name
REVISED
DETAIL OF BRICK
PAVERS
Ref. SW-110

Revisions		
No	Date	Description
A1	8.03.15	Addendum Sketch

Drawing Number
AD1-SK1



ATTACHMENT 2.7



REVISED PLAYGROUND EQUIPMENT LAYOUT

SCALE: N.T.S.

FVHDP.C.COM



JOHN A. VEISZ, AIA, CSBA
 NJ-21A00866200
 PA-18A0108188
 WILLIAM D. HOPKINS III, AIA, LEED AP
 NJ-21A00866200
 PA-18A0108188
 GEORGE R. DUTHEIL, AIA, PP
 NJ-21A01296200

Project Name
NEW JAMES MADISON ELEMENTARY SCHOOL #10

Project Owner Name
GARFIELD SCHOOL DISTRICT

Project Location
GARFIELD BERGEN COUNTY NEW JERSEY

Project Number
4423

Project Date

Checked By
J.J.V.

Drawn By

Scale
N.T.S.

Drawing Name
REVISED PLAYGROUND EQUIPMENT LAYOUT

Revisions	No.	Date	Description
	1	06/14/16	ADDENDUM #2

Drawing Number
AD2-A01

Date

Architect

ATTACHMENT 2.8

SECTION 08700 - FINISH HARDWARE

PART 1 - GENERAL

1.1 RELATED DOCUMENTS

- A. The General Provisions of the Contract, including General and Supplementary Conditions and General Requirements, apply to the work specified in this section

1.2 DESCRIPTION OF WORK

- A. The work in this section includes providing all labor, materials, appliances, and services required to completely furnish and deliver all finish hardware and related work, complete in accordance with the Architect's drawings and specifications, including, but not limited to the following:
 - 1. All finish hardware for aluminum/FRP, hollow metal and wood doors in aluminum and hollow metal frames.
 - 2. All keying and cylinders.
 - 3. Furnish all finish hardware necessary to complete the project, whether particularly mentioned or not, and match in quality and finish the material specified.

1.3 WORK NOT INCLUDED

- A. Furnish finish hardware, except for certain noted items, under other sections for the following items:
 - 1. Toilet partitions
 - 2. Windows
 - 3. Washroom accessories
 - 4. Millwork
 - 5. Factory fabricated mechanical or electrical equipment.

1.4 RELATED WORK IN OTHER SECTIONS

- A. Refer to the following sections for these related items:
 - 1. Wood Doors - Section 08211
 - 2. Hollow Doors and Metal Frames - Section 08110
 - 3. Aluminum/FRP Doors and Frames - Section 08410
 - 4. Electrical - Section 16000
- B. Refer to Section 17830 - Door Hardware and Electrical Connections: Coordinate the layout and installation of scheduled electrified door hardware and related access control equipment with required connections to source power junction boxes, low voltage power supplies, detection and monitoring hardware, and fire and detection alarm systems.

1.5 QUALITY ASSURANCE

- A. Manufacturer: Obtain each kind of material (latch and locksets, hinges, closers, etc.) from only one manufacturer of the respective item, although several may be indicated as offering products complying with requirements.

- B. Supplier: A recognized supplier, who has been furnishing Builders Hardware, in the project's vicinity, for a period of not less than 3 years, and who is, or employs an experienced Architectural Hardware Consultant who is a recognized member of the Door and Hardware Institute, available at reasonable times during the course of the work, for consultation about the project's material requirements to the Owner, Architect, and Contractor. All hardware is to be supplied by one dealer.
- C. Fire-Rated Openings: Provide hardware for fire-rated openings in compliance with NFPA 80. Provide only material which has been tested and listed by Underwriter's Laboratories, or other approved Testing Laboratories, for the types and sizes of doors required, and complies with requirements of Door and Frame labels.
- D. Where applicable, all hardware shall be in conformance with the State of New Jersey "Barrier-Free" sub code and CABO/ANSI 117.1

1.6 SUBMITTALS

- A. Submittals shall conform to the requirements specified in Part 1.
- B. The hardware dealer shall submit to the Architect and/or Owner, at least six (6) copies of a detailed Hardware Schedule and Catalog Cut Sheets. These schedules shall be complete and describe in detail the finish hardware for all door openings, or occurrences of finish hardware. These schedules are to be checked and approved by the Contractor and Architect. No hardware is to be ordered nor templates issued, prior to the receipt, by the Hardware Dealer, of these approved schedules. Upon approval of the schedules, the Contractor shall supply the Architect with six (6) final copies.
- C. The finish hardware schedules submitted shall include information as indicated below. These schedules are intended for coordination of the work.
- D. Final finish hardware content: Based on materials indicated, organize schedule into "Hardware Sets", indicating complete destinations of every item required for each door or opening. Include the following information:
 - 1. Type, style, function, size and finish of each item.
 - 2. Name and manufacturer of each item including catalog cuts of each item.
 - 3. Fastenings and other pertinent information.
 - 4. Location of Hardware Set, cross-referenced to indications on drawings, both on floor plan and in door and frame schedule.
 - 5. Explanation of all abbreviations, symbols, codes, etc., contained in the schedule.
 - 6. Mounting locations for hardware.
 - 7. Wiring diagrams and electrical data.
- E. Submittal Sequence: Submit detailed finish hardware scheduled within 30 days of award of contract.

1.7 DELIVERY AND PACKAGING

- A. All items of finish hardware shall be delivered to the project site or applicable fabricators of doors and frames.
- B. Package each item of hardware and each lockset, separately in individual containers, complete with necessary screws, keys, instructions, and installation template for spotting mortising tools. Mark each container with item number corresponding to the number shown on the hardware schedule.
- C. Furnish wrapping for all knobs, handles, and pulls for protection during construction.

1.8 WARRANTY

- A. Guarantee workmanship and material provided against defective manufacture. Repair or replace defective workmanship and material appearing within period of one year after substantial completion.
- B. Provide ten year factory warranty on door closers against defects in material and workmanship from date of occupancy of project.
- C. Provide five year factory warranty on exit devices, locksets and overhead stops against defects in material and workmanship from date of occupancy of project.

1.9 JOB CONDITIONS

- A. Field Service: Hardware Supplier: Assign a competent representative, acceptable to the Architect to be at the jobsite each time a major shipment of finish hardware is received. Such representative shall assist in "checking in" these shipments and shall secure a receipt covering the contents of each shipment. In addition, such representative shall be available for immediate call to the jobsite when, in the opinion of the Architect, their presence is necessary.
- B. Templates: Following approval of the Hardware Schedule by the Architect, furnish and deliver template information to the fabricators of items to which finish hardware is to be applied in ample time to avoid delays in such work of said fabricators. Provide drawings, schedules and detailed information to other trades as necessary for them to accommodate and prepare their work to receive the finish hardware.
- C. Cooperation and Coordination:
 - 1. Cooperate and coordinate work with that of other trades supplying materials or performing work in contact with, connecting to, underlying, or overlaying the work of this Section.
 - 2. Provide complete data of requirements for work of this Section to those other trades whose work is affected by or dependent upon the work of this Section.
 - 3. Furnish all items to be built into other work in ample time to avoid delaying the progress of such work.
 - 4. Examine all drawings covering the work of this Section and refer to all other drawings, including mechanical and electrical drawings, which may affect the work of this Section or require coordination by this trade.
- D. Existing Conditions: Hardware supplier: Verify all existing conditions in the field to ensure compatibility with finish hardware specified in Hardware Sets herein, prior to submission.

Any discrepancies between the existing field conditions and finish hardware specified shall be brought to the attention of the Architect immediately. Hardware supplier shall not order any finish hardware until all discrepancies are rectified and the Architect grants written approval.

1.10 GENERAL

- A. The material called for under this section shall provide for all of the hardware required, whether the same is particularly specified or not. If the hardware for any particular location is not described herein, it should be provided and shall be like that specified for similar locations so far as practicable. If no similar locations are specified, such hardware must be of a suitable type approved by the Architect.
- B. Provide screws of proper type and compatible material, with shields, anchors, plugs, toggle nuts, etc., as required for the attachment of all items of hardware herein specified. All exposed screws shall have flat head, Phillips-type heads and shall be finished to match the item of hardware for which it is intended.

PART 2 - PRODUCTS

2.1 GENERAL REQUIREMENTS

- A. Manufacturers: The following listed material is intended to serve as a guide for the requirements of this project. Hardware manufactured by other than those manufacturers specifically described or listed in this specification will be considered, providing it is equal in every respect. Any request for deviation from this specification as to the manufacturer, type, size, material or finish of any item, or its components, must be submitted to the Architect, in writing, at least ten (10) days from notice to proceed. If no such requests are received and approved in writing, no deviation from this specification will be allowed.
- B. Quality: All hardware shall be uniform in color, and free from any imperfections affecting serviceability, or marring its appearance.
- C. Finishes: As listed in hardware sets and as follows:

Satin Chrome	US26D / 626
Satin Stainless Steel	US32D / 630
Sprayed Aluminum Lacquer	AL / 689
- D. Types of Hardware: The numbers listed in the specification are taken from the catalogs of the following manufacturers, with type of hardware required noted. In each case of the specific size change or lock function requirements, this additional information will be so noted in the Hardware Sets.

2.2 BUTT HINGES

- A. Conform to ANSI A156.1, five-knuckle exposed tip design, bearing type as specified with NRP (non-removable pin) feature at exterior and interior reverse bevel doors with locks.
- B. Unless otherwise scheduled, supply one (1) hinge for every 30" of door height.
- C. Size: 4 1/2" x 4 1/2" for doors up to 3'-0" in width, 5" x 4 1/2" for doors over 3'-0" in width. Provide heavy weight hinges (.180) at all high traffic doors where specified. Provide hinges with Phillips flat-head screws unless specified otherwise.

- D. Width of hinges shall be sufficient to clear trim and wall conditions as shown on the drawings.
- E. Manufacturers:
 - 1. Basis of Design: Provide products manufactured by McKinney, or approved equal.
 - 2. Subject to compliance with indicated requirements, manufacturers offering products which may be incorporated in the work include the following:
 - a. Hager
 - b. Bommer
 - c. or approved equal
- F. Drill 5/32 inch hole and use No. 12, 1-1/4 inch steel threaded to the head wood screws for hinges on wood doors.

2.3 CONTINUOUS HINGES

- A. Heavy duty continuous hinges as appropriate for the type, inset and thickness of door where specified. Coordinate hinge types with the door supplier.
- B. Manufacturers:
 - 1. Basis of Design: Provide products manufactured by McKinney, or approved equal.
 - 2. Subject to compliance with indicated requirements, manufacturers offering products which may be incorporated in the work include the following:
 - a. Pemko
 - b. Select
 - c. or approved equal

2.4 FLUSH BOLTS AND DUSTPROOF STRIKES

- A. Manual and automatic flush bolts as specified in hardware sets. Install with dust proof strike as specified.
- B. Manufacturers:
 - 1. Basis of Design: Provide products manufactured by Rockwood or approved equal.
 - 2. Subject to compliance with indicated requirements, manufacturers offering products which may be incorporated in the work include the following:
 - a. McKinney
 - b. Trimco
 - c. or approved equal

2.5 LOCKSETS

- A. BHMA Certified to ANSI 156.2 Series 4000 Grade 1.
- B. Lever support to be sustained by use of two independent spring cartridges, one for each lever.
- C. Strikes: Non-handed with a curved lip to protect trim but not project more than 1/8" beyond trim, frame or inactive leaf.
- D. Trim: Bi-directional thru-bolted lever operation, non handed levers.
- E. Manufacturers:
 - 1. Schlage ND90 series

2.6 EXIT DEVICES

- A. Certified to meet ANSI/BHMA A156.3 Grade 1 requirements.
- B. Provide exit device series and functions as specified in hardware sets.
- C. All exit devices UL listed for panic. Exit devices for labeled doors UL listed as "Fire Exit Hardware".
- D. Provide keyed removable mullions, as specified in the Hardware Groups.
- E. Manufacturers:
 - 1. Von Duprin 99 series

2.7 DOOR CLOSERS

- A. Closers shall have non-ferrous covers, heavy duty forged steel arms, and separate valves for adjusting backcheck, delayed action, closing and latching cycles and adjustable spring to provide sizes 1 through 6.
- B. Provide non-sized closers, adjustable to meet maximum opening force requirements of ADA.
- C. Provide drop plates, brackets, or adapters for arms as required to suit details.
- D. Mount closers on room side of corridor doors, inside of exterior doors, and stair side of stairway doors. Where possible install closers on door for optimum aesthetics.
- E. Provide closers meeting the requirements of UBC 7-2 and UL 10C positive pressure tests.
- F. Manufacturers:
 - 1. LCN. 4000/4031 SERIES

2.8 DOOR TRIM AND PROTECTION PLATES

- A. Kick plates 10 inches high, mop plates 6 inches high, both by 2 inches or 1 inch less than door width (LDW) as specified. .050 gauge thick bronze, brass, or stainless steel as

specified. Beveled four edges (B4E).

- B. For doors with louvers or narrow bottom rails, kick plate height to be 1 inch less than the dimension shown from the bottom of the door to the bottom of the louver or glass.
- C. Push plates, pull plates, door pulls and miscellaneous door trim as specified in the hardware sets.
- D. Armor plates and door edge plates .050 gauge, size as specified in the hardware sets.
- E. Manufacturers:
 - 1. Basis of Design: Provide products manufactured by Rockwood or approved equal.
 - 2. Subject to compliance with indicated requirements, manufacturers offering products which may be incorporated in the work include the following:
 - a. McKinney
 - b. Trimco
 - c. or approved equal

2.9 DOOR STOPS AND HOLDERS

- A. Conventional Stops:
 - 1. Provide wall stops as applicable for each door leaf except where floor stops are specified in hardware sets, or where conditions require the use of an overhead stop.
 - 2. Provide convex or concave design as indicated.
 - 3. Manufacturers:
 - a. Basis of Design: Provide products manufactured by Rockwood or approved equal.
 - b. Subject to compliance with indicated requirements, manufacturers offering products which may be incorporated in the work include the following:
 - 1. McKinney
 - 2. Trimco
 - 3. or approved equal
- B. Overhead Stops:
 - 1. Provide as indicated in hardware sets.
 - 2. Manufacturers:
 - a. Basis of Design: Provide products manufactured by Glynn Johnson or approved equal.
 - b. Subject to compliance with indicated requirements, manufacturers offering products which may be incorporated in the work include the following:
 - 1. Sargent
 - 2. Rixson
 - 3. or approved equal
- C. Magnetic Holders:
 - 1. Manufacturers:

- a. Basis of Design: Provide products manufactured by Rixson or approved equal.
- b. Subject to compliance with indicated requirements, manufacturers offering products which may be incorporated in the work include the following:
 1. Sargent
 2. LCN
 3. or approved equal

2.10 THRESHOLDS AND GASKETING

- A. Provide continuous gasketing on exterior doors and smoke, light, or sound seals on interior doors where indicated or scheduled. Provide only those units where resilient or flexible seal strip is easily replaceable and readily available from stocks maintained by manufacturer.
- B. Provide threshold units not less than 4" wide, formed to accommodate change in floor elevation where indicated, fabricated to accommodate door hardware and to fit door frames. All threshold units shall comply with the Americans with Disabilities Act (ADA.).
- C. Manufacturers:
 1. Basis of Design: Provide products manufactured by Pemko or approved equal.
 2. Subject to compliance with indicated requirements, manufacturers offering products which may be incorporated in the work include the following:
 - a. McKinney
 - b. Zero
 - c. or approved equal

2.11 SILENCERS

- A. Furnish door silencers at all openings without gasketing. Provide two at each pair of doors and three for each single door.
- B. Manufacturers:
 1. Basis of Design: Provide products manufactured by Rockwood or approved equal.
 2. Subject to compliance with indicated requirements, manufacturers offering products which may be incorporated in the work include the following:
 - a. McKinney
 - b. Trimco
 - c. or approved equal

2.12 KEYS AND KEYING

- A. All cylinders are to be keyed to an existing Schlage Key System, per the instructions of the Architect and/or the Owner. Exterior doors to be Controlled Access Everest Primus full size interchangeable cores. Interior doors are to be Everest Restricted keyway full size interchangeable cores. Provide temporary construction cores for use during the construction period.
- B. Manufacturers:
 1. Basis of Design: Provide products manufactured by Schlage.

- C. Furnish:
- Ten (10) grand master keys
 - Five (5) master keys per section
 - Three (3) keys per cylinder
 - Two (2) control keys for core removal
 - One (1) extra key for keyed alike locks
- D. All cylinders are to be construction master keyed for use during the construction period. Provide Ten (10) construction master keys and Two (2) construction control keys. Permanent cores to be installed per the instruction of the Owner.
- E. All cylinders are to be stamped with manufacturers key symbol.
- F. Delivery of keys: Deliver all keys by hand, or via registered mail to the owner or their authorized representative.
- G. Supply one (1) Key Cabinet: The cabinet shall have an approved labeling system, consecutively numbered. For each key hook, furnish a fiber tag of a permanent locking type, approximately 1 ½" in diameter, and shall bear the legend "FILE KEY - MUST NOT BE LOANED" and shall be stamped to correspond with the consecutive numerals on the labels on the hook pockets. The cabinet shall have a receipt holder for each hook, and a sufficient number of receipt forms for recording all keys. The cabinet shall have a cross index for recording keys alphabetically, numerically, and by biting numbers, be complete, and as manufactured by Lund Equipment Co., Inc., Series 1205. The cabinet is to be set up by the manufacturer or distributor.

2.13 HARDWARE SUPPLIER'S RESPONSIBILITY

- A. The finish hardware listed herein shall in no way be construed as a complete hardware schedule and shall be considered as an indication of the finish hardware requirements desired by the Owner. It shall be the finish hardware supplier's responsibility to examine the drawings and door schedule, and provide all necessary or additional hardware as required, but not specified herein. Such items of finish hardware shall be of the same type, quality, and quantity as that scheduled for similar doors used for similar purposes in other parts of the building. A schedule of fabrication and delivery shall be executed to avoid any delay of the entire project.

2.14 HARDWARE SET NUMBERS

- A. All doors shall be equipped with finish hardware of the types listed and in accordance with the following set numbers. The contractor is to refer to the schedule and plans for the total number of each set required. Sets, as listed herein, shall be supplied as complete units and must include all components. No omissions will be accepted.

Manufacturer's List

GJ	Glynn Johnson
IV	Ives
LC	LCN
MK	McKinney
PE	Pemko
RO	Rockwood
RX	Rixson
SC	Schlage
SO	Sonitrol
VD	Von Duprin

Hardware Sets

HARDWARE SET 1

EACH TO RECEIVE:

2	EA	CONTINUOUS HINGE	MCK-25HD x PT x LAR	628	MK
2	EA	POWER TRANSFER	EPT-10	689	VD
1	EA	KEYED MULLION	KR4954	PC	VD
1	EA	MOUNTING BRACKET	MT54	PC	VD
1	EA	EXIT DEVICE	SD-EL-RX-99NL-OP	626	VD
1	EA	EXIT DEVICE	CD-RX-99EO	626	VD
1	EA	POWER SUPPLY	PS914-2RS	600	VD
2	EA	RIM CYLINDER	20-057T	626	SC
1	EA	MORTISE CYL	26-091T XQ11-948	626	SC
1	EA	MORTISE CYL.	26-091T	626	SC
4	EA	CONSTRUCTION CORE	23-030 ICX	626	SC
4	EA	PERMANENT CORE	20-740	626	SC
2	EA	VANDAL TRIM	VR900 SERIES	630	IV
2	EA	DOOR CLOSER	4111-SPRING CUSH	689	LC
2	EA	SPACER KIT	4110-61	689	LC
2	EA	SUPPORT BRACKET	4110-30	689	LC
2	EA	KICK PLATE	8" x 2" LDW x .050" x B4E	630	RO
1	EA	THRESHOLD	271A x LAR	628	PE
2	EA	DOOR SWEEP	18061CP x LAR	628	PE
1	EA	DRIP CAP	346C x DOOR WIDTH + 4"	628	PE
2	EA	STATUS SWITCH	1078W		SO
1	EA	WIRING DIAGRAM	COMPLETE WITH POINT TO POINT		VD
1	SET	GASKET	BY FRAME MANUFACTURER (HEAD & JAMBS)		
1	SET	GASKET	BY DOOR MANUFACTURER (MEETING STILES)		

ELECTRICAL OPENING TO OPERATE AS FOLLOWS: OUTSIDE, CARD READER (BY OTHERS) OR TIMER (BY OTHERS) SIGNALS POWER SUPPLY TO RETRACT EXIT DEVICE LATCHES ALLOWING ENTRY BY DOOR PULL. INSIDE, FREE EGRESS AT ALL TIMES BY EXIT DEVICE. SWITCH IN RAIL SIGNALS ACCESS CONTROL SYSTEM OF AUTHORIZED EXIT. SEE ELEVATION #1.

HARDWARE SET 1A

EACH TO RECEIVE:

2	EA	CONTINUOUS HINGE	MCK-25HD x LAR	628	MK
1	EA	KEYED MULLION	KR4954	689	VD
1	EA	MOUNTING BRACKET	MT54 Door 129C	PC	VD
1	EA	EXIT DEVICE	SD-EL-RX-99NL-OP	626	VD
1	EA	EXIT DEVICE	CD-RX-99EO	626	VD
1	EA	POWER SUPPLY	PS914-2RS	600	VD
2	EA	RIM CYLINDER	20-057T	626	SC
1	EA	MORTISE CYL	26-091T XQ11-948	626	SC
1	EA	MORTISE CYL.	26-091T	626	SC
4	EA	CONSTRUCTION CORE	23-030 ICX	626	SC
4	EA	PERMANENT CORE	20-740	626	SC
2	EA	VANDAL TRIM	VR900 SERIES	630	IV
2	EA	DOOR CLOSER	4111-SPRING CUSH	689	LC
2	EA	SPACER KIT	4110-61	689	LC
2	EA	SUPPORT BRACKET	4110-30	689	LC
2	EA	KICK PLATE	8" x 2" LDW x .050" x B4E	630	RO
1	EA	THRESHOLD	271A x LAR	628	PE
2	EA	DOOR SWEEP	18061CP x LAR	628	PE
1	EA	DRIP CAP	346C x DOOR WIDTH + 4"	628	PE
2	EA	STATUS SWITCH	1078W		SO
1	SET	GASKET	BY FRAME MANUFACTURER (HEAD & JAMBS)		
1	SET	GASKET	BY DOOR MANUFACTURER (MEETING STILES)		

HARDWARE SET 1B

EACH TO RECEIVE:

2	EA	CONTINUOUS HINGE	MCK-25HD x PT x LAR	628	MK
2	EA	POWER TRANSFER	EPT-10	689	VD
1	EA	KEYED MULLION	KR4954	689	VD
1	EA	EXIT DEVICE	SD-EL-RX-99NL-OP	626	VD
1	EA	EXIT DEVICE	CD-RX-99EO	626	VD
1	EA	POWER SUPPLY	PS914-2RS	600	VD
2	EA	RIM CYLINDER	20-057T	626	SC
1	EA	MORTISE CYL	26-091T XQ11-948	626	SC
1	EA	MORTISE CYL.	26-091T	626	SC
4	EA	CONSTRUCTION CORE	23-030 ICX	626	SC
4	EA	PERMANENT CORE	20-740	626	SC
2	EA	VANDAL TRIM	VR900 SERIES	630	IV
2	EA	DOOR CLOSER	4111-SPRING CUSH	689	LC
2	EA	SPACER KIT	4110-61	689	LC
2	EA	SUPPORT BRACKET	4110-30	689	LC
2	EA	KICK PLATE	8" x 2" LDW x .050" x B4E	630	RO
2	EA	STATUS SWITCH	1078W		SO
1	EA	WIRING DIAGRAM	COMPLETE WITH POINT TO POINT		VD
1	SET	GASKET	BY FRAME MANUFACTURER (HEAD & JAMBS)		
1	SET	GASKET	BY DOOR MANUFACTURER (MEETING STILES)		

ELECTRICAL OPENING TO OPERATE AS FOLLOWS: OUTSIDE, CARD READER (BY OTHERS) OR TIMER (BY OTHERS) SIGNALS POWER SUPPLY TO RETRACT EXIT DEVICE LATCHES ALLOWING ENTRY BY DOOR PULL. INSIDE, FREE EGRESS AT ALL TIMES BY EXIT DEVICE. SWITCH IN RAIL SIGNALS ACCESS CONTROL SYSTEM OF AUTHORIZED EXIT. SEE ELEVATION #1.

HARDWARE SET 2

EACH TO RECEIVE:

1	EA	CONTINUOUS HINGE	MCK-25HD x PT x LAR	628	MK
1	EA	POWER TRANSFER	EPT-10	689	VD
1	EA	EXIT DEVICE	SD-EL-RX-99NL-OP	626	VD
1	EA	POWER SUPPLY	PS914-2RS	600	VD
2	EA	RIM CYLINDER	20-057T	626	SC
2	EA	CONSTRUCTION CORE	23-030 ICX	626	SC
2	EA	PERMANENT CORE	20-740	626	SC
1	EA	VANDAL TRIM	VR900 SERIES	630	IV
1	EA	DOOR CLOSER	4111-SPRING CUSH	689	LC
1	EA	SPACER KIT	4110-61	689	LC
1	EA	SUPPORT BRACKET	4110-30	689	LC
1	EA	KICK PLATE	8" x 2" LDW x .050" x B4E	630	RO
1	EA	THRESHOLD	271A x LAR	628	PE
1	EA	DOOR SWEEP	18061CP x LAR	628	PE
1	EA	DRIP CAP	346C x DOOR WIDTH + 4"	628	PE
1	EA	STATUS SWITCH	1078W		SO
1	EA	WIRING DIAGRAM	COMPLETE WITH POINT TO POINT		VD
1	SET	GASKET	BY FRAME MANUFACTURER (HEAD & JAMBS)		

ELECTRICAL OPENING TO OPERATE AS FOLLOWS: OUTSIDE, CARD READER (BY OTHERS) OR TIMER (BY OTHERS) SIGNALS POWER SUPPLY TO RETRACT EXIT DEVICE LATCH ALLOWING ENTRY BY DOOR PULL. INSIDE, FREE EGRESS AT ALL TIMES BY EXIT DEVICE. SWITCH IN RAIL SIGNALS ACCESS CONTROL SYSTEM OF AUTHORIZED EXIT. SEE ELEVATION #2.

HARDWARE SET 2A

EACH TO RECEIVE:

1	EA	CONTINUOUS HINGE	MCK-25HD x LAR	628	MK
1	EA	EXIT DEVICE	CD-99NL-OP	626	VD
1	EA	RIM CYLINDER	20-057T	626	SC
1	EA	MORTISE CYL	20-091T XQ11-948	626	SC
2	EA	CONSTRUCTION CORE	23-030 ICX	PC	SC
2	EA	PERMANENT CORE	20-740	626	SC
1	EA	VANDAL TRIM	VR900 SERIES	630	IV
1	EA	DOOR CLOSER	4111-SPRING CUSH	689	LC
1	EA	SPACER KIT	4110-61	689	LC
1	EA	SUPPORT BRACKET	4110-30	689	LC
1	EA	KICK PLATE	8" x 2" LDW x .050" x B4E	630	RO
1	EA	THRESHOLD	271A x LAR	628	PE
1	EA	DOOR SWEEP	18061CP x LAR	628	PE
1	EA	DRIP CAP	346C x DOOR WIDTH + 4"	628	PE
1	EA	STATUS SWITCH	1078W		SO
1	SET	GASKET	BY FRAME MANUFACTURER (HEAD & JAMBS)		

HARDWARE SET 2B

EACH TO RECEIVE:

1	EA	CONTINUOUS HINGE	MCK-25HD x PT x LAR	628	MK
1	EA	POWER TRANSFER	EPT-10	689	VD
1	EA	EXIT DEVICE	SD-EL-RX-99NLF-OP	626	VD
1	EA	POWER SUPPLY	PS914-2RS-FA	600	VD
2	EA	RIM CYLINDER	20-057T	626	SC
2	EA	CONST CORE	23-030 ICX	PC	SC
2	EA	PERMANENT CORE	20-740	626	SC
1	EA	VANDAL TRIM	VR900 SERIES	630	IV
1	EA	DOOR CLOSER	4111-SPRING CUSH	689	LC
1	EA	KICK PLATE	8" x 2" LDW x .050" x B4E	630	RO
1	EA	THRESHOLD	271A x LAR	628	PE
1	EA	DOOR SWEEP	18061CP x LAR	628	PE
1	SET	GASKET	303AS (HEAD & JAMBS)	628	PE
1	EA	DRIP CAP	346C x DOOR WIDTH + 4"	628	PE
1	EA	STATUS SWITCH	1078W		SO
1	EA	WIRING DIAGRAM	COMPLETE WITH POINT TO POINT		VD

ELECTRICAL OPENING TO OPERATE AS FOLLOWS: OUTSIDE, CARD READER (BY OTHERS) OR TIMER (BY OTHERS) SIGNALS POWER SUPPLY TO RETRACT EXIT DEVICE LATCH ALLOWING ENTRY BY DOOR PULL. INSIDE, FREE EGRESS AT ALL TIMES BY EXIT DEVICE. SWITCH IN RAIL SIGNALS ACCESS CONTROL SYSTEM OF AUTHORIZED EXIT. SEE ELEVATION #2.

HARDWARE SET 3

EACH TO RECEIVE:

2	EA	CONTINUOUS HINGE	MCK-25HD x LAR	628	MK
2	EA	PUSH/PULL BAR	BF16847 x TYPE 12 MOUNT	630	RO
2	EA	DOOR CLOSER	4111DEL-H SPRING CUSH	689	LC
2	EA	SPACER KIT	4110-61	689	LC
2	EA	SUPPORT BRACKET	4110-30	689	LC
2	EA	KICK PLATE	8" x 1" LDW x .050" x B4E	630	RO
1	SET	GASKET	BY FRAME MANUFACTURER (HEAD & JAMBS)		
1	SET	GASKET	BY DOOR MANUFACTURER (MEETING STILES)		

HARDWARE SET 4

EACH TO RECEIVE:

1	EA	ALL HARDWARE	BY DOOR MANUFACTURER		
---	----	--------------	----------------------	--	--

HARDWARE SET 5

EACH TO RECEIVE:

3 EA BUTT HINGES	TA786-ET 4.5 x 4.5 NRP	652	MK
1 EA EXIT DEVICE	99L-F x 996L	626	VD
1 EA RIM CYLINDER	20-057T	626	SC
1 EA PERMANENT CORE	23-030 x RESTRICTED KWY	626	SC
1 EA DOOR CLOSER	4111 REG	689	LC
1 EA KICK PLATE	8" x 2" LDW x .050" x B4E	630	RO
1 EA WALL STOP	400	626	RO
1 SET GASKETING	S88D (HEAD & JAMBS)		PE

HARDWARE SET 6

EACH TO RECEIVE:

3 EA BUTT HINGES	TA786-ET 4.5 x 4.5	652	MK
1 EA EXIT DEVICE	99L-BE-F x 996L-BE	626	VD
1 EA DOOR CLOSER	4011 REG	689	LC
1 EA KICK PLATE	8" x 2" LDW x .050" x B4E	630	RO
1 EA MAG HOLD OPEN	SEM7840	689	LC
1 SET GASKETING	S88D (HEAD & JAMBS)		PE

HARDWARE SET 7

EACH TO RECEIVE:

3 EA BUTT HINGES	TA786-ET 4.5 x 4.5 NRP	652	MK
1 EA EXIT DEVICE	99L-2 SI x 996L	626	VD
2 EA RIM CYLINDER	20-057T	626	SC
2 EA PERMANENT CORE	23-030 x RESTRICTED KWY	626	SC
1 EA DOOR CLOSER	4111	689	LC
1 EA KICK PLATE	8" x 2" LDW x .050" x B4E	630	RO
1 EA WALL STOP	400	626	RO
3 EA SILENCERS		608	RO

HARDWARE SET 8

EACH TO RECEIVE:

3 EA BUTT HINGES	TA714-ET 4.5 x 4 NRP	652	MK
1 EA STOREROOM LOCK	ND96TD x OME x 10-025	626	SC
1 EA PERMANENT CORE	23-030 x RESTRICTED KWY	626	SC
1 EA DOOR CLOSER	4031-EDA	689	LC
1 EA KICK PLATE	8" x 2" LDW x .050" x B4E	630	RO
1 EA WALL STOP	400	626	RO
1 SET GASKETING	S88D (HEAD & JAMBS)		PE

HARDWARE SET 8A

EACH TO RECEIVE:

3	EA	BUTT HINGES	TA714-ET 4.5 x 4 NRP	652	MK
1	EA	POWER TRANSFER	EPT-10	689	VD
1	EA	ELECTRIC LOCK	ND96TDEU x OME x 10-025	626	SC
1	EA	PERMANENT CORE	23-030 x RESTRICTED KWY	626	SC
1	EA	DOOR CLOSER	4031-EDA	689	LC
1	EA	KICK PLATE	8" x 2" LDW x .050" x B4E	630	RO
1	EA	WALL STOP	400	626	RO
1	SET	GASKETING	S88D (HEAD & JAMBS)		PE
1	EA	POWER SUPPLY	PS914-2RS	600	VD
1	EA	STATUS SWITCH	1078W		SO
1	EA	MOTION SENSOR	XMS		SU
1	EA	WIRING DIAGRAM	COMPLETE WITH POINT TO POINT		VD

ELECTRICAL OPENING TO OPERATE AS FOLLOWS: OUTSIDE, CARD READER (BY OTHERS) SIGNALS POWER SUPPLY TO RELEASE FAIL SECURE LOCKSET ALLOWING ENTRY BY LEVER. INSIDE, FREE EGRESS AT ALL TIMES BY LEVER. MOTION SENSOR SIGNALS ACCESS CONTROL SYSTEM OF AUTHORIZED EXIT. SEE ELEVATION #3.

HARDWARE SET 9

EACH TO RECEIVE:

3	EA	BUTT HINGES	TA714-ET 4.5 x 4	652	MK
1	EA	CLASSROOM LOCK	ND94TD x OME x 10-025	626	SC
1	EA	PERMANENT CORE	23-030 x RESTRICTED KWY	626	SC
1	EA	DOOR CLOSER	4031-3077 REG	689	LC
1	EA	KICK PLATE	8" x 2" LDW x .050" x B4E	630	RO
1	EA	WALL STOP	400	626	RO
1	SET	GASKETING	S88D (HEAD & JAMBS)		PE

HARDWARE SET 10

EACH TO RECEIVE:

3	EA	BUTT HINGES	TA714-ET 4.5 x 4	652	MK
1	EA	STOREROOM LOCK	ND96TD x OME x 10-025	626	SC
1	EA	PERMANENT CORE	23-030 x RESTRICTED KWY	626	SC
1	EA	DOOR CLOSER	4031-3077 REG	689	LC
1	EA	KICK PLATE	8" x 2" LDW x .050" x B4E	630	RO
1	EA	WALL STOP	400	626	RO
1	SET	GASKETING	S88D (HEAD & JAMBS)		PE

HARDWARE SET 11

EACH TO RECEIVE:

3 EA BUTT HINGES	TA714-ET 4.5 x 4	652	MK
1 EA CLASSROOM LOCK	ND94TD x OME x 10-025	626	SC
1 EA PERMANENT CORE	23-030 x RESTRICTED KWY	626	SC
1 EA DOOR CLOSER	4031-3077 REG	689	LC
1 EA KICK PLATE	8" x 2" LDW x .050" x B4E	630	RO
1 EA WALL STOP	400	626	RO
1 SET GASKETING	S88D (HEAD & JAMBS)		PE

HARDWARE SET 12

EACH TO RECEIVE:

6 EA BUTT HINGES	TA714-ET 4.5 x 4 NRP	652	MK
1 SETCONST LTCH F BOLT	FB51P	626	IV
1 EA DUST PROOF STK.	DP2	626	IV
1 EA STOREROOM LOCK	ND96TD x OME x 10-025	626	SC
1 EA PERMANENT CORE	23-030 x RESTRICTED KWY	626	SC
1 EA COORDINATOR	COR SERIES x MB BRKTS.	600	IV
2 EA DOOR CLOSER	4031-CUSH	689	LC
2 EA KICK PLATE	8" x 1" LDW x .050" x B4E	630	RO
1 SET GASKETING	S88D (HEAD & JAMBS)		PE
1 EA ASTRAGAL	S77 C x LAR		PE

HARDWARE SET 13

EACH TO RECEIVE:

6 EA BUTT HINGES	TA714-ET 4.5 x 4 NRP	652	MK
1 SET AUTO FLUSH BOLT	FB51P	626	IV
1 EA DUST PROOF STK.	DP2	626	IV
1 EA STOREROOM LOCK	ND96TD x OME x 10-025	626	SC
1 EA PERMANENT CORE	23-030 x RESTRICTED KWY	626	SC
1 EA COORDINATOR	COR SERIES x MB BRKTS.	600	IV
2 EA DOOR CLOSER	4031-EDA	689	LC
2 EA KICK PLATE	8" x 1" LDW x .050" x B4E	630	RO
2 EA WALL STOP	400	626	RO
1 SET GASKETING	S88D (HEAD & JAMBS)		PE
1 EA ASTRAGAL	S77 C x LAR		PE

HARDWARE SET 14

EACH TO RECEIVE:

3 EA BUTT HINGES	TA714-ET 4.5 x 4	652	MK
1 EA PRIVACY LOCK	ND40S x OME x 10-025	626	SC
1 EA DOOR CLOSER	4031-3077 REG	689	LC
1 EA KICK PLATE	8" x 2" LDW x .050" x B4E	630	RO
1 EA WALL STOP	403	626	RO
3 EA SILENCERS		608	RO

HARDWARE SET 15

EACH TO RECEIVE:

6 EA BUTT HINGES	TA714-ET 4.5 x 4 NRP	652	MK
1 SET AUTO FLUSH BOLT	FB51P	626	IV
1 EA DUST PROOF STK.	DP2	626	IV
1 EA STOREROOM LOCK	ND96TD x RHO x 10-025	626	SC
1 EA PERMANENT CORE	23-030 x RESTRICTED KWY	626	SC
1 EA COORDINATOR	COR SERIES x MB BRKTS.	600	IV 2 EA
OVERHEAD STOP	450S	630	GJ
2 EA KICK PLATE	8" x 1" LDW x .050" x B4E	630	RO
2 EA SILENCERS		608	RO

HARDWARE SET 16

EACH TO RECEIVE:

6 EA BUTT HINGES	TA786-ET 4.5 x 4.5 NRP	652	MK
1 EA EXIT DEVICE	CD-9949EO	626	VD
1 EA EXIT DEVICE	CD-9975L X 576A		
1 EA MORTISE CYLINDER	26-091T	626	SC
2 EA MORTISE CYL	26-091T XQ11-948	626	SC
1 EA RIM CYLINDER	20-057T		
4 EA CONSTRUCTION CORE	23-030ICX	PC	SC
4 EA PERMANENT CORE	23-030 x RESTRICTED KWY	626	SC
2 EA DOOR CLOSER	4111 CUSH	689	LC
2 EA KICK PLATE	8" x 1" LDW x .050" x B4E	630	RO
2 EA ASTRAGAL	18041CNB x LAR	628	PE
1 EA THRESHOLD	151A x LAR	628	PE
1 SET GASKETING	332CR (HEAD & JAMBS)	628	PE
1 SET GASKETING	S88D (HEAD & JAMBS)		PE
2 EA DOOR BOTTOM	4131CRL x LAR	628	PE

HARDWARE SET 17 (NOT USED)

HARDWARE SET 18

EACH TO RECEIVE:

3 EA BUTT HINGES	TA714-ET 4.5 x 4 NRP	652	MK
1 EA SECURITY LOCK	ND93TD x OME x XN12-035 10-025	626	SC
2 EA PERMANENT CORE	23-030 x RESTRICTED KWY	626	SC
1 EA DOOR CLOSER	4031-EDA	689	LC
1 EA KICK PLATE	8" x 2" LDW x .050" x B4E	630	RO
1 EA STOP / HOLDER	494	626	RO
3 EA SILENCERS		608	RO

HARDWARE SET 19

EACH TO RECEIVE:

3	EA BUTT HINGES	TA714-ET 4.5 x 4	652	MK
1	EA SECURITY LOCK	ND93TD x OME x XN12-035 10-025	626	SC
2	EA PERMANENT CORE	23-030 x RESTRICTED KWY	626	SC
1	EA DOOR CLOSER	4031-3077 REG	689	LC
1	EA KICK PLATE	8" x 2" LDW x .050" x B4E	630	RO
1	EA WALL STOP	400	626	RO
3	EA SILENCERS		608	RO

HARDWARE SET 20

EACH TO RECEIVE:

3	EA BUTT HINGES	TA714-ET 4.5 x 4	652	MK
1	EA SECURITY LOCK	ND93TD x OME x XN12-035 10-025	626	SC
2	EA PERMANENT CORE	23-030 x RESTRICTED KWY	626	SC
1	EA DOOR CLOSER	4031-3077 REG	689	LC
1	EA KICK PLATE	8" x 2" LDW x .050" x B4E	630	RO
1	EA STOP / HOLDER	494	626	RO
3	EA SILENCERS		608	RO

HARDWARE SET 21

EACH TO RECEIVE:

3	EA BUTT HINGES	TA714-ET 4.5 x 4	652	MK
1	EA CLASSROOM LOCK	ND94TD x OME x 10-025	626	SC
1	EA PERMANENT CORE	23-030 x RESTRICTED KWY	626	SC
1	EA WALL STOP	400	626	RO
3	EA SILENCERS		608	RO

HARDWARE SET 22

EACH TO RECEIVE:

3	EA BUTT HINGES	TA786-ET 4.5 x 4.5	652	MK
1	EA CLASSROOM LOCK	ND94TD x OME x 10-025	626	SC
1	EA PERMANENT CORE	23-030 x RESTRICTED KWY	626	SC
1	EA DOOR CLOSER	4031-EDA	689	LC
1	EA KICK PLATE	8" x 2" LDW x .050" x B4E	630	RO
1	EA WALL STOP	400	626	RO
3	EA SILENCERS		608	RO

HARDWARE SET 23 (NOT USED)

HARDWARE SET 24

EACH TO RECEIVE:

3 EA BUTT HINGES	TA714-ET 4.5 x 4 NRP	652	MK
1 EA SECURITY LOCK	ND93TD x XN12-035 OME x 10-025	626	SC
2 EA PERMANENT CORE	23-030 x RESTRICTED KWY	626	SC
1 EA DOOR CLOSER	4031-EDA	689	LC
1 EA KICK PLATE	8" x 2" LDW x .050" x B4E	630	RO
1 EA STOP / HOLDER	494	626	RO
1 EA THRESHOLD	151A x LAR	628	PE
1 SET GASKETING	332CR (HEAD & JAMBS)	628	PE
1 SET GASKETING	S88D (HEAD & JAMBS)		PE
1 EA DOOR BOTTOM	4131CRL x LAR	628	PE

HARDWARE SET 25 (NOT USED)**HARDWARE SET 26**

EACH TO RECEIVE:

3 EA BUTT HINGES	TA714-ET 4.5 x 4	652	MK
1 EA PASSAGE SET	ND10S x OME x 10-025	626	SC
1 EA WALL STOP	400	626	RO
3 EA SILENCERS		608	RO

HARDWARE SET 27

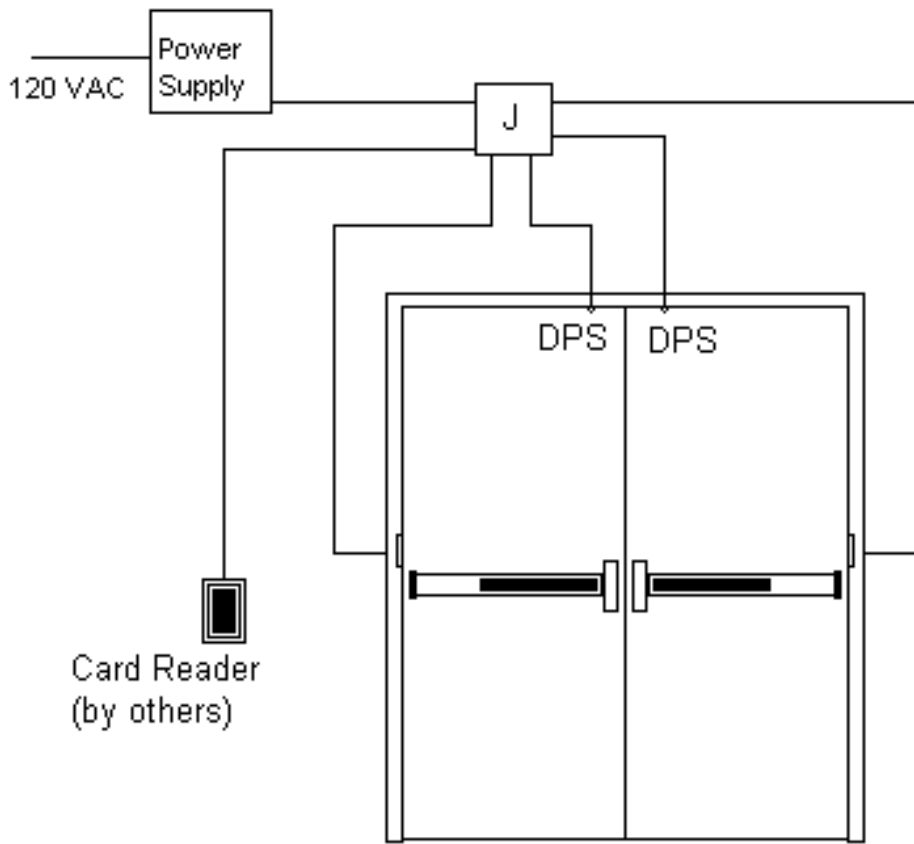
EACH TO RECEIVE:

4 EA BUTT HINGES	TA714-ET 4.5 x 4	652	MK
1 EA FLUSH BOLT	557	626	RO
1 EA DEADBOLT	L460T	626	SC
1 EA PERMANENT CORE	23-030 x RESTRICTED KWY	626	SC
2 EA SILENCERS		608	RO

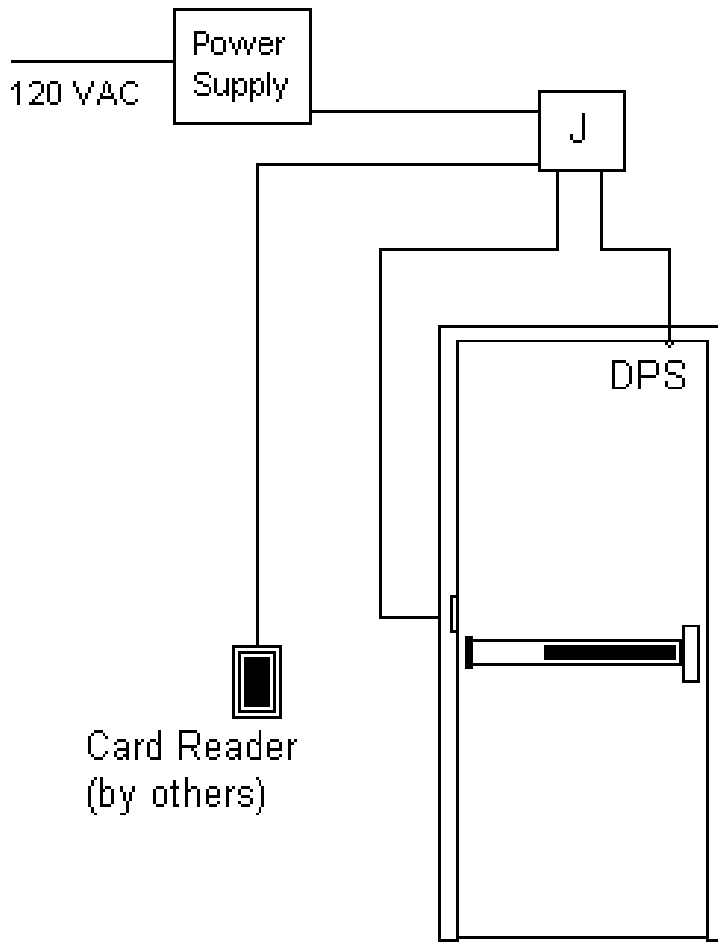
HARDWARE SET 28

EACH TO RECEIVE:

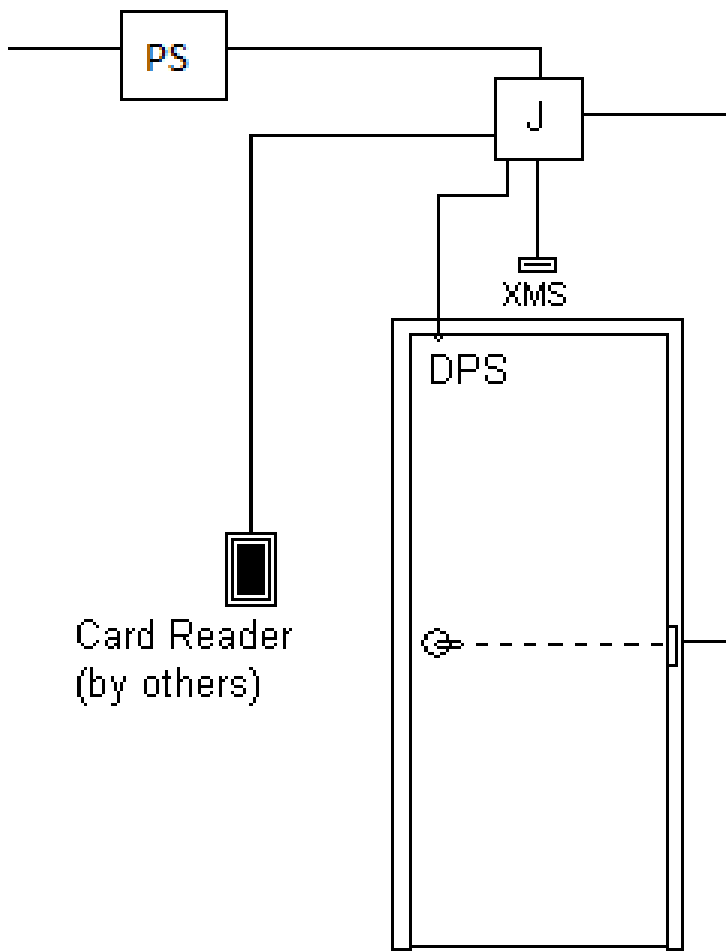
1 EA KEY CABINET	AS SPECIFIED	600	
------------------	--------------	-----	--



Elevation #1



Elevation #2



Elevation #3

PART 3 - EXECUTION

3.1 INSTALLATION

- A. Mount Hardware units at heights indicated in “recommended locations for Builders Hardware for Standard Steel Doors and Frames”, by the Door and Hardware Institute, except as specifically indicated, required to comply with governing regulations, or may be otherwise directed by the Architect.
- B. Install each hardware item in compliance with the manufacturer’s instruction and recommendations. Wherever cutting and fitting is required to install finish hardware onto or into surfaces which are later to be painted or finished in another way, coordinate removal, storage and reinstallation or application of surface protection with finishing work specified in the Division 9 sections. Do not install surface-mounted items until finishes have been completed on the substrate.
- C. Set units level, plumb and true to line and location. Adjust and reinforce the attachment substrate as necessary for proper installation and operation.

3.2 ADJUST AND CLEAN

- A. Adjust and check each operating item of finish hardware and each door to ensure proper operation or function of every unit. Replace units which cannot be adjusted to operate freely and smoothly as intended for the application made.
- B. Final adjustment: Wherever finish hardware installation is made more than one month prior to acceptance of occupancy of a space or area, return to the work site during the week prior to acceptance or occupancy, and make final check and adjustment of all finish hardware items in such space or area. Clean operating items as necessary to restore proper function and finish of finish hardware and doors. Adjust door control devices to compensate for final operation of heating and ventilating equipment.
- C. Instruct Owner’s personnel in proper adjustment and maintenance of finish hardware finishes during the final adjustment of finish hardware.
- D. Continued Maintenance Service: Approximately six months after the acceptance of finish hardware in each area, the installer, accompanied by the representative of the lock and latch manufacturer shall return to the project and re-adjust every item of finish hardware to restore proper function of doors and finish hardware. Consult with and instruct Owner’s personnel in recommended additions to the maintenance procedures. Replace finish hardware items that have deteriorated or failed due to faulty design, materials or installation of finish hardware units.

END OF SECTION 08700

ATTACHMENT 2.9

IDENTIFICATION OF BIDDER'S REQUIRED KEY TEAM MEMBERS

LIST ALL REQUIRED KEY TEAM MEMBERS as indicated in section 3.2 of the RFP ("Identification and Qualification of Bidder's Key Team Members")

Project Manager (the individual designated by the Bidder to serve as its representative and be available for general consultation throughout the Project):

Superintendent (the individual designated by the Bidder who serves as the Authority's **on-site** point of contact in all matters relating to the Work including, but not limited to, scheduling of work, supervision of subcontractors, testing and utility interruptions and connections):

~~**Safety Coordinator/Inspector** (the individual identified by the Bidder who performs safety management duties required of the Bidder, and serves as the Authority's point of contact for all matters relating to project safety):~~

Identification of Safety Coordinator/Inspector NOT required for this Procurement

~~**Quality Assurance/Quality Control Coordinator** (the individual identified by the Bidder who shall be responsible for all construction quality issues, and shall perform coordination between the Bidder, subcontractors, and any independent testing labs, and shall have the authority to act for the Bidder in all construction quality control matters):~~

Identification of QA/QC Coordinator NOT required for this Procurement

Affirmative Action Coordinator (the individual identified by the Bidder who shall serve as a liaison with the Authority's Compliance Inspector and who shall be responsible for coordinating the firm's affirmative action program, maintaining all required records and forms):

ATTACHMENT 2.10

BIDDER'S TECHNICAL PROPOSAL CERTIFICATION

I SWEAR AND AFFIRM that all statements and information contained in the Technical Proposal submitted by _____ are true and correct; and all such statements are made with full knowledge that the NJSDA relies upon the truth of the statements contained in the Proposal.

I SWEAR AND AFFIRM that the individual named as:

Superintendent: _____ *and*

Safety Coordinator: _____

is or will be available to perform their designated functions on this Project, without any conflicts or overlap with other SDA projects, if the contract is awarded to the above-named firm.

Signature of Principal

Print or Type Name

Title

Sworn and subscribed to before me

this _____ day of _____, 20__.

Notary Public of _____

My commission expires: _____, 20__.

Signature of Notary Public