

BIANNUAL REPORT

OCTOBER 1, 2024
THROUGH
MARCH 31, 2025



NEW JERSEY
SCHOOLS DEVELOPMENT AUTHORITY



New Jersey Schools Development Authority

The New Jersey Schools Development Authority (SDA or the Authority) fully funds and manages the new construction, modernization, and renovation of school facilities projects in 31 school districts known as SDA Districts. The Authority also makes grants available to Regular Operating Districts (RODs) throughout New Jersey for facilities projects approved by the New Jersey Department of Education (NJDOE).

Mission

Our mission is to deliver high-quality educational facilities that best meet the needs of the students of the State of New Jersey. While providing efficiently designed facilities that enhance the academic environment, we promote fiscal responsibility in the management of taxpayers' resources.

Executive Staff



Manuel Da Silva
*Chief Executive
Officer*



Laurette Pitts
*Vice President
and Chief
Financial Officer*



Ramy Kamel
*Vice President,
Program and
Construction
Operations*



Janice Venables
*Vice President,
Corporate
Governance*

SDA Board of Directors

Public Board Members

Robert Nixon, SDA Chairman

Director of Government Affairs, NJ State Policeman's Benevolent Association

John Capo

*Director, Bricklayers and Allied Craftworkers,
Administrative District Council of NJ, Locals 4 & 5*

Joseph M. DeCotiis

Managing Partner, DeCotiis, FitzPatrick, Cole & Giblin, LLP

Daniel Gumble

Business Representative, I.B.E.W. Local 164

Lester Lewis-Powder

Executive Director, Let's Celebrate, Inc.

Michael Maloney

Retired Business Manager of Plumbers and Pipefitters Local Union #9

Mario S. Vargas

Broker/Owner, Senior Health Navigators, LLC

Nicole Vecchione

Director of Research, Laborers' Eastern Region Organizing Fund

Ex-Officio Members

Kevin Dehmer

Commissioner, New Jersey Department of Education

Jacquelyn A. Suárez

Commissioner, New Jersey Department of Community Affairs

Tim Sullivan

Chief Executive Officer, New Jersey Economic Development Authority

Elizabeth Maher Muoio

State Treasurer, New Jersey Department of the Treasury

TABLE OF CONTENTS

SDA EXECUTIVE STAFF	2
SDA BOARD OF DIRECTORS	3
MESSAGE FROM THE BOARD CHAIRMAN AND THE CHIEF EXECUTIVE OFFICER.....	5
SCHOOL CONSTRUCTION THROUGHOUT THE STATE	6
SDA Celebrates the Cleveland Street Elementary School Project.....	6
Capital Projects in Construction	7
Status of 2022 Capital Projects.....	8
New Construction, Design and Management Contracts	10
Early Site Preparation Readies Sites for Construction	11
Emergent Project Program.....	11
Capital Maintenance and Emergent Grant Funding.....	13
ROD Grant Program.....	14
School Facilities Projects Approved by NJDOE	15
Metropolitan Statistical Comparison	16
BENEFITTING NEW JERSEY BUSINESSES	17
Training Small Businesses to do Business with SDA	17
Small Business Goals	18
Minority/Female Workforce Hours	19
Supporting Construction Jobs	20
SDA FINANCES	22
COMMUNITY OUTREACH.....	23

MESSAGE FROM THE BOARD CHAIRMAN AND THE CHIEF EXECUTIVE OFFICER

The New Jersey Schools Development Authority (SDA) is proud of its recent accomplishments, contributing to students' academic success by elevating the physical environment available in New Jersey school districts. The Authority and its contracting partners continue to lessen the facilities needs that exist as we work to construct, expand, and improve New Jersey's educational infrastructure.

Construction of the new Esther Salas Middle School project in Union City continues at a rapid pace as it remains on schedule to open to students this Fall. Concurrently, planning and construction activities continue on capital projects in SDA Districts. This reporting period, the SDA added a project to the 2022 Capital Plan in Union City, bringing the total number to 20 projects. By the end of 2025, nearly half of these 20 projects in the 2022 Capital Plan will be delivered or have design-build contracts initiated. This includes projects that advanced during this reporting period through early site preparation activities, design activities, and the initial phase of a design-build contract.

This report will also detail the continued success of the Capital Maintenance and Emergent Grant Funding program, established in Fiscal Year 2022, and continued in three subsequent years. This funding allows school districts to tackle capital maintenance issues, such as outdated HVAC and electrical systems, before they evolve to the level of a potential health and safety concern.

SDA funding to New Jersey's Regular Operating Districts (RODs) also continued at a steady pace. At the end of March, SDA funding was supporting 771 active grant projects in 270 school districts, representing \$1.13 billion in total project costs and a State share of approximately \$495 million.

Work across all SDA programs is possible thanks to an SDA team comprised of dedicated staff and Board Members who remain flexible and adaptable in an ever-changing industry landscape. The SDA appreciates the continued support of its program stakeholders as we invest in school facility projects that support diverse learning needs and help to remedy disparities that exist within our educational infrastructure.

Warm regards,

Manuel Da Silva
Chief Executive Officer

Robert Nixon
Board Chairman



SCHOOL CONSTRUCTION THROUGHOUT THE STATE

SDA Celebrates the Cleveland Street Elementary School Project



Officials at the Cleveland Street Elementary School Opening Celebration

In February, SDA joined Orange Public Schools' leaders, students, and local officials, to celebrate the Cleveland Street Elementary School addition and renovation project, which opened to students in September 2024.

The \$51.7 million project included the construction of a new approximately 11,500 square-foot addition and renovations to the existing facility. The expanded school now accommodates approximately 350 students in grades kindergarten through seven, relieving overcrowding in the district and providing updated educational spaces.

The celebration included a performance from the Orange High School Mighty Marching Tornadoes Band and the Color Guard. Past and current educators spoke about the history of the school and the renewed hope for the years ahead in a facility that will enhance students' education. Following the event, attendees had an opportunity to tour the renovated facility, led by Cleveland Street School's young scholars. During



Front of Cleveland Street Elementary School

the tour, guests heard what students like best about the upgraded facility. Through continued collaboration with Orange Public Schools and community stakeholders, the

SDA delivered a facility built to support current educational needs and one that will also serve future generations of learners in a 21st century educational landscape.

The expanded Cleveland Street School now supports a modern, student-centered learning environment with upgraded classrooms, new multipurpose spaces, and improved infrastructure to meet current educational standards.

Capital Projects in Construction

At the end of the reporting period, the SDA had the Union City Esther Salas Academy in active building construction - a new grade seven to nine school. The new school is in the final stages of construction with interior partition wall finishes, mechanical/electrical/plumbing activities, as well as ceiling grid, lighting, and device installation ongoing.

The Esther Salas Academy will be an approximately 132,000 square-foot, six-story facility designed to educate approximately 930 students in seventh to ninth grades. In addition



to general classrooms and science labs, the school will include specialized educational spaces such as three art rooms, a stem/robotics lab, a hydroponics lab, a technology lab, vocal music room, a dance studio, a rooftop environmental science lab with an outdoor growing area, a media center, a gymnasium, and a cafetorium with a

stage/instrumental room.

Representing a State investment of approximately \$93.7 million, this new school will be the sixth capital project completed by the SDA in Union City since the inception of the school construction program. The project remains on schedule to open to students in September 2025.

Status of 2022 Capital Projects

Significant progress continued on projects in the 2022 Capital Plan Portfolio throughout the reporting period. A notable advancement was the SDA Board of Directors' approval of the addition of a project in Union City to the capital portfolio, bringing the total number to 20 projects.

At its December 2024 meeting, the SDA Board of Directors approved a resolution to allow the SDA to enter into an agreement with the Union City School District for the funding of the District's acquisition of the Mother Seton School from the Sts. Joseph and Michael Parish Community. Acquisition of this existing school would provide educational space for approximately 400 seats in grades seven to nine, thereby further addressing documented overcrowding in the District. The SDA's funding for the acquisition was contingent upon, among other things, the District reaching agreement on the terms of the purchase with the seller, Vatican approval of the transfer, NJDOE approval of the acquisition, and other required approvals. As of the end of the reporting period, no contract for the District's acquisition of the property and no agreement between the SDA and the District for the funding of the acquisition were entered into.

There was also significant procurement activity for other portfolio projects throughout the reporting period. The Board of Directors awarded a contract for design-build services for a new elementary school in Garfield. SDA also advertised a construction management procurement for Garfield, a design-build procurement for a new elementary school in Elizabeth, and early site preparation procurements for projects in West New York, Pleasantville, and Trenton.

The status of the 2022 Capital Portfolio at the end of the reporting period was:

- 2 were completed through an alternative project delivery approach,
- 1 project was in the design phase of the design-build contract,
- 1 project was in design-build procurement,
- 5 projects were in the schematic and bridging design phase with outside bridging design consultants,
- 1 project was in in-house program concept design,
- 2 projects were in program concept design with outside bridging design consultants, and
- 8 projects remain in the planning stage or are projects that will be phased in upon the completion of other projects in a district.

The status of all projects approved as part of the 2022 Capital Plan at the end of the reporting period are below.

Status of 2022 Capital Plan Projects					
District	Project	Grades	Max Capacity	Delivery Method	Advancement Status
Newark	Nelson Mandela E.S. (Existing building acq.)	PK-8	376	Alternative Delivery	Building acquisition complete.
New Brunswick	Middle School Annex (40 Van Dyke Ave.)	6-8, 9-12	859	Alternative Delivery	Building acquisition complete.
Bridgeton	H.S. Addition/Renovation	9-12	384	Design-build	Preliminary Charter approved Nov. 2022 Board.
Elizabeth	New ES (Battin Replacement)	PK-8	1,068	Design-build	Preliminary Charter approved Nov. 2022 Board. Early site preparation ongoing. Design-build advertisement 3/4/25.
Garfield	New ES (No. 5 Replacement)	PK-5	852	Design-build	Award for D-B approved at Dec. 2024 Board. Early site preparation complete. In design-phase of Design-build contract.
Paterson	New STEAM & STARS HS	9-12	1,532	Design-build	Preliminary Charter approved Jul. 2023 Board.
Trenton	ES at Dunn MS	K-6	837	Design-build	Preliminary Charter approved Jul. 2023 Board. ESP advertised 3/21/25/
Pleasantville	New Decatur Ave ES	PK-5	658	Design-build	Preliminary Charter approved Jan. 2024 Board. ESP advertised 3/13/25.
Camden	New High School (East Side HS Replacement)	9-12	941	Design-build	Planning Charter approved Feb. 2024 Board. ESP ongoing with District and CCIA.

District	Project	Grades	Max Capacity	Delivery Method	Advancement Status
Newark	New High School (University HS Replacement)	9-12	1,082	Design-build	Planning Charter approved Feb. 2024 Board.
Passaic City	New High School No. 12 Replacement	9-12	2,823	Design-build	Planning Charter approved Feb. 2024 Board.
West New York	New Middle School	6-8	876	Design-build	Planning Charter approved March 2024 Board. ESP advertised 1/10/25.
Bridgeton	6-8	6-8	TBD	Design-build	Project phased with advancement of High School Add/Reno project.
Bridgeton	PK, 6-8	PK, 6-8	TBD	Design-build	Project phased with advancement of High School Add/Reno project.
Jersey City	PK	PK	TBD	Design-build	NJDOE/District/SDA working group meetings ongoing
New Brunswick	MS Addition	6-8	TBD	Design-build	NJDOE/District/SDA working group meetings ongoing
Perth Amboy	K-5	K-5	TBD	Design-build	NJDOE/District/SDA working group meetings ongoing
Salem City	PK-8	PK-8	TBD	Design-build	NJDOE/District/SDA working group meetings ongoing
Garfield	K-5	K-5	TBD	Design-build	NJDOE/District/SDA working group meetings ongoing
Union City	Grade 7-9 School (former Mother Seton School)	7-9	400	Alternative Delivery	Funding Agreement memoranda approved Dec. 2024 Board.

New Construction, Design and Management Contracts

There were multiple contracts awarded during this reporting period to assist with the advancement of projects identified in the 2022 Capital Plan. The charts below list contract awards issued during this time.

Design-Build Contract				
District	Description	Contractor	Contract Date	Award Amount
Garfield	New Elementary School	Dobco, Inc.	1/24/25	\$58,250,000

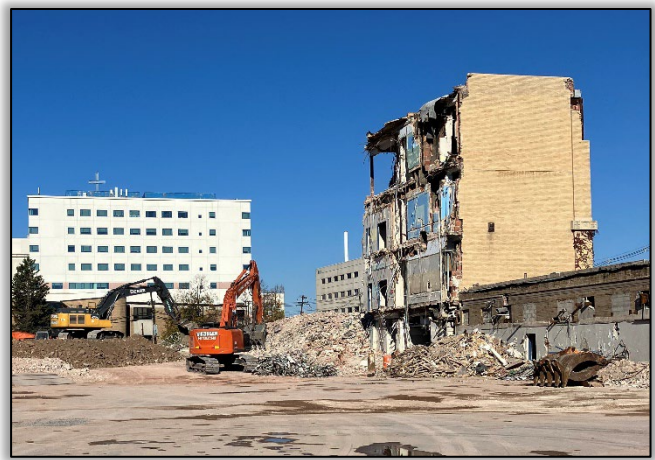
Design Consultant Contracts				
District	Description	Consultant	Contract Date	Award Amount
Pleasantville	New Elementary School	STV Architects	10/22/24	\$1,237,195
West New York	New Middle School	SSP Architectural Group, Inc.	11/07/24	\$1,444,516

Early Site Preparation Readies Sites for Construction

The SDA remains committed to the delivery of projects both on schedule and on budget. In its efforts to maximize a predictable outcome, the Authority utilizes a separate early site preparation contract in order to deliver a construction-ready site to a design-builder. During this reporting period, the SDA completed an early site package in Garfield and continued work on another in Elizabeth. In Garfield, the contractor completed the abatement and demolition of the existing 22,000 square-foot Woodrow Wilson School No. 5, and associated site work including site grading. In Elizabeth, demolition of the former 141,000 square-foot Joseph Battin School was completed and site work continued.



Site ready for construction of a new school in Garfield



Battin School Demolition in Elizabeth

Emergent Project Program

Historically, the SDA provided Emergent Project Program funding for important repair work at schools throughout the state so that students can learn in facilities that are free from building deficiencies such as leaking roofs and faulty boilers. Recently, funding for these types of projects primarily flows through the SDA's Capital Maintenance and Emergent Grant Program. The SDA continues to address conditions previously designated as emergent projects by the NJDOE due to potential health and safety concerns. These remaining emergent projects address conditions such as water infiltration and façade repairs.

At the end of the reporting period, the SDA was managing two emergent projects that will repair existing buildings, representing a State investment of more than \$6.8 million.

At the close of the reporting period, both of these projects were in construction. Below is the list of these projects.

SDA-Managed Emergent Projects			
District	School Name	Project Scope	Status
East Orange	Fresh Start Academy	Water Infiltration, Roof, Masonry	Construction
Newark	Technology H.S.	Structural Vault Repairs/Façade Repairs	Construction

In this reporting period, SDA funding also supports three emergent projects previously delegated for management by the local school district, which total \$14.2 million. When delegating projects, SDA executes a grant agreement with a local school district. The district is then responsible for procuring and managing consultants and contractors, with SDA maintaining oversight throughout the process.

District-Managed Emergent Projects			
District	School Name	Project Scope	Status
Burlington	Captain James Lawrence	Window and flooring replacement	Construction
Gloucester City	Gloucester City H.S.	Water infiltration, roof, masonry	Construction
Millville	Holly Heights E.S.	HVAC renovations	Construction

During the reporting period, SDA completed five SDA-managed emergent projects that totaled more than \$18 million in emergent repairs.

Completed SDA-Managed Emergent Projects		
District	School Name	Project Scope
Burlington	Samuel Smith E.S.	Window repair/replacement and partial roof replacement
Irvington	Grove Street School	Boiler replacement
Newark	Branch Brook E.S.	Building envelope repairs
Union City	Emerson M.S.	Roof replacement and stucco repairs
Union City	Union Hill M.S.	Roof replacement, stucco repairs, and chimney repairs

Capital Maintenance and Emergent Grant Funding

The New Jersey State FY 2025 budget once again included a direct appropriation to the SDA to provide funding for projects related to emergent and capital maintenance needs. In Fiscal Year 2025, the State Budget allocated \$50 million for projects in the 31 SDA Districts. This funding allows SDA Districts to invest in infrastructure projects that will make New Jersey's school facilities healthier and provide safer environments for students.

An NJDOE formula is used to determine funding amounts allocated to each of the 31 SDA school districts. The complete list of all districts and their allocations is available [here](#).

In order for school districts to receive their allocated funding, a district must submit to SDA a duly-executed certification and listing of eligible emergent and/or capital maintenance project(s). Below is a list of funding amounts disbursed by the end of the reporting period.

Capital Maintenance and Emergent Funding (Distributions through 3/31/2025)			
	Amount Available	Number of Districts Funded	Amount Distributed
Fiscal Year 2022	\$75 Million	560	\$74.3 Million
Fiscal Year 2023	\$75 Million	525	\$72.6 Million
Fiscal Year 2024	\$75 Million	450	\$70.8 Million
Fiscal Year 2025	\$50 Million	28	\$47.0 Million

The majority of projects funded through these grants address HVAC upgrades, building envelope repairs, life safety, and security needs. SDA also performs internal audits on a sampling of projects funded through the Fiscal Year Capital Maintenance and Emergent Grants.

ROD Grant Program

The SDA's Regular Operating District (ROD) grant program continues to benefit school facilities in hundreds of school districts throughout the State through funding that helps offset local expenses of school improvement projects. Touching every county in the State, the SDA's grant funding allows for essential building systems upgrades and building exterior upgrades.

Through this program, SDA provides grants of at least 40 percent of eligible project costs to local school districts to leverage local taxpayer resources that are used to fund these projects. For a school facilities project to be considered for ROD grant funding, the proposed scope of work must be 100 percent eligible for State support. Approved projects include work such as HVAC, electrical system, and building skin upgrades. Including vocational schools, of the more than \$4 billion in funding authorized for the ROD grant program, since 2001, \$3.46 billion has been expended to date.

SDA continued to execute grant agreements for ROD projects approved as part of a new round of grant funding made available when Governor Murphy signed Senate Bill 2944 into law as P.L.2022, c.18. During this reporting period, the SDA executed 48 grants with 27 school districts, totaling \$31.1 million in State investment and \$72.5 million in total project costs.

The ROD Grant program continues to benefit school districts, as demonstrated by the SDA's active portfolio of 771 grant projects in 270 school districts throughout the State (inclusive of recent grant offers and executions from the 2022 funding). At the end of the reporting period, these active projects totaled approximately \$495 million in State share, generating a total investment of more than \$1.13 billion in project costs when combined with the local share.

During the reporting period, the SDA disbursed 175 payments (for Emergent and Capital Maintenance/Emergent Project Grants) totaling over \$13.6 million, which included the close-out of eight projects impacting eight school districts.

School Facilities Projects Approved by NJDOE

From October 1, 2024 through March 31, 2025, the NJDOE issued approvals for 83 school facilities projects in RODs. None of these projects exceeded the Facilities Efficiency Standards (FES)¹.

The information included in the table below was provided by the New Jersey Department of Education, Office of School Facilities.

School Facilities Projects Approved by NJDOE				
October 1, 2024 – March 31, 2025				
	Total School Facilities Projects Approved	Required Educational Adequacy/FES Review	Projects Requiring Educational Adequacy/RES Review & Exceeding the FES	% of Projects Requiring Educational Adequacy/FES Review and Exceeding the FES
All Districts	150	83	0	0%
SDA Districts	0	0	0	0%
RODs	150	83	0	0%

The NJDOE approved two “Other Capital” projects for SDA Districts. Since these are outside of the SDA-managed funding process, they are not reflected in the table above. The NJDOE approved 151 “Other Capital” projects for RODs. These projects are also not reflected in the table above. An “Other Capital” project is a project that is either not eligible or not seeking State funding support.

¹ “Facilities efficiency standards” means the standards developed by the Commissioner of Education pursuant to subsection h. of section 4 of the Educational Facilities and Construction Financing Act: “The facilities efficiency standards developed by the commissioner are not construction design standards but rather represent the instructional spaces, specialized instructional areas, and administrative spaces that are determined by the commissioner to be educationally adequate to support the achievement of the core curriculum content standards including the provision of required programs in Abbott districts and early childhood education programs in the districts in which these programs are required by the State.”.

Metropolitan Statistical Comparison

The Authority's 2007 enabling legislation requires that twice per year the SDA management provide the Legislature a comparison of the SDA's capital project per square foot costs with those of projects constructed in the New York City and Philadelphia Metropolitan Statistical Comparison areas (MSA). This effort helps ensure that the SDA's construction costs are reasonable when compared to school construction costs in geographic areas with comparable building and economic conditions.

The data for the New York MSA is inclusive of New York City and its surrounding suburban counties including those located north and east of the city. The data also includes reported costs for facilities in counties in central and northern New Jersey.

Metropolitan Statistical Area (MSA) Totals				
Cost Per Square Foot Comparison at Bid				
Statistical Brief				
Source	Area	Elementary School	Middle School	High School
Dodge Data & Analytics <i>(Formerly McGraw-Hill)</i> Metropolitan Statistical Area (MSA) (Reports Dated Oct. 2024 – Mar. 2025)	Philadelphia	\$465	\$324	-
	New York	\$470	\$332	\$1,208
New York City School Construction Authority^ (Preliminary Fiscal 2025 Mayor's Management Report)	New York City	\$894		
SDA Managed Projects* (October 2024 – March 2025)	Statewide NJ	\$438	-	-

The table represents a statistical cross-section of data from numerous sources with report dates ranging 2024 - 2025. Costs are at time of bid.

^Numbers reflect the New York City Preliminary Fiscal 2025 Mayor's Management Report reported for Fiscal Year 2024. Construction bid price for school capacity projects per square foot.

**Cost at Bid for 1 SDA District Project (Garfield - New Elementary School (School #5 Replacement)) was \$438. Construction costs do not include costs for site construction. (For projects advanced via Design-Build Engagements, design fees included in the bid amount have been deducted to calculate the Construction Cost Per Square Foot).*

BENEFITTING NEW JERSEY BUSINESSES

Training Small Businesses to do Business with SDA



Graduates of the 2024 Contractor Training Program

The SDA's annual Contractor Training Program reflects the Authority's commitment to fostering expertise and growth within the construction industry, particularly for smaller construction-related businesses across the state. By providing the tools and training these firms need to succeed, SDA aims to ensure that New Jersey's school construction projects are delivered with the highest quality and efficiency while promoting economic growth statewide.

The Contractor Training Program is designed to provide small, minority, women, veteran, and disabled veteran-owned businesses with valuable knowledge on how to do business with the SDA and provide the tools necessary to successfully compete for school construction projects as well as contracts with other State agencies.

In 2024, 22 firms successfully completed the program, which took place in December. The participating firms expressed overwhelming satisfaction with the program and its ability to help them grow and improve their business.

SDA personnel as well as industry professionals from other New Jersey agencies instruct this two-day seminar program. SDA staff members have extensive knowledge on a wide range of construction-related topics, both specific to SDA projects and in general.



I recently attended a 2-day class at NJSDA, and it **exceeded my expectations.** The wealth of information provided was not only insightful but also applicable for both newcomers and experienced individuals looking to work with the NJSDA. **I highly recommend** this class to anyone looking to enhance their skills and knowledge within NJSDA and other government entities.”

- FEEDBACK FROM RECENT PROGRAM GRADUATE

Presenters from partner state agencies, including the New Jersey Economic Development Authority (EDA), the New Jersey Department of Labor and Workforce Development (DOL), and the New Jersey Department of Treasury, Division of Property Management and Construction (DPMC), provided participants with in-depth information on important topics, including DPMC classification, prevailing wage, and small business resources available through the state.

In addition to sessions discussing the various stages of an SDA construction project, participants benefited from a networking event held on the second day of the program. This networking session offered participants an opportunity to mingle with several larger contracting partners that have previously worked as a prime on SDA projects. Participants spoke with representatives of these companies and discussed potential opportunities to work together in the future.

To date, the SDA has trained more than 270 firms through its in-house Contractor Training Program. The Program has provided small, minority, women, veteran, and disabled veteran-owned business enterprises with the knowledge and skills necessary to compete for SDA projects and contribute to school construction initiatives across New Jersey.

The SDA intends to hold its annual offering of this training program in 2025.

Small Business Goals

The SDA is committed to ensuring that at least 25 percent of the total dollar value of all publicly advertised contracts it awards during a fiscal year go to small business enterprises (SBE). As such, the SDA requires consultants and prime contractors to make good-faith efforts to identify and hire available small business enterprise sub-consultants

and sub-contractors and to award at least 25 percent of the total contract value to them. In instances where the prime contractor is an SBE itself, the prime would count toward the 25 percent goal.

SDA prime contract award activity during this reporting period included the award of two design contracts and one design-build contract totaling \$72,181,711, with less than two percent of the total dollar value awarded going to primes with SBE classifications at the time of award. During the reporting period, prime contractors/consultants, subcontractors, and sub-consultants with SBE classifications received \$4,907,908 or 6.29% of total contract dollars (*Note: This includes contract dollars received during the reporting period by subcontractors associated with SDA prime contracts issued prior to October 1, 2024*). Historically, SDA contract engagements achieve or exceed the 25 percent goal over the course of the entirety of the engagements as awarded jobs are fully subcontracted or “bought out.” The design-build project included in the total above is currently in the design phase of the design-build contract. The SDA expects the SBE award percentage to increase by the end of the project to achieve the 25 percent goal as the prime contractor hires additional sub-contractors/sub-consultants through the lifecycle of the construction project.

The SDA also compiles information on the number of school construction contracts awarded by the SDA to women, minority, veteran, and disabled veteran-owned contractors. This reporting period, minority-owned businesses received \$155,000, or 1.36 percent, of the total SDA construction contracts awarded. Women-owned businesses received \$409,161, or 3.58 percent, of the total SDA construction contracts awarded. There were no awards to veteran or disabled veteran-owned businesses during the reporting period.

Minority/Female Workforce Hours

Through payroll certification, SDA tracks the number of work hours by trade, broken down by minority and female workers. The chart below exhibits the number of work hours on active construction sites and the percentage breakdown by women and minorities. During this reporting period, the SDA logged more than 87,000 work-hours across all trades. These numbers represent the work hours of 1,126 employees, inclusive

of 383 minority employees and 4 female employees. Of the total work-hours across all trades, the minority and female workforce performed more than 36 percent.

Number of Minority/Female Work-Hours by Trade (October 1, 2024 - March 31, 2025)					
Trade	Total Work-Hours	Minority Work-Hours	Minority Work-Hours Percentage	Female Work-Hours	Female Work-Hours Percentage
Asbestos Removal/Treatment	288	276	95.83%	0	0%
Bricklayer, Stone Mason	13,138	6,739	51.29%	0	0%
Carpenter	9,974	3,599	36.08%	520	5.21%
Cement Mason	48	13	27.08%	0	0%
Electrician	13,166	5,437	41.3%	0	0%
Elevator Constructor	700	0	0%	0	0%
Glazier	2,165	0	0%	0	0%
Heat and Frost Insulator	4,086	196	4.80%	0	0%
Iron Worker	528	0	0%	0	0%
Laborer	20,548	10,422	50.72%	0	0%
Operating Engineer	2,027	48	2.37%	0	0%
Painter	1,396	288	20.63%	0	0%
Pipefitter	1,604	158	9.85%	0	0%
Plasterer	168	80	47.62%	0	0%
Plumber	5,354	1,212	22.64%	0	0%
Roofer	2,009	356	17.72%	0	0%
Sheet Metal Worker	8,726	1,528	17.51%	0	0%
Sprinkler Fitter	1,688	1,216	72.04%	0	0%
TOTALS	87,613	31,568	36.03%	520	.006%

Supporting Construction Jobs

New Jersey's school construction program provides significant benefits for both students and the construction industry. While new schools strengthen educational opportunities for generations of students, construction projects also generate thousands of jobs for the skilled trades.

For the one capital project (Union City Esther Salas Academy) in construction at the end of the reporting period, as well as the ongoing demolition activities for one capital project (Elizabeth Joseph Battin Elementary School replacement), the more than \$99.5 million

(total project costs) investment in active construction/demolition contracts represents the creation and/or support of more than 862 job-years throughout the project lifecycle.

In addition, the 771 active ROD Grants ongoing throughout the State, with total project costs of more than \$1.13 billion, represent 9,963 job-years for the construction workforce.

The SDA expects the State's school construction program to have exponentially more impact on the State's construction workforce in the coming years as additional capital construction projects advance.

SDA FINANCES

Since the inception of the State's construction program, the New Jersey State Legislature has authorized a total of \$14.825 billion in bond and appropriations funding for SDA projects (\$10.8 billion for SDA Districts, and \$4.025 billion for RODs and vocational schools). Since the program's inception through the end of the reporting period (March 31, 2025), the amount of bonds issued to fund the school construction program is approximately \$11.85 billion. No bonds were issued during the reporting period, and no new bond issuances are expected in the foreseeable future due to recent funding allocated to the Authority through various annual budget and appropriations bills. As of March 31, 2025, SDA had approximately \$618.6 million in cash on hand.

The Authority's most recent annual financial statements, audited by Ernst & Young LLP, can be found on the SDA's website at:

<https://www.njsda.gov/Public/AnnualAndOtherReports>.

The SDA remains a staunch steward of taxpayer funds and as such, when necessary, the SDA pursues opportunities to recover funds to ensure fiscal responsibility. During the reporting period, the SDA recovered a total of \$804,354.04 in reimbursement of costs incurred for environmental remediation on real properties it acquired through eminent domain for the now-completed and occupied Jersey City ECC 13 and Newark Oliver Street Elementary School projects. The SDA also resolved \$1,414,991.60 in contractor claims for a total settlement amount of \$386,561.13. These settlements equal 27% of the original amounts claimed.

COMMUNITY OUTREACH

The Authority consistently makes proactive outreach to our stakeholder community to encourage collaboration and increase public awareness of the expertise of SDA's staff and its efforts to build state-of-the-art schools for thousands of schoolchildren in New Jersey's most underserved communities. During this reporting period, SDA continued to prioritize meaningful engagement with communities, educational stakeholders, and industry professionals through strategic outreach and participation in key events across the state.

In October 2024, SDA participated in the *New Jersey School Boards Association Annual Workshop* in Atlantic City, the largest training and information-sharing event for school officials in the state. As part of its ongoing relationship with industry partners, SDA CEO Manuel Da Silva presented at the *New Jersey Alliance for Action's Construction Forecast Seminar* in November 2024. The SDA participated in a *Community Meeting* hosted by the City of Passaic and the Passaic School District to provide upcoming project information and solicit feedback regarding planned school construction. In March 2025, SDA CEO Manuel Da Silva celebrated *Read Across America* with a visit to Kennedy Elementary School in Harrison, where he read to some of New Jersey's youngest learners. Emphasizing the importance of literacy and lifelong learning, this event highlighted the SDA's continued investment in safe environments that support academic growth. CEO Da Silva's participation underscored the Authority's direct connection with the students and communities its projects serve.



Read Across America at Kennedy Elementary School