



For More Information:

Edye Maier – (609) 292-6246

September 27, 2012

The Christie Administration Advances New Phillipsburg High School Project with Advertisement for Construction

Advertisement Brings Long-Awaited School One Step Closer to Completion

TRENTON, NJ – The Christie Administration continued to advance school construction projects throughout the State with the announcement of the New Jersey Schools Development Authority's (SDA) advertisement of a \$87 million dollar contract for the construction of a new high school in Phillipsburg.

“With today’s construction advertisement, Phillipsburg students are one step closer to having a new learning environment to foster their education,” said SDA CEO Marc Larkins. “Given our ongoing partnership with the Phillipsburg school district and the New Jersey Department of Education, we are confident that the State is advancing the appropriate project to address the overcrowding in the district while maintaining the most prudent use of state resources.”

The construction of this highly anticipated school will result in a 330,021 square foot facility to accommodate 1,846 students in grades nine to twelve that will be located on a 122 acre hilltop site in Lopatcong, NJ. The building includes 50 general classrooms, six special education classrooms, 12 Small Group Instruction rooms, three Health Classrooms, 12 science related classrooms, three business labs, three computer labs, vocal and instrument music rooms, a media center, an auditorium, a cafeteria and a gymnasium. The High School will also contain Vocational spaces that will offer instruction in areas including agriculture, materials, child development, foods, textiles, electronics, and energy/transportation. The school is anticipated for completion in August 2016.

“The Phillipsburg School District and the New Jersey Schools Development Authority have collaboratively worked together on the design of The New Phillipsburg High School,” said Phillipsburg Superintendent George Chando. “Once completed, the students who attend Phillipsburg High School will be housed in an educational facility that will enhance the ability of the teaching staff to deliver the quality educational program we offer our students as they embark on their career pathways in the 21st century.”

The \$87,097,636 construction cost estimate for the Phillipsburg High School project is one of the largest construction projects in NJ this year. The SDA previously completed site work including the removal of large rock outcroppings, grading of soil to within one foot of final building elevation, construction of runoff prevention system and athletic fields. DIGroup Architecture of New Brunswick, NJ is the architect for the project. Heery International of Newark, NJ is the construction manager.

The High School will be the second new facility built in Phillipsburg by the SDA. The SDA completed construction of the Phillipsburg Early Childhood Center in 2006. This project was selected for advancement as part of the 2012 Capital Project Portfolio announced by the Governor in February 2012.

The SDA’s current portfolio of active projects is valued at over \$2 billion – including the 2011 and 2012 Capital Project portfolios (more than \$1 billion), additional projects in construction (\$86 million), emergent projects (\$43 million) and Regular Operating District grants (\$743 million state share).

More information on this advertisement can be found on the SDA website at:
http://www.njsda.gov/Business/CV/Opportunities_Awards.html.

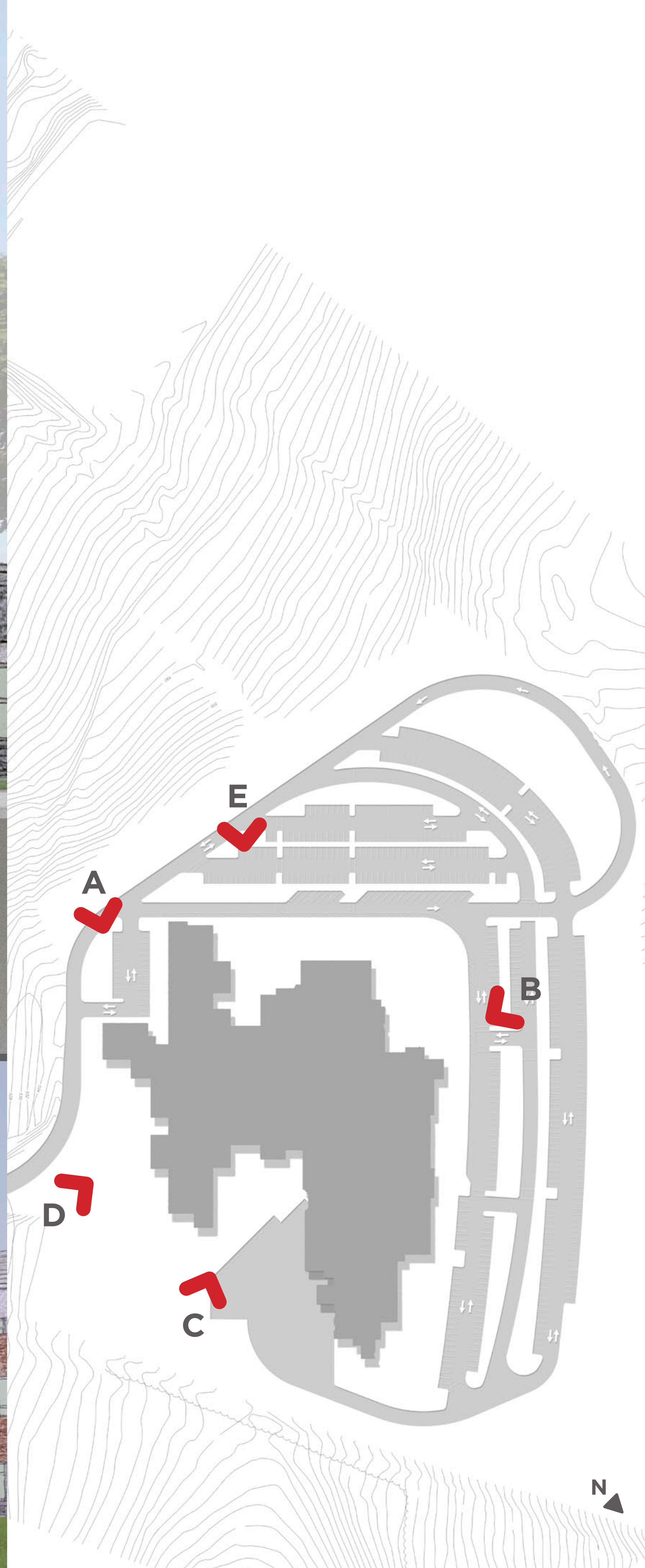
###



A



D



PHILLIPSBURG HIGH SCHOOL



STUDENT SERVICES

MEDIA SERVICES

FACULTY

ASSEMBLY / LARGE GROUP

SCIENCE

HEALTH / PHYSICAL EDUCATION

GENERAL CLASSROOM

HEALTH SERVICES

ADMINISTRATION

SUPPORT SPACES

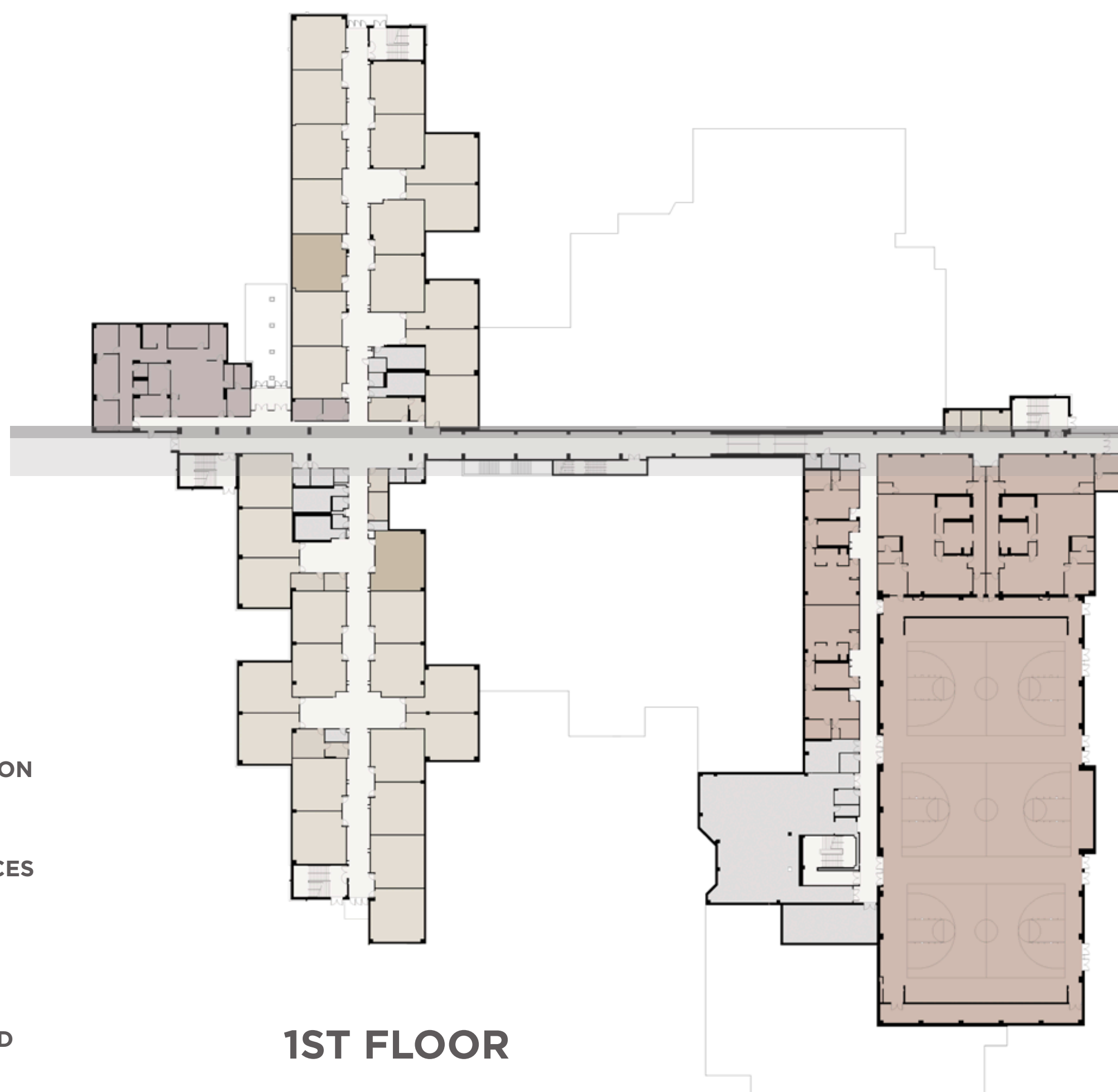
VISUAL / PERFORMING ARTS

SCHOOL BASED YOUTH SERVICES

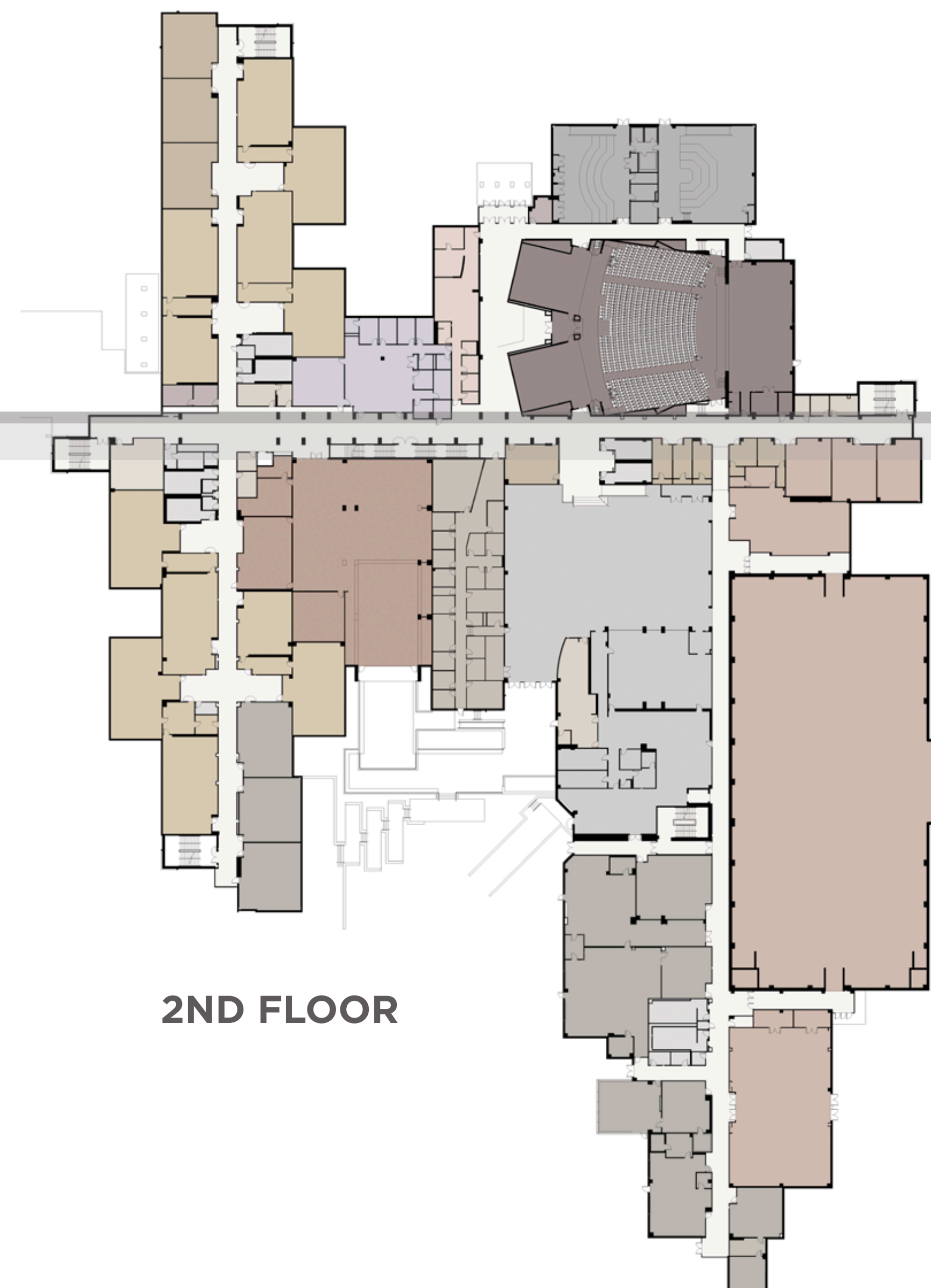
CAREER / VOCATIONAL

MISCELLANEOUS

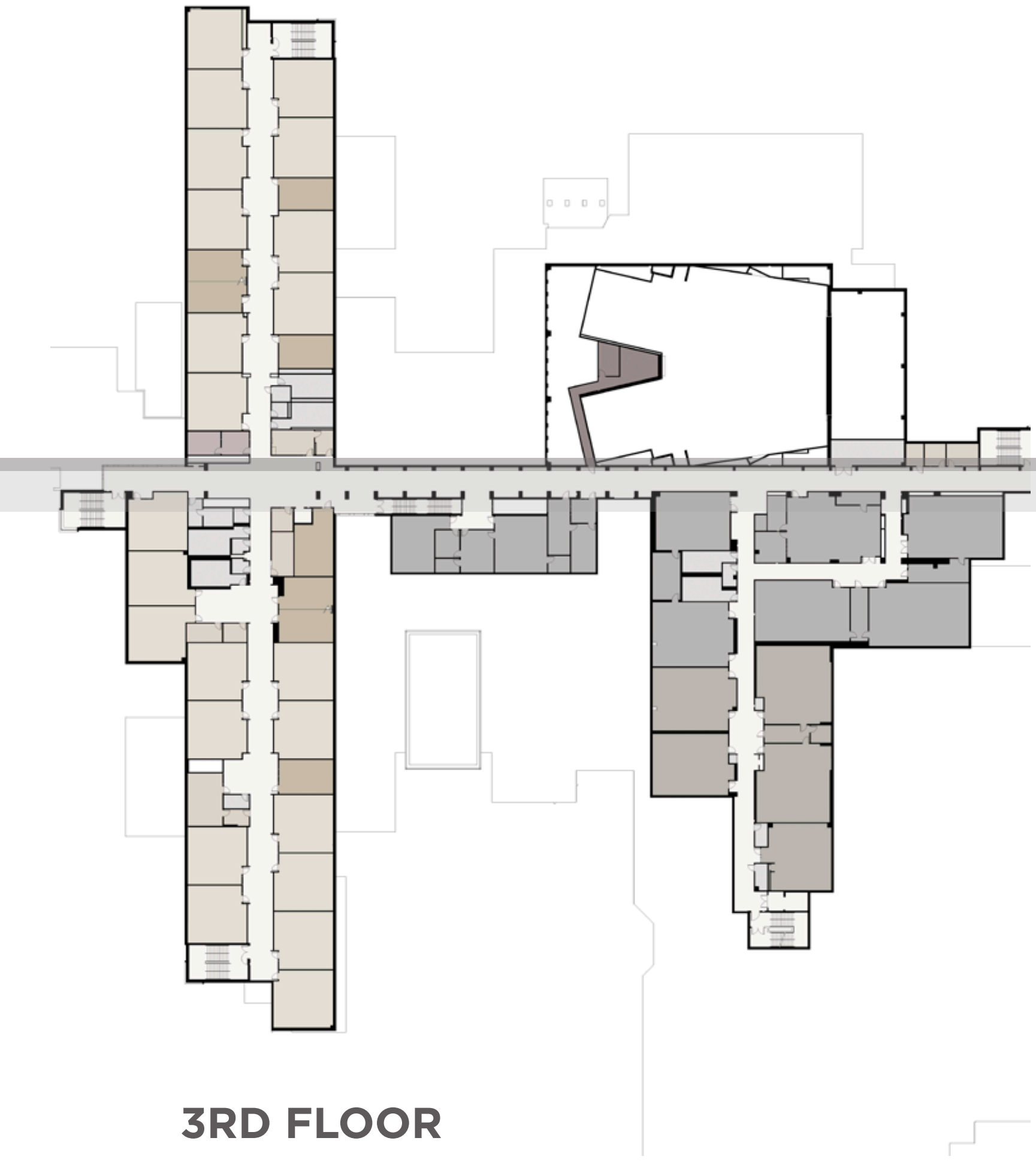
FOOD SERVICES



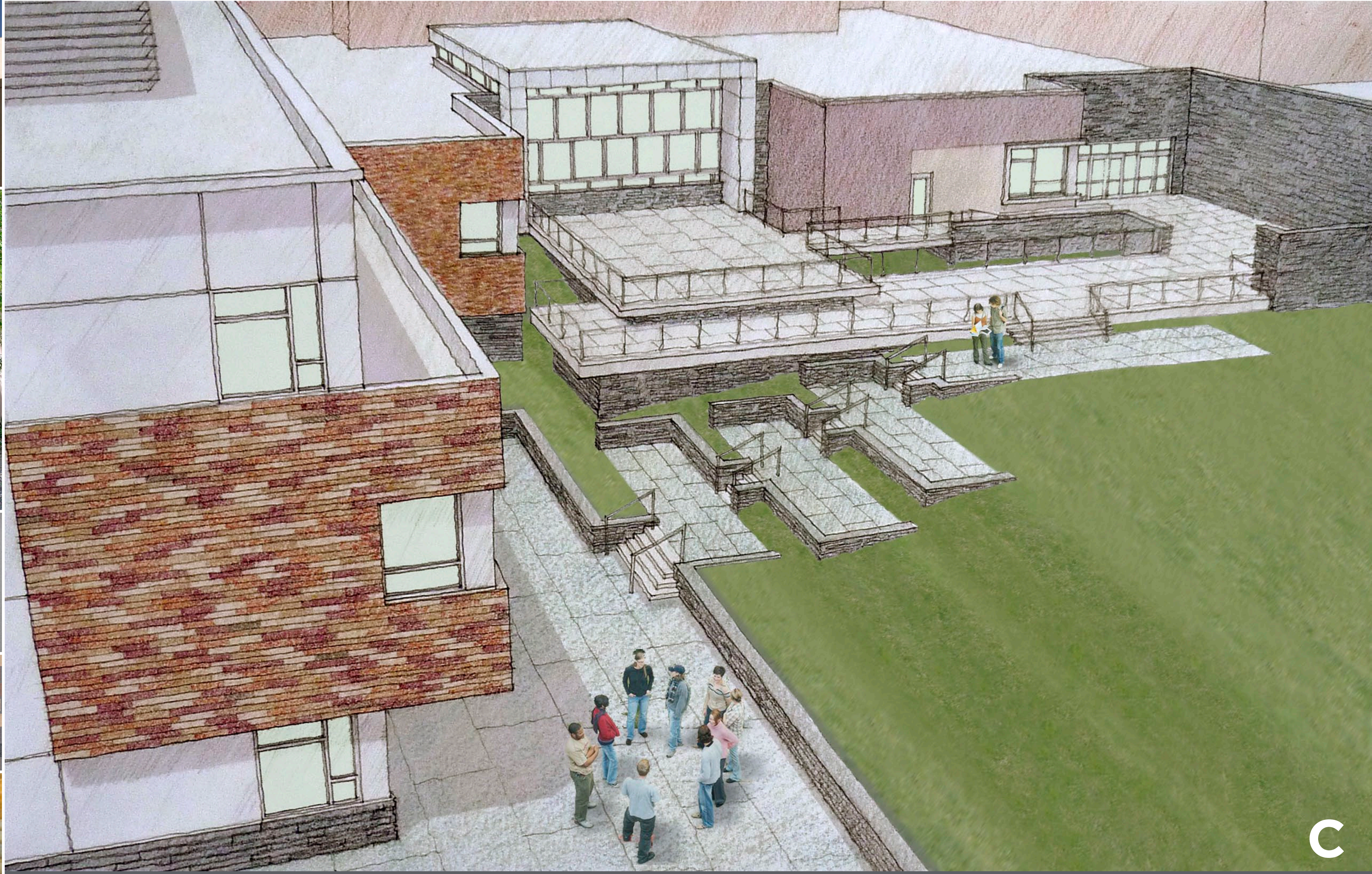
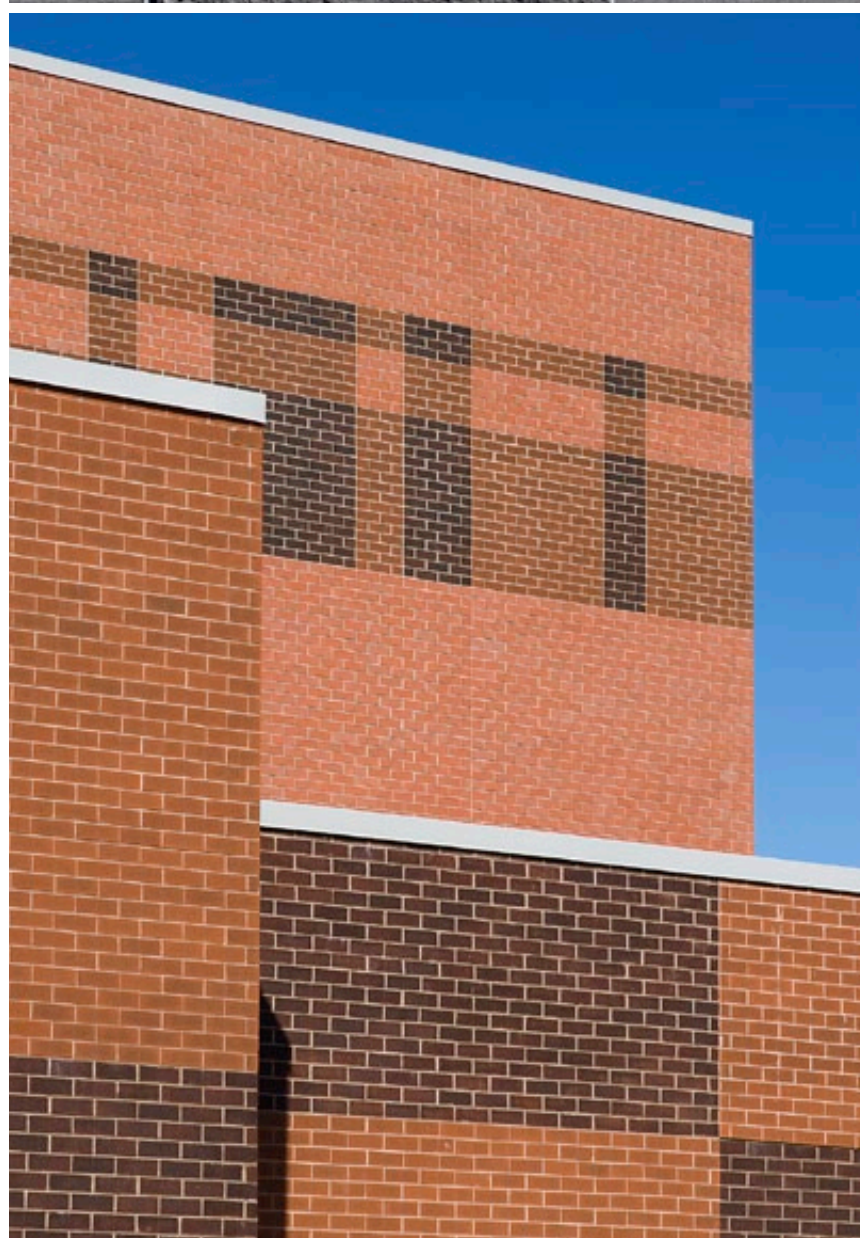
1ST FLOOR



2ND FLOOR



3RD FLOOR



PHILLIPSBURG HIGH SCHOOL